

## First Place Winner of PA State Life Work Challenge Award



From left to right are: Tonya Struble, SUN Tech Paralegator, Terry Boonie, SUN ATI Computer Networking and Technology Instructor, Wendy Chalmers, SUN ATIS Teacher, Tina Hans, SUN Tech Computer Networking and Technology Student (award recipient), Rep. Fred Keller, Dennis Hain, Director SUN ATI.

The PA Association of Career & Technical Education Special Populations (PACTESP) presented Tina Hans, Lewisburg, with the First Place Award for the Life Work Challenge Award. The award is present-

ed to three career and technical education students in the state who have demonstrated growth and preparation to achieve their goals related to their future careers. A nominating committee reviews applications for the award and makes decisions based on evidence of achievement and letters of recommendations. Tina was nominated by Wendy Chalmers, SUN Area Technical Institute.

Tina, enrolled in the Computer Networking & Technology Program at SUN Area Technical Institute and a Lewisburg High School Senior,



was nominated for the award because of her ability to reach past obstacles to obtain her goals related to career development. Tina was unable to attend the presentation of the award, but was recognized by Wendy Chalmers from SUN Area Technical Institute, Terry Boonie, her Computer Networking and Technology Instructor at SUN ATI, and Tonya Struble, from SUN ATI. The presentation was attended by individuals from Career & Technical Education

across the state in a presentation at a luncheon at the Hershey Hotel. Tina was awarded a monetary award, a citation from State Senator, Gene Yaw and an award plaque. At a later date, Rep. Fred Keller presented Tina with a Citation at SUN ATI.

Tina was recognized for her ability to overcome multiple obstacles that may have prevented others from setting and reaching towards goals. She was commended for her commitment to improving her skills in preparation for her future goals. She is a varsity member of the Lewisburg Area High School Bowling team. She has participated in the Make-A-Wish program, was involved in the Prom Committee during her Junior Year, and serves as a student representative on the Occupational Advisory Committee for the Resource Department at SUN Tech. Her teachers described her as an excellent self-advocate; asking for assistance when she needs it but working hard to become as independent in achieving her goals as possible. Tina's teachers comment that she is dependable, determined, has excellent attendance, is a hard worker, and takes pride in her work. Tina is currently dual enrolled at Penn College of Technology and will earn 3 credits towards her college education at the end of this year. Tina is on schedule to earn her Certificate of Completion

from the Computer Networking & Technology Program at SUN Tech in May 2013. She has earned a 95% average in this program to date. She plans to enroll at Penn College of Technology in the fall to pursue a degree in information technology.

PACTESP, first formed in 1977 under the name of the Pennsylvania Association of Vocational Education Special Needs Personnel (PAVESNP), is a professional organization made up of individuals who have an interest in supporting career and technical education for students with special needs. PACTESP also provided yearly awards to students and professionals who support students in Career & Technical Education as well as sponsoring a Mid-Winter Conference. Past-President of PACTESP is

Wendy Chalmers, Learning Support Teacher at SUN Area Technical Institute. More information is available at [www.pactesp.org](http://www.pactesp.org).

SUN Area Technical Institute serves 5 sending districts in a three county area (Snyder, Union, Northumberland), Selingsgrove, Middle-West Lewisburg, Mifflinburg, and Shikellamy. Students may opt to participate in one of 19 programs offered at SUN during their senior year in high school in order to prepare for their post-school outcomes. Students are prepared to enter the world of work or go on to further education. Visit [www.sun-tech.org](http://www.sun-tech.org).

For more information, contact Wendy Chalmers, President, PACTESP [wchalmers@sun-tech.org](mailto:wchalmers@sun-tech.org), [poeticgarden@hotmail.com](mailto:poeticgarden@hotmail.com), 570-966-1031 ext. 301.

## Library Accepting Donations For Annual Sale

The West End Library will be holding its annual book and yard sale from 8 a.m. to 3 p.m. on Friday, May 24 and Saturday, May 25. The book sale will be held at the library and the yard sale will be held at the Hartley Township Community Center.

Donations of books, CDs and DVDs, in good condition, can be dropped off at the library May 1 through May 18. The library cannot accept donations of text books, encyclopedias, Reader's Digest condensed books, cassette tapes, video cassettes or materials in unacceptable condition.

Books will be sold for \$20 for a full bag and \$10 for a half bag. Books can also be

purchased individually.

Yard sale items will be accepted from 2 to 6 p.m. Wednesday, May 22 and Thursday, May 23 at the Hartley Township Community Center. Clothing will not be accepted. All items will be priced individually.

All funds raised will be used at the West End Library to continue providing materials and services for the community to enjoy.

Volunteers are needed to assist with accepting donations, as well as during the sale. Those interested in volunteer, or for additional information, contact Susan Epley, library director, at 570-922-4773.

**HARDI** **0% FINANCING AVAILABLE**

**RANGER Series**

- 550 Gallon Tank & Frame
- Boom Hydraulics
- Eagle 45' or 60' Booms
- HC Adjustable Axle 60" to 90"

**HOOVER TRACTOR** **855-290-8136**  
11715 OLD TURNPIKE ROAD, MIFFLINBURG, PA

**ATTORNEY**

**MICHAEL D. SUDERS**  
"Your First Call"  
**966-3360**

**45** **Roads are OPEN to**

**COUNTRY FARM & HOME**  
Gift and Garden Center  
"The Gardener's Favorite Destination"

- Rt 45, traveling West from Lewisburg...
- Rt 45, traveling East from St College...
- Rt 104, traveling north from Middleburg...

Turn right on Rt 104, 1 block turn Left on Market St, stay on Market until the end, Left on Mable St 1 Block, Right at traffic light back on Rt 45 continue on to Country Farm & Home

Just before Rt 45, turn Right on Market Street, stay on Market until the end, Left on Mable St 1 Block, Right at traffic light back on Rt 45 continue on to Country Farm & Home

**IT'S WORTH THE TRIP!**  
**DETOUR DOLLARS**

**COUNTRY FARM & HOME**  
Gift and Garden Center

\$4.50 OFF your purchases of \$45.00 or more  
Regular Priced Merchandise  
May not be used on Landscaping, Collectibles, Pet Food or Bird Seed  
Expires May 31, 2013

7801 Old Turnpike Road, Mifflinburg, PA 17844  
Phone: 570-966-4030  
[www.CountryFarmAndHome.net](http://www.CountryFarmAndHome.net)

**Hours: Extended Spring Hours:**  
Apr. 15 - May 26,  
Mon-Fri 8-6, Sat 8-5, Sun 12-4

**Engle's**  
Farm, Greenhouses & Garden Center  
(570) 837-0432

**It's time to plant from our wide selection of Trees & Shrubs**

**Flowering Pears & Cherries In Bloom**  
**1,000's To Choose From**  
**Over 100 Dogwoods To Choose From**

Our Famous Starter Perennials are Back! <b>32 Pots for \$35.00 or \$1.89 each</b>	• Strawberry Plants • Asparagus Plants • Blueberry Bushes • Grape Vines • Onion Sets • Seed Potatoes	Early Vegetable Plants <b>POND PLANTS</b> <b>HERBS</b>
--	---	--

171 Greenhouse Road, 1 1/2 Miles W. of Middleburg, Rt. 522 South  
Gift Certificates Available  
[www.englesgreenhouse.com](http://www.englesgreenhouse.com)

HOURS: Mon. - Sat. 9-5  
Closed Sunday

**MOUNTAIN VIEW GREENHOUSES**

922-0497 • 1265 Cold Run Rd. • Millmont  
(Rt. 45 W. to Hartleton, turn right on Cold Run Rd. about 1 mile on left)

**PLANT NOW!**

Great Selection • Asparagus & Strawberry Plants • Early Vegetable- Onion Sets • Hanging Baskets • Geraniums • Annuals • Perennials • Great Prices

**Mushroom Soil & Bark Mulch**  
Hours: Mon to Fri 8-8 • Sat 8-5 • Closed Sunday

**HOOVER'S BERNINA SEWING**

Stop in and see the beautiful...  
**Floral & Postage Stamp 350B Machines**

It comes with a quilting package that includes the walking foot, 1/4" seam foot and the #29 quilting foot.

A limited quantity were made, we received one shipment and when they are gone, they are gone!

**OUR PRICE \$1,099**  
SUGGESTED RETAIL \$1,799

2282 Beaver Road Off Route 104 (2 Mile South Of Mifflinburg)  
Mon., Wed, Thurs. 9-4 / Tues. & Fri. 9-8 / Sat. 9-3 / Closed Sun. **570.966.3822**

**BROOKSIDE BIKES**

600 Conley Rd., Mifflinburg, PA 17844  
**(570) 966-3879**

Hours: Mon., Tues., Thurs., Fri. 8-8  
Sat. 8-3, Wed. & Sunday Closed

IN MIFFLINBURG: Turn North at Mifflinburg Pharmacy onto Forest Hill Road, 3 Miles to Conley Road (turn right), 1 mile to Bike Shop.

**Sales & Service**  
Authorized Raleigh & Fuji Dealer

**PROM TUXEDO SALE**

15% off any tuxedo rental!  
EXPIRES 4/27/13  
Offer applies to new orders only.

**Tuxes - N - Tunes**

213 E. Chestnut Street, Mifflinburg  
570-966-2995

**Brookside Acres Greenhouses**

966-3879

Lots of Hanging Baskets

Seed Potatoes • Onion Sets • Strawberry Plants • Early Vegetable plants • Water Plants  
Petunias • Blooming Pansies • Perennials  
Mushroom Soil • Bark Mulch  
OPEN: Mon. - Fri. 8-8; Sat. 8-5; CLOSED Sun.

**VanScyoc's**

**VanScyoc's Spraying Services**  
Over 14 Years Experience - Owner Operated

**HIGH PRESSURE WASHING**

Commercial • Residential • Agricultural  
Patios & Decks Cleaned • Houses • Commercial Buildings  
Licensed • Fully Insured  
Satisfaction Guaranteed

"If It's Dirty We'll Wash It!" **(570) 837-9457**

**Reiff's**

Off Rt. 45 at Vicksburg  
**966-2451**

Hours: Mon. - Sat. 8am-5pm;  
Closed Sundays  
Railroad Ties!

**HIGHEST QUALITY GRASS SEED-WEED/FEED ETC. GREENHOUSE NURSERY**

Garden Seeds  
Seed Potatoes  
Fruit Trees  
Strawberry Plants  
Asparagus  
Blueberries  
Raspberries

Appalachian Redbuds  
Hugh Lacy Leaf  
Japanese Maples:  
Sale \$99.99  
Alaskan Cedars \$99.99  
Weeping Cherries

New Nursery Shipment Arriving This Week!  
**10,000 Perennials To Choose From**



# Community Calendar

**Club 39**  
Club 39 meets every Wednesday, from 2 p.m. - 4 p.m. in the Government Building, at 343 Chestnut St., in Mifflinburg. May 1: Business-Program-Fred Keller. May 8: Bingo. May 9: Breakfast Old Turnpike Restaurant 8:30 a.m. May 15: Program- Harry Apfelbaum. May 22: Bingo. May 29: Birthdays-Fun and Games. May 30: Dinner Mifflinburg Hotel 5 p.m.

**Fishing Derby**  
Mifflinburg American Legion Post 410 is hosting a Fishing Derby at Buffalo Creek, at Haney Park, on 8th Street, in Mifflinburg, for children 12 and under on April 27 & 28. Hot dogs, fries and soda from 8 a.m. to 5 p.m.

**Pancake Breakfast**  
The Kiwanis Club of Lewisburg is preparing for its annual pancake breakfast on April 27, from 7-10 a.m. at the Lewisburg Club, at 131 Market Street, in Lewisburg. For tickets call 524-9669.

**Chicken Barbecue**  
Christ's United Lutheran Church (Four Bell Church), at 13765 Old Turnpike Road, in Millmont, is hosting a Chicken Barbecue on Saturday, April 27, from 3-6:30 p.m. Tickets can be purchased at the church by calling 922-1860 or 966-4091. The church is located along Route 45, west of Mifflinburg.

**Ham Dinner**  
An All You Can Eat Ham Dinner is being held on April 27, from 4 p.m. - 8 p.m. at the Hartley Township Recreation Center, in Laurelton, next to the library and ball field hosted by the Union County West End Fire Co.

**Applebee's Flapjack Fundraiser Breakfast**  
The Kingdom Kidz Inc. invites the public to join them for an Applebee's Flapjack Fundraiser Breakfast on Saturday, April 27, from 8 a.m. - 10 a.m. at Applebee's, at 300 International Drive, in Lewisburg. The proceeds will help the Kingdom Kidz with their expenses for a mission trip to McColl, SC in June. Tickets may be purchased from any team member or at the door that morning. For further information contact Donna Bridge, President & CEO, or visit their website at www.hiskingdomkidz.org.

**Love & Respect Marriage Conference**  
Buffalo Valley Church of the Brethren, 46 Brethren Church Road, Mifflinburg, is hosting a Love & Respect Marriage Conference on Friday, April 26, from 6:45 p.m. - 10:15 p.m. and Saturday, April 27, from 8:45 a.m. - 1:45 p.m. Register by calling the church at 966-1183 or register online at churchoffice@bvccb.org or directly at www.loveandrespect.com by April 15. The church is located on Route 45 about 1.5 miles west of Mifflinburg.

**Roast Pork Supper**  
A Roast Pork Supper will be held on Saturday, April 27, from 4-7 p.m. at Trinity Lutheran Church of Cowan. The church is located at 2599 Church Rd., just south of Rt. 192, 7 miles west of Lewisburg. Take-outs available.

**West End Senior Center**  
Do you or do you know someone who has diabetes and has questions/concerns about their health? Karen Simeone, RN and Diabetes expert from Evangelical Hospital will be at the West End Senior Action Center, at 1724 State Route 235, in Laurelton. The program will be held on Tuesday, April 30, at 10:30 a.m. and is free to the public. Any questions call 922-4848 Tuesday or Thursday.

**Rummage Sale**  
New Berlin United Church of Christ, on Market and Vine Streets, in New Berlin, is hosting a rummage sale on Friday, May 3, from 8 a.m. - 3 p.m. and Saturday, May 4, from 8 a.m. - 2 p.m.

**Mommy's Night Out**  
It's Mommy's Night Out! In honor of Mother's Day, Fero Winery (Lewisburg) has teamed up with consultants from all of your favorite home party companies to treat you with a night of wine, fun and shopping on Saturday May 4, from 6-9 p.m. Enjoy a tasting or two from Fero Winery's award winning wines, treat yourself with a little shopping and enter to win amazing raffle items! This event is free and open to the public.

**Annual 5K Race for Women's Health**  
The 14th Annual 5K Race for Women's Health will be held Saturday, April 27, at Lewisburg High School, corner of Market Street and Route 15, Lewisburg, at 8:30 a.m. Benefiting Family Planning and WIC Program centers in Snyder, Union, Northumberland, Mifflin, and Juniata Counties, monies raised at the event will be used to offset decreases in government funding and escalating operating costs associated with running a multi-site Family Planning and WIC (Women, Infants, and Children nutritional program) agency. Registration for the race opens at 7:00 a.m. However, Family Planning is encouraging preregistration by offering a discounted entry fee. Registration is available online at www.parunners.com or forms can be requested by contacting Peggy Moser at (570) 523-3462 or peggygm@familyplanningplus.org or Shiloh Erdley at (570) 854-0972 or shiloherdley@yahoo.com.

**Ham & Dandelion Dinner**  
Mifflinburg Legion will be hosting a Ham & Dandelion Dinner on April 27, from 5-8 p.m.

**Fishing Derby**  
The Mifflinburg Legion will be hosting their annual Fishing Derby on April 27 & 28, from 8 a.m.-5 p.m. at Haney Park. Ages 12 and under and open to the public.

**Rummage, Soup & Bake Sale**  
A rummage, soup & bake sale will be held at Dreisbach Church on Thursday, May 2 & Friday, May 3, from 9 a.m.-5p.m. & Saturday, May 4, from 9 a.m.-12 noon. Saturday is \$2 a bag day. The church is located 5 miles West of Lewisburg off Route 45 near Vicksburg on Dreisbach Road.

**Look Good Feel Better**  
Look and feel your best at a special Mother's Day "Look Good Feel Better" session on Monday, May 6, 2013, from 10 a.m. - 12 p.m., at Evangelical Community Hospital, Lewisburg. Pre-registration is required. Please call 1-800-227-2345 to register. Women in need of a free, brand-new wig or head covering from the American Cancer Society should also call 1-800-227-2345.

**Grove's Mill Tour**  
Grove's Mill, a commercial water-powered gristmill, which has operated continuously since 1783, will open its doors for a free tour on Sunday, April 28, at 12:30 p.m. The tour of this historic site is part of the Merrill W. Linn Land & Waterways Conservancy's 10th annual Earth Month Celebration, a series of free, family-oriented events. Grove's Mill is located on Buffalo Creek between Mazeppa and Lewisburg at 3013 Hoffa Mill Road. From Lewisburg, take Route 192 west about 3 miles to Hoffa Mill Road. Turn north on Hoffa Mill Road and drive 0.5 miles, crossing Buffalo Creek. The mill is on the left. For further information call 524-8666 or visit www.linnconservancy.org.

**Speaker**  
On April 29, the Lewisburg Sunset Rotary Club will have a world-class speaker on drones and targeted killing. To answer these questions, Gabor Rona, International Legal Director of Human Rights First, will speak at the Lewisburg Sunset Rotary Club on Monday, April 29 from 6-7 PM. The event is free and open to the public. The event will be at the regular Monday meeting of the Lewisburg Sunset Rotary Club at Puirseil's Irish Pub, 17 South Sixth Street Lewisburg, PA, April 29th 6-7 PM. Refreshments will be served. The event is free but space is limited so please RSVP to jkador@gmail.com by April 28 to ensure a seat.

**AYCE Purple Pancakes**  
Angels of Hope Relay for Life Team will host an AYCE Purple pancakes on Saturday, April 27, from 8-10 a.m., at UPC of Lewisburg Social Hall, 2822 Buffalo Road, Lewisburg. For more information, call (570) 428-5627.

**Annual Pancake Breakfast**  
The Lewisburg Kiwanis Club is continuing the "proceeds sharing program" associated with their annual pancake breakfast that will be held on April 27th from 7 to 10 a.m. at the Lewisburg Club, at 131 Market St. Children five and under get a free breakfast. All ticket purchases are made at the door.

**Global Youth Service Day**  
Kelsey's Dream is participating in Global Youth Service Day this Sunday April 28th, and needs your help to make a difference! From 1-3pm at Mifflinburg FFW (Carnival) Grounds there will be a variety of projects youth can get involved in such as making blankets for Camp Dost (a pediatric cancer camp), welding, and repairing a stage for the fire company. Kelsey's Dream is also holding a food drive to support the Power Pack Program, so please bring soda tabs or food items to this location if you can! Come join us this Sunday to make a difference in your community!

**Haven to Home Canine Rescue Event**  
Damon's Grill in Lewisburg is sponsoring a fundraising event for Haven to Home Canine Rescue on May 17th, 18th, and 19th. This employee driven event will be accepting donations on behalf of Haven to Home. Damon's Grill will be giving a free appetizer card, which can be redeemed on any future visit, with the donation of a 10 lb. bag of dog food or any monetary donation of \$5.00 or more. Please join us in this wonderful fundraising event and help support Haven to Home and Damon's Grill. All donations will go toward the medical expenses of our furry friends.

**NOTE TO READERS**  
To place events in the calendar please send them at least three weeks before the event so that we can get it in at least twice before the event. The deadline for events is MONDAY BY 12 NOON! The calendar goes by space available. Send, Fax or Email us your event. Address: P.O. Box 356, Middleburg, PA 17842. Fax: 837-0776. Email: scuc@ptd.net Thank you!!

# Police

**STATE POLICE, MILTON**  
**Identity Theft** 3 p.m. April 14, in White Deer Township. Unknown actor(s) obtained the social security number of a known female, then used this number to file an income tax report.

**Crash** 1:27 p.m. April 17, on Old Turnpike Road, 148 feet East of Young Road, Buffalo Township. This accident occurred as William Brennan, 70, of Carlisle attempted to make a left turn onto Rt. 45 from a driveway. Thelma Hackenberg, 68, of Penns Creek, was traveling West on Rt. 45. Brennan made entrance to the highway. Hackenberg attempted to swerve to miss Brennan's 2012 Toyota Tacoma. The front driver's side bumper of Brennan's pickup impacted the rear passenger's side of Hackenberg's 2006 Buick Lucerne. Brennan's vehicle came to a final rest. Hackenberg's vehicle traveled south via the berm into a field where it came to final rest.

**Crash** 8:20 p.m. April 17, on Old Turnpike Road, at the intersection with Dreisbach Church Road, Buffalo Township. The crash occurred as Raymond Dorley, 82, of Lewisburg, was traveling West on Rt. 45 and attempted to make a left turn to travel South on Dreisbach Church Road. Lonny Bennage, 36, of Mifflinburg, was traveling East on Rt. 45. Dorley made a left turn movement without ascertaining proper clearance. Bennage attempted to avoid the crash by braking and eventually laying his 2011 Kawasaki Valcun down and separating from it. Bennage continued to slide along the roadway until impact with Dorley's 1994 Oldsmobile Cutlass. After impact, Dorley's vehicle rotated clockwise coming to final rest facing Northwest along an embankment. Bennage's motorcycle came to final rest facing South in the center of the intersection.

**Hit and Run** 12:30 a.m. April 19, at the intersection of Rt. 45 and Beaver Run Road, Buffalo Township. An unknown operator was stopped on Rt. 45 facing East at the intersection with Beaver Run Road. That operator struck the rear of Jacob Tanner, 18. The unknown operator then went around the passenger side of Tanner's 2012 Subaru Legacy, striking it on the front passenger's side. The Black late model Ford Taurus (with a cracked windshield) then fled North on Beaver Run Road. The unknown operator then stopped at the intersection of Beaver Run Road and Rt. 192 to change a tire. Anyone with information concerning this incident, please contact PSP Milton referencing incident #F06-1179089.

**Recklessly Endangering** Between 9:45 a.m. and 10 a.m. April 19, along Rt. 1008, near White Deer Elementary School, White Deer Township. An unknown male wearing dark clothing riding a bicycle traveling West on Rt. 1008 passed by the White Deer Elementary School while some children were outside playing at recess. The unknown male possibly had a handgun and a "pop" sound was heard. All of the children were escorted back into the school without incident. This was observed by students who were outside playing in the playground. A search of the area was conducted by Pennsylvania State Police, Milton Borough Police, and Union County Sheriff's Department with negative results on locating anyone fitting the above listed description.

**Retail Theft** Between 12:45 a.m. and 2:23 a.m. April 16, at Wal-Mart, 120 AJK Blvd., Lewisburg, in Kelly Township. Shawn Eckhart, 26, of Trevorton, allegedly took baseball cards off of the shelf and concealed items in his coat pocket. Eckhart then took sneakers off of the shelf and wore them out of the store. The total stolen is \$417.67. Charges have been filed at District Court 17-3-01. This investigation continues.

**Retail Theft** Between 2 p.m. and 2:30 p.m. January 31, at Wal-Mart, 120 AJK Blvd., Lewisburg, in Kelly Township. An unknown suspect arrived at the store, loaded a cart of merchandise and left the store without paying for such items. The identified vehicle was a Silver Mercedes Benz with Texas registration plates. If anyone has information relating to this incident, please contact PSP Milton at (570) 524-2662.

**Crash** 8:50 p.m. April 21, on Rt. 44, 1476 feet West of Devitts Camp Road, Gregg Township. This occurred as Ronald Staggert, 49, of Allenwood, was traveling North on Rt. 44, in the right lane, at a high rate of speed. Staggert's 2011 Chevrolet Silverado was driven off of the East side of the roadway and struck a utility pole with the right front. Staggert continued in a NNE direction, for approximately 36 feet before striking a split rail fence and a bush. The vehicle continued another 40 feet and hit a corner split rail fence and another 24 feet before striking a second corner split rail fence. The vehicle continued NNE approximately 60 feet and struck a second utility pole with its front. After impact, the vehicle began to rotate counter clockwise, traveling approximately 450 feet before coming to rest facing West, approximately 120 feet East of the roadway.

## Chubb's Auction Prices

The following items were sold on **Thursday, April 18, 2013**  
1st Cut Mixed Hay: \$205 per ton; Mixed Hay 50 Bale Load: \$200 per ton; Timothy Hay: \$235 per ton; Ear Corn: \$165 per ton; Oats: \$4.25 per bale.

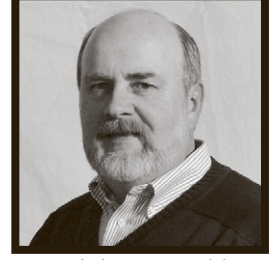
## Middleburg Livestock Auction

The following items were sold on **Tuesday, April 23, 2013**  
Timothy: \$190 to \$265 per ton; Grass: \$150 to \$315 per ton; Grass: \$25 per bale; Mixed: \$180 to \$320 per ton; Mixed: \$27.50 per bale; Straw: \$115 to \$180 per ton; Straw: \$25 per bale; Ear Corn: \$140 to \$165 per ton; Oats: \$3.75 to \$5.50 per bushel; Alf: \$5 to \$212 per hundred; Fats: \$73 to \$126.50 per hundred; Cow: \$13 to \$81 per hundred; Bull: \$77.50 to \$103.50 per hundred; Feeder: \$30 to \$150 per hundred; Hogs: \$37 to \$59 per hundred; Pigs: \$55 per head; Sows: \$28 to \$46 per hundred; Boars: \$12.50 to \$18 per hundred; Sheep: \$30 to \$85 per hundred; Goat: \$15 to \$252 per head; Lamb: \$115 to \$167 per hundred; Caull Pig: \$17 to \$28 per hundred.

## Buffalo Valley Auction Prices

The following items were sold on **Tuesday, April 23, 2012:**  
**Produce:** Apples: \$6 to \$9 per 1/2 bushel; Bananas: \$5 to \$9 per case; Cucumbers: \$16 per bushel; Eggs: 75¢ to \$1.50 per dozen; Lettuce: 50¢ per head; Spanish Onions: \$6 to \$16 per 50 pounds; Sweet Potatoes: \$7 to \$10 per 50 pounds; White Potatoes: \$4 to \$9 per 50 pounds; Green Zucchini: \$7 to \$9 per 1/2 bushel. **Flowers:** Potted Annuals: 50¢ to \$2.50 per pot; Potted Herbs: 25¢ to \$1 per pot; Potted Vegetable Plants: 35¢ to \$1 per pot; Vegetable Plants: \$4 to \$7 per flat; Flowers: \$4 to \$8 per flat; 10 inch hanging baskets: \$4 to \$15 per basket; Perennials: \$1 to \$3 each. **Nursery Stock:** Three Gallon Shrubs: \$3 to \$10 each; Two Gallon Shrubs: \$2 to \$4 each; One Gallon Shrubs: \$3 to \$6 each; Fruit Trees: \$10 to \$15 each; Shade Trees: \$10 to \$17 each.

**WANTED**  
Your Unwanted Vehicle  
Old • New • Wrecked  
Instant Cash  
Toll Free  
1-866-748-7042

  
Dwight W. Runkle  
Owner/Agent  
**For all your insurance needs.**  
Home • Auto • Commercial  
Specializing in Farms, Country Property & Cabins  
Goodville Mutual  
Runkle Agency, LLC  
102 Forest Hill Rd.  
Mifflinburg, PA 17844  
drunkle@dejazzd.com  
Office: 570-966-6103  
Fax 570-966-6104

# Courts

**Deeds:**  
Andrew A. Reiff & Marlene F. Martin Reiff to Gayla Doolittle property in Lewis Township for the sum of \$115,000.00.

Deborah L. Churm & Deborah L. Zimmerman & Donald L. Zimmerman to Donald L. Zimmerman property in Hartley Township for the sum of \$1.00.

Samuel J. Snyder & Daniel J. Mulligan property in Lewisburg for the sum of \$100,000.00.

Erick R. Mitchell & Jilliene L. Mitchell to Nikolay A. Mironenko property in New Berlin for the sum of \$39,000.00.

Terry C. Bittner & Brenda L. Bittner & M&C to J&H Enterprise LLC property in Mifflinburg Borough for the sum of \$92,040.00.

Randall L. Snyder & Kathy A. Snyder to Philip J. Stamm & Sara Fleming property in Lewisburg Borough for the sum of \$185,000.00.

Alice Kathryn Vanbuskirk & Reuben Scott Brouse & Mary Kathryn Brouse & Harold E. Brouse & Terry L. Vanbuskirk & Carla E. Brouse to Terry L. Vanbuskirk & Alice K. Vanbuskirk property in Hartley Township for the sum of \$1.00.

**Marriage Licenses:**  
Emir Ivan Uriel Navarro, Milton to Linda Margaret Lattimore Milton

Edward John Carney Jr., Winfield to Krista Ann Breeding, Winfield

Jacob Allen Kistler, Lewisburg to Sara Mae Dorman, Millmont

**DISTRICT JUDGE LEO ARMBRUSTER, LEWISBURG**  
**Charged** Mark Douglas Durussell, 48, of Watsonstown, with two counts of driving under the influence of alcohol or controlled substance, registration card to be signed and exhibited on demand, required financial responsibility, driving on roadways laned for traffic, prohibition, turning movements and required signals and careless driving on April 16.

**Charged** Kenleigh T. Bunn, 20, Fairfield, CT, with false identification to law enforcement authorities, scattering rubbish, possession open container, purchase, consumption, possession or transportation of liquor or malt or brewed beverage and carrying a false identification card on April 4. A preliminary hearing is scheduled for May 9, at 8:30 a.m.

**Charged** Ryan John Lebreton, 34, of Lewisburg, with two counts of driving under the influence of alcohol or controlled substance and registration and certificate of title required on April 16.

**Charged** Joseph Harry Hogendobler, 56, of Danville, with two counts of driving under the influence of alcohol or controlled substance, driving on roadways laned for traffic, careless driving, and operating of vehicle without official certificate of inspection on April 16.

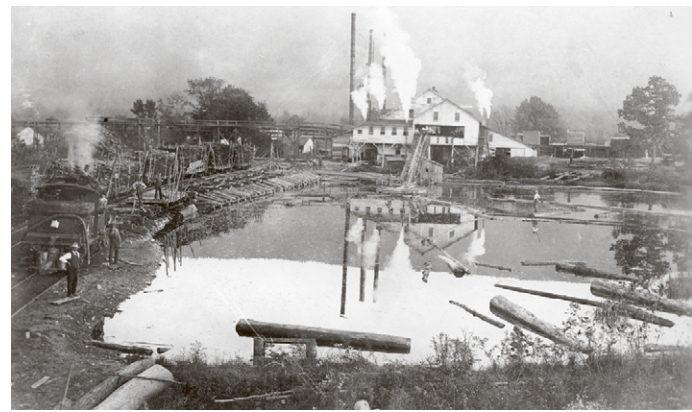
**DISTRICT JUDGE JEFFREY L. MENSCH, MIFFLINBURG**  
**Charged** Curtis Lee Derr, 25, of Mifflinburg, with two counts of burglary - overnight accommodations - no person present, theft by unlawful taking or disposition, receiving stolen property, and criminal mischief on April 16. A preliminary hearing is scheduled for April 30, at 1 p.m.

**Charged** Nathan Eugene Derr, 22, of Lewisburg, with two counts of burglary - overnight accommodations - no person present, theft by unlawful taking or disposition, receiving stolen property, and criminal mischief on April 16. A preliminary hearing is scheduled for April 23, at 2 p.m.

**Charged** Sean Leitzel, 19, of Mifflinburg, with theft by unlawful taking or disposition, receiving stolen property and sale or transfer of firearms on April 10. A preliminary hearing is scheduled for May 7, at 11:45 a.m.

**Charged** James Rodney Emery, 39, of Mifflinburg, with two counts of official oppression - deny - privilege - etc. and harassment - course of conduct/acts serve no purpose on April 15. A preliminary hearing is scheduled for May 14, at 1:30 p.m.

# Flashback



In 1897-98, the Laurelton Lumber Company ran a narrow-gauge track north to the south slope of Paddy Mountain. The steam-powered locomotives were referred to as "dinkeys." In this photograph, dated about 1904, one sees the dinkey engine and tracks to the left and the mill reflected in the mill pond, fed by Laurel Run, in the center. (Union County Historical Society)

# Births

A girl, **Bridget Marie**, was born on April 16, 2013, at 1:07 p.m., at Evangelical Community Hospital, Lewisburg, to Andre & Megan (Mitchell) Wagner of Beavertown. The grandparents are Michael & Elizabeth Mitchell of Beavertown, Garry & Rise Wagner of Hendersonville, NC and LaDonne Wagner of Greer, SC.

**©1997 Snyder/Union County Times, Inc.**  
405 East Main Street, Middleburg, Pa. 17842  
Telephone: 570-837-6065 Fax: 570-837-0776  
Email: scuc@ptd.net  
Hours: Monday, Tuesday, & Wednesday 8-4  
Publisher/Owner: Susan Weaver  
In-Office Staff: Angela Brouse, Valerie Hollenbach & Jessica Whipple  
Advertising Staff: Brian Sheeler & Donnie Hackenberg  
Editor: Honey Hipple

The Union & New Berlin Gazette were merged to become the Union Times in 1822 and this was the start of the Union County Times. Standard postage paid at Post Office, Middleburg, PA 17842. Send all address changes to Snyder County Times, Inc., P.O. Box 356, Middleburg, PA 17842.

**Subscription Rates:** Businesses \$31.00 in county, residents \$36.00 out of county, \$45.00 out of state, \$55.00 out of country, News stand 50 cents.

**Submission policy:** The Snyder County Times reserves the right to reject or revise any copy which considers objectionable, either because said copy is not keeping with usual newspaper standards of propriety or for any other reason deemed material by the Publisher. In any event, the advertiser or advertiser's agency assumes liability for the content of all advertising copy printed and agrees to hold harmless from all claims arising there for made against the Snyder County Times or its subsidiary publication. Publisher is not responsible for copy omission, typographical errors, or any unintentional errors that may occur in advertisement. Liability of Publisher is limited to only amount of space consumed by such error. All advertising accepted on this basis. All submissions must include the sender's name, address and daytime telephone number.

**Deadlines:** Articles and Display advertisements must be submitted by 12 noon Wednesday to be considered for publication. Community Events must be submitted by 12 noon Monday. There will be no exceptions to this rule.

**Photographs:** Snyder County Times Inc. is not responsible for the safe return of any photograph. Photographs submitted can be picked up at the newspaper office or sent back with a self-addressed envelope with a stamp.

**Articles:** Snyder County Times Inc. reserves the right to accept, reject and edit all submitted articles. To be considered for publication, articles must include the sender's name, address and a daytime telephone number. The Snyder County Times is not responsible for errors due to hand written copy. Articles will be printed on a First Come First Serve Basis.

**Emails:** Snyder County Times Inc. reserves the right to accept, reject and edit all submitted articles. To be considered all emails MUST have include the sender's name, address, a daytime telephone number, and a subject line. The Snyder County Times is not responsible for typographical errors in emails.

We mail to over 15,000 households in Snyder County and over 9,000 in Union County. Opinions are not necessarily the same view of the Newspaper or Management. Member of the Pennsylvania Newspaper Publishers Association.



# Obituaries

# PA Dutch Life & Culture

# PA Lottery Results

**Lois J. Boop, 82, Mifflinburg**  
MIFFLINBURG — Lois J. Boop, 82, of 34 E. Maple St., since 1960, entered into rest at 10:13 a.m. Wednesday, April 17, 2013, at Geisinger Medical Center, Danville.

A memorial services was conducted at 11 a.m. Monday, April 22, at the Roupp Funeral Home, Inc., 8594 Old Turnpike Road, Mifflinburg, with the Rev. Ronald Warfle, officiating.  
Burial was in the Lincoln Chapel Cemetery, Laurelton.

**F. Geraldine Horne, 90, Lewisburg**  
LEWISBURG — F. Geraldine Horne, 90, of Buffalo Valley Lutheran Village, and formerly of Selinsgrove, passed away on Thursday, April 18, 2013.

Funeral services were conducted at 11 a.m. Tuesday, April 23, at the Christ Community United Methodist Church, with the Rev. Randall Bennett Jr. officiating.  
Burial was in Northumberland Memorial Park Cemetery, Stonington.

**Rosemary Dean Delaney, 87, Lewisburg**  
LEWISBURG — Rosemary Dean Delaney, 87, of Lewisburg, passed away Thursday morning, April 18, 2013, at her home.

Friends and relatives will be received from 10 to 11 a.m. Saturday, April 27, in the Lobby of Sacred Heart Church, followed by a Celebration of a Mass of Christian Burial at 11 with the Rev. Msgr. William M. Richardson, as celebrant.  
Burial will follow in Lewisburg Cemetery.

**Ronald P. Lewis, 76, Lewisburg**  
LEWISBURG — Ronald P. Lewis, 76 of Lewisburg, and Carmel by the Sea, Calif., passed away on Monday, April 15, 2013, at Evangelical Community Hospital, Lewisburg.

Funeral services were conducted at 1 p.m., Thursday, April 25, at Cronrath-Grenoble Funeral Home, 106 S. Second Street, in Lewisburg, with Pastor John Lee officiating.

**Mary Snyder Keister, 81, Lewisburg**  
LEWISBURG — Mary Snyder Keister, 81, of 616 Market St., passed away early Sunday morning, April 21, 2013, in Evangelical Community Hospital, Lewisburg.

Funeral services were conducted at 12 noon Wednesday, April 24, at the John H. Shaw III Funeral Home, Market and Eighth streets, Lewisburg, with the Rev. John H. Shaw III officiating.  
Burial was in Lewisburg Cemetery.

**Peter J. Talmadge, 45, Lewisburg**  
LEWISBURG — Peter J. Talmadge, 45, of Lewisburg, passed away on Saturday, April 20, 2013, at Geisinger Medical Center, Danville.

Funeral services were conducted at 7:30 p.m. Wednesday, April 24, at the Day Funeral Home, 361 Maple Place, Keyport, N.J.  
Cremation will be private.

**Timothy Wayne Stroup, 47, New Berlin**  
NEW BERLIN — Timothy Wayne Stroup, 47, of New Berlin, entered into rest at 10:38 p.m. Friday, April 19, 2013, at Geisinger Medical Center, Danville.

A memorial service to celebrate Tim's life was conducted at 7 p.m. Wednesday, April 24, at Christ Community Church, 2746 Route 235, Millmont, with Pastor Jason Hostettler and the Rev. Brad Brought officiating.

**Harry S. Wertz, 92, Millmont**  
MILLMONT — Harry S. Wertz, 92, of Millmont, formerly of Milroy, entered into rest at 11:30 a.m. Sunday, April 14, 2013, at Rolling Hills Manor, Millmont.

Funeral services were conducted privately with burial in Salem Cemetery, Milroy.

**Ruth C. Ale, 81, Lewisburg**  
LEWISBURG — Ruth C. Ale, 81, of Lewisburg, formerly of Milton, passed away on Monday, April 22, 2013, at RiverWoods, Lewisburg.

Friends and relatives will be received from 10 to 11 a.m. Monday, April 29, in the Shaw Funeral Home, 400 N. Front St., Milton, followed by a memorial service at 11 with the Rev. Alice Rauch, RiverWoods chaplain, officiating.  
Burial will be in Northumberland Memorial Park, Stonington.

And some more interesting Glossary words:  
**HICKORY NUT**---The highly prized fruit of the hickory tree. (Carya ovate) which is considered by the Pennsylvania Dutch to be superior to any other nut. There are positively no substitutions! Also called shellbark.

**HOG'S LARD**--- Lard or fat rendered from a pig or hog. Tallow or beef fat was also used for cooking or frying.

**HOMEMADE YEAST**--- liquid yeast made from various combinations of potatoes, sugar and sometimes hops. A portion of active yeast from a previous batch is added to "make it work."

**HONEY**--- A home produced sweetening. Bees were once a part of every homestead, thus increasing their self-sufficiency.

**HOPS**--- A small cone like fruit of the hop vine, once grown in most gardens. It is useful in making yeast and in the brewing of beer.

**JUMBLES**--- A very old name for a small cake (cookie) or sweetmeat, generally made in the form of a circle or wreath.

**LOAF SUGAR**--- Cone sugar. Sugar was molded into cones, weighing as much as 55 pounds, up to the mid-19th century. Smaller cones, under 12 pounds, were fashioned with a rounded nose and were commonly called loaves. Granulated sugar didn't become popular until after the Civil War, and even then was coarse and brown. White sugar as we know it today, was reserved for special occasions until the early years of the present century. "A" sugar was a soft yellow sugar used for common baking purposes.

**MIDDLING**--- Average.

**MOLASSES**--- Refiner's syrup. A rather heavy-bodied, light-colored product resulting from the refining of sugar. It is commonly referred to as barrel molasses because it was, and still is shipped in barrels, to the stores, where the grocer tapped the sweetening into a jar you would provide.

**MUFFIN RING**--- Metal form for shaping muffins on a baking iron or griddle.

*(From the Boyertown Area Cookbook, used with permission)*

For many years I kept and frequently used, a sour dough starter... And so I assume this is the way these cooks in olden times kept their "yeast" for baking. It's easier to use commercially prepared yeast, but it's not nearly so good!

I would love to hear your comments on some of these terms. Jean Markley Keiser, 1133 Carolina Ave., West Chester, PA 19380 bjkeiser@cheerful.com

**Results for 4/17/13**  
Daily Number (Mid-day): 0 0 3  
Daily Number (Evening): 0 6 5  
Big4 (Mid-day): 4 6 0 5  
Big4 (Evening): 4 2 5 9  
Quinto (Mid-day): 5 5 3 3 0  
Quinto (Evening): 5 3 0 5 0  
Treasure Hunt: 01 04 07 13 21  
CASH 5: 04 05 19 24 42  
Powerball: 13 18 36 48 58  
PB: 28

**Results for 4/18/13**  
Daily Number (Mid-day): 6 3 1  
Daily Number (Evening): 5 0 0  
Big4 (Mid-day): 1 5 9 5  
Big4 (Evening): 3 5 0 3  
Quinto (Mid-day): 9 6 3 4 5  
Quinto (Evening): 6 3 2 6 5  
Treasure Hunt: 01 05 08 14 18  
CASH 5: 05 15 18 20 38  
Match 6: 05 06 15 37 42 47

**Results for 4/19/13**  
Daily Number (Mid-day): 3 7 3  
Daily Number (Evening): 8 6 8  
Big4 (Mid-day): 5 4 5 5  
Big4 (Evening): 4 0 2 2  
Quinto (Mid-day): 5 6 9 3 2  
Quinto (Evening): 8 8 5 4 0  
Treasure Hunt: 08 11 14 21 23  
CASH 5: 17 19 21 23 34  
Mega Millions: 06 08 12 22 43  
MB: 28  
MP: 04

**Results for 4/20/13**  
Daily Number (Mid-day): 4 0 2  
Daily Number (Evening): 5 3 5  
Big4 (Mid-day): 7 3 2 9  
Big4 (Evening): 5 7 3 6  
Big 4 Double Draw (Evening): 0 4 5

Quinto (Mid-day): 7 9 2 2 4  
Quinto (Evening): 6 1 9 5 1  
Treasure Hunt: 02 04 09 20 22  
CASH 5: 04 05 09 12 23  
Powerball: 06 08 30 39 48  
PB: 20

**Results for 4/21/13**  
Daily Number (Mid-day): 2 1 9  
Daily Number (Evening): 6 1 4  
Big4 (Mid-day): 6 1 8 5  
Big4 (Evening): 4 6 9 2  
Quinto (Mid-day): 0 4 4 9 2  
Quinto (Evening): 8 0 8 1 6  
Treasure Hunt: 04 08 14 17 30  
CASH 5: 12 16 30 37 39

**Results for 4/22/13**  
Daily Number (Mid-day): 6 5 7  
Daily Number (Evening): 2 9 5  
Big4 (Mid-day): 5 1 5 1  
Big4 (Evening): 2 9 5 4  
Quinto (Mid-day): 9 0 2 9 8  
Quinto (Evening): 1 0 7 1 7  
Treasure Hunt: 01 10 11 13 29  
CASH 5: 07 28 34 36 43  
Match 6: 06 13 17 20 23 44

**Results for 4/23/13**  
Daily Number (Mid-day): 0 4 9  
Daily Number (Evening): 0 8 1  
Big4 (Mid-day): 5 5 1 4  
Big4 (Evening): 0 8 7 3  
Quinto (Mid-day): 4 3 7 1 5  
Quinto (Evening): 8 9 9 0 6  
Treasure Hunt: 01 02 10 16 19  
CASH 5: 13 19 26 39 41  
Mega Millions: 09 21 22 32 50  
MB: 10  
MP: 03

## First Community Foundation Partnership of Pennsylvania Announces the "Parade of Buffaloes"



**Jennifer Wilson, President & CEO of the First Community Foundation Partnership of Pennsylvania is joined by Senator Gene Yaw, the Union County Commissioners and buffalo sponsors Culligan of Lewisburg, Evangelical Community Hospital, M&T Bank, Mifflinburg Bank & Trust, and Swineford Bank to announce the Union County "Parade of Buffaloes"**

The First Community Foundation Partnership of Pennsylvania (FCFP) is proud to announce the "Parade of Buffaloes" in celebration of Union County's Bicentennial. The "Parade of Buffaloes" will create an opportunity to celebrate the bicentennial, while establishing new partnerships between FCFP, the County and its residents. Most importantly, philanthropic support of the project will increase the unrestricted dollars available for grant making to meet the needs of non-profits serving residents of Union County.

The "Parade of Buffaloes" will consist of fifteen fiberglass buffaloes. One buffalo will represent each of the fourteen municipalities in Union County as well as one at the County building. Each municipality will be responsible for decorating and painting their buffalo for permanent display at a location of their choice in their respective community.

The "Parade of Buffaloes" will come to life as the herd will be featured in the 4th of July parade in Union County. On October 24, 2013, the community will have the opportunity to vote for their favorite buffalo which will be on display on Main Street, Lewisburg, prior to the Great Bison Debate.

The Community Foundation is working to secure financial support from community sponsors to help grow the Union County Community Fund and cover the costs of the fifteen buffaloes. To date, five community sponsors have partnered with the Community Foundation including Culligan of Lewisburg,

Evangelical Community Hospital, M&T Bank, Mifflinburg Bank & Trust, and Swineford Bank.

Community Sponsorship opportunities are still available by contacting FCFP at (866) 901-2372. As a Community Sponsor, you will receive recognition in all marketing and advertising materials, public recognition at the Great Buffalo Debate, and on a permanent plaque to be housed at the Union County Building. Your gift to the "Parade of Buffaloes" project will show that in working together we can build a better community for all who call Union County home!

The First Community Foundation Partnership of Pennsylvania works regionally and locally to bring together people, partners and places to grow local giving and investment, strengthen area organizations and results, and take on the critical issues and efforts needed to build vibrant communities and a thriving north central Pennsylvania region. FCFP serves the Danville Area, Union County, and Williamsport & Lycoming County.

Since 2005, the Community Foundation has made 59 grants from the Union County Community Fund to 30 nonprofit organizations, totaling \$109,191. For more information on the programs and services offered by the Community Foundation, or to learn more about ways to make a difference in your community, contact the Community Foundation office at (866) 901-2372.

**BAD BOY MOTORCYCLES**  
Middleburg, PA 17842  
(Between Kreamer & New Berlin on Smalsh Barrack Road)  
Specializing In Harley Davidson's  
Opening April 23rd.

Open: 10am - 6pm Tues.-Sat | Phone: 570-374-2447  
For appointments call after 6pm | Text Only: 570-541-5408  
Email: badboymotorcycle@hotmail.com

Advertising Specialty Products

**GRG**  
**Green Ridge Graphics**  
skilled screen printing  
East of Mifflinburg Off of Route 45

we do 4-color process printing | 570-966-2621 | Full Art Department

**PAYING CASH**

For all Types of Poultry and Rabbits

Will Pick Up!  
Call: 570-541-8921

**Roupp FUNERAL HOME INC.**  
Andre W. K. Roupp, Supervisor  
8594 Old Turnpike Road  
Mifflinburg, PA 17844  
(570) 966-2402  
www.rouppfuneralhome.com

**ZIMMERMAN'S**  
We Do Deer Processing  
Custom Butchering  
Homemade Ring Bologna  
Phone: 966-2441  
Wed.-Fri. 9-5:30, Sat. 8:30-12  
2 mi. East of New Berlin, On Rt. 304 & Corner of Little Mexico Rd.

**Spring Into Savings!**

Save Up To **\$1,000** on a Central Boiler Outdoor Wood Furnace\*

Don't wait any longer! Start saving money on your heating bill when you heat your entire home, water, and more with the safe, even heat of a Central Boiler outdoor furnace.

**CENTRAL BOILER**

**PALACE CREEK**  
888-539-4606  
7836 S. Susquehanna Trail, Port Trevorton  
\*Instant rebate savings up to \$1000 on select, in-stock Central Boiler outdoor furnace models. Savings shown is on an E-Classic 1400 model. See dealer for details.

# BUSINESS DIRECTORY

**Vacuums**

**Chatham's Vacuums**  
113 Market Street, Lewisburg  
(570) 522-8116

**Riccar**  
"The First Name in Vacuums That Last"

We Service Most Makes and Models

**Appliance Repair**

**A-Budget Appliance Repair**  
We repair all makes and models of...  
Washers - Dryers - Refrigerators  
Freezers - Stoves  
Ask for a 10% Discount!  
Fully Insured  
We service Snyder, Union, Northumberland, Columbia & Montour Co.  
(570) 233-0599

**Massage Therapy**

**MARY LOU NEILSON**  
Licensed  
15 Years Experience  
35 Maplewood Dr. Apt. 1  
Riverswoods, Lewisburg  
\$40= 1 Hour  
\$25= 1/2 Hour  
570-412-4024

**Mowing**

**Moose Lawn Mowing**  
Middleburg, PA  
(570) 837-3805

- Residential & Commercial
- Insured

**Joshua Scholl**

**Sewing Machines**

**HOEVER'S BERNINA SEW LLC**  
Hours:  
Mon., Wed. & Thurs. - 9am-4pm;  
Tue. & Fri. - 9am-8pm;  
Sat. - 9am-3pm  
966-3822  
2282 Beaver Road  
Mifflinburg, PA 17844

**Appliance Repair**

**PEACHEY'S Appliance Repair**  
WE FIX:  
Washers, Dryers, Dishwashers, Ranges, Refrigerators, Freezers  
For Service Call:  
(570) 966-3322  
For Parts Call:  
1-877-382-4936

**Door Service**

**America's Favorite Garage Doors**  
Residential & Commercial Sales & Service  
**BUFFALO VALLEY DOOR SERVICE**  
Along Rt. 104 S. Mifflinburg, PA 17844  
570-966-4064

**Quilting**

**Paulette's Quilting Place**  
**Long Arm Quilting Custom Quilting**  
2608 Red Bank Road  
Middleburg, PA 17842  
From Rt. 104, turn right on Red Bank Road and go 1/4 miles to the brown barn on the left at Redcourt Lane!  
539-8402

**Signs**

**WE STICK TO IT...**  
**POTOSKI DECAL SERVICE**  
RT. 45 Millmont, PA  
(570) 922-3361  
www.westicktoit.com

- Truck Lettering • Quality Banners
- Magnetic Signs • Window Graphics • Custom Stripes • Job Site Signs
- Custom Labels • Vehicles Wraps
- Building Letters • Gift Certificates

Remove & Install

**LAWN & GARDEN**

**Harry's LGC LAWN & GARDEN CENTER**  
402 Main Street  
Hartleton, PA 17845  
**COUNTRY CLIPPER**  
First With Innovations That Last  
ZERO TURN MOWERS  
GARDEN SEEDS & SUPPLIES  
570-922-4302



# Sport's Scores

## HIGH SCHOOL BOYS TENNIS

Selinsgrove 3, Williamsport 2  
 Bloomsburg 5, Mifflinburg 0  
 Lewisburg 5, South Williamsport 0  
 Selinsgrove 5, Jersey Shore 0  
 Williamsport 4, Mifflinburg 1  
 Lewisburg 5, St. John Neumann 0  
 Mifflinburg 3, Shikellamy 2

## BOYS LACROSSE

Selinsgrove 6, Lewisburg 5 (OT)  
 Selinsgrove 14, Mifflinburg 4

## GIRLS LACROSSE

**Lewisburg 10, Mifflinburg 4:** Mifflinburg scorers: Dani Ard (2 goals), Megan Mensch (1 goal), Lexi Erb (1 goal)  
 Mifflinburg goalkeeper: Casey Monahan 2 saves, Torie Styers 1 save.  
 Lewisburg scorers: Hannah Gotoff (4 goals), Sarah Talabiska (3 goals), Maggie Connolly (2 goals), Ashley Bilger (1 goal), Rachael Murphy (1 assist).

**Mifflinburg JV 11, Lewisburg 5:** Mifflinburg scorers: Chrystan Provost (1 goal), Katie Snyder (1 goal), Ashley Confer (1 goal), Kayla Forchieskie (1 goal), Gillian Allen (2 goals, 1 assist), Rachael Peoples (2 goals), Tabb Koch (2 goals), Jordan Caprioli (1 goal), Dani Ard (2 assists).  
 Mifflinburg goalkeeper: Casey Monahan 2 saves.  
 Lewisburg scorers: Alexia Connors (3 goals), Peyton Clark (1 goal), Amaka Eze (1 goal).  
 Mifflinburg's Varsity Season Record 2-3. Mifflinburg JV season record 4-0.

Lake-Lehman 13, Selinsgrove 12  
**Lake-Lehman 12, Mifflinburg 3:** Mifflinburg scorers: Kiersten Dauberman (1g), Tessa Woodring (2g), McKenna Magyar (1a), Katie Snyder (1a).  
 Mifflinburg goalkeeper: Casey Monahan 6 saves.  
 Lake Lehman scorers: Alysa Adams (6g), Hannah Bonomo (2g), Mallory Wilson (1g, 1a), Courtney Thomas (1g), Hannah Stull (1g), Emily Galasso (1g), Ashlee Barker (1a), Colleen Spencer (1a).  
 Mifflinburg's Varsity Season Record 2-4. Mifflinburg JV season record 4-0.

Lewisburg 14, Selinsgrove 12  
**Mifflinburg 13, Midd-West 12 (OT):** Midd-West lead most of the game by as much as 3 goals, but Mifflinburg came back in the second half to take the lead with 6 minutes left in the game. Nackea Bachman, with a feed from Katie Kreider, tied the score at 12 with 55 sec remaining to send the game into overtime. Mifflinburg won the draw and passed the ball downfield to Dani Ard, who was fouled. She scored the winning goal on a free position 1 minute into overtime. Mifflinburg scorers: Kiersten Dauberman (2 goals, 2 assists), Jordan Caprioli (2 goals, 1 assist), Lexi Erb (2 goals), Dani Ard (2 goals), Megan Mensch (2 goals), Tabb Koch (2 goals), Tessa Woodring (1 goal, 1 assist).  
 Mifflinburg goalkeeper: Torie Styers 6 saves.  
 Midd-West scorers: Nicole Horst (3 goals), Nackea Bachman (4 goals, 1 assist), Katie Kreider (3 goals, 2 assists), Kori Hasinger (1 goal), Brianna Beiler (1 goal).  
 Midd-West goalkeeper: Mikayla Freed 16 saves.

**Mifflinburg JV 12, Midd-West JV 1:** Mifflinburg scorers: Hannah Schultz, (3 goals), Katie Snyder (3 goals), Rachael Peoples (2 goals), Erin Nolan (1 goal), Gillian Allen (1 goal), Chrystan Provost (1 goal), Tabb Koch (1 goal, 1 assist).  
 Mifflinburg goalkeeper: Casey Monahan 2 saves.  
 Midd-West scorer: Brianna Beiler (1 goal).  
 Midd-West goalkeeper: Makayla Keister 6 saves.  
 Mifflinburg's Varsity Season Record 3-4. Mifflinburg JV season record 5-0. Midd-West's Varsity Season Record 5-4.

**BOYS TRACK & FIELD**  
 Selinsgrove 85, Lewisburg 65  
**GIRLS TRACK & FIELD**  
 Williamsport 76, Lewisburg 74  
 Selinsgrove 96, Lewisburg 54

**BASEBALL**  
 Mifflinburg 3, Lewisburg 2  
 Mifflinburg 14, Bloomsburg 6  
 Mifflinburg 8, Central Columbia 2  
 Hughesville 9, Selinsgrove 8  
 Milton 5, Midd-West 3  
 Midd-West 5, Mifflinburg 3

**SOFTBALL**  
 Danville 13, Selinsgrove 1 (5 innings)  
 Warrior Run 15, Lewisburg 0 (4 innings)  
 Milton 15, Midd-West 0 (3 innings)  
 Jersey Shore 13, Mifflinburg 3  
 Loudres Regional 15, Lewisburg 5 (5 innings)  
 Mifflinburg 8, Bald Eagle Area 3  
 Midd-West 21, Lewisburg 6 (3 innings)  
 Jersey Shore 17, Midd-West 0 (5 innings)  
 Mifflinburg 10, Shikellamy 0 (5 innings)  
 Shamokin 3, Selinsgrove 1

**COLLEGE MEN'S LACROSSE**  
 Susquehanna 10, Maryland 9  
 Bucknell 13, Colgate 8  
 Catholic 7, Susquehanna 4

## BASEBALL

Game 1: Susquehanna 6, Elizabethtown 3  
 Game 2: Susquehanna 4, Elizabethtown 3  
 Game 1: Bucknell 4, St. Francis 3  
 Game 2: St. Francis 5, Bucknell 4  
 Penn State 7, Bucknell 6 (12 innings)  
 Neumann 5, Susquehanna 1  
 Catholic 14, Susquehanna 2  
 Game 1: Army 7, Bucknell 0  
 Game 2: Army 5, Bucknell 2 (10 innings)

Game 1: Catholic 8, Susquehanna 4  
 Game 2: Catholic 6, Susquehanna 4

## SOFTBALL

Game 1: Susquehanna 7, Drew 2  
 Game 2: Susquehanna 10, Drew 0 (6 innings)  
 Game 1: Army 2, Bucknell 0  
 Game 2: Army 5, Bucknell 4  
 Game 1: Susquehanna 9, Gettysburg 1  
 Game 2: Susquehanna 5, Gettysburg 0

## MEN'S TENNIS

Lehigh 4, Bucknell 3

## GOLF

**BUCKNELL GOLF CLUB**  
**Hole-in-One:** Craig Keller, Hole 13 with 9 iron, 130 yds. Playing Partners: Keith Dunlap, Craig Harley, Matt Hile.

**SHADE MOUNTAIN GOLF CLUB**  
**T's & F's:** 1st: Cheryl Brandt, Gloria Wagner, 37; 2nd: Suzan Ruch, Katie McGlaughlin, 38; 3rd: Louise Styers, Chris White, 42. Lowest Putts: 1st: Chris White, 32; 2nd: Cheryl Brandt, 34; 3rd: Suzan Ruch, 35.

## RACING

### LINCOLN SPEEDWAY

**Lawrence Chevrolet 410 Sprints:** 1. 1S-Logan Schuchart (\$3,200); 2. 11C-Cory Haas; 3. 15-Adam Wilt; 4. 20S-Fred Rahmer; 5. 21-Brian Monteth; 6. 48-Danny Dietrich; 7. 87-Alan Krimes; 8. 59-Jim Siegel; 9. 19M-Brent Marks; 10. 25-J. Grasso. **Keizer Aluminum Wheels 358 Sprints:** 1. 52-Austin Hogue; 2. 65-Niki Young; 3. 5-Tyler Ross; 4. M1-Mark Smith; 5. 6R-Brad McClelland; 6. 1\*-Tim Wagaman; 7. 66-Dale Hammaker; 8. 97-Brie Hershey; 9. 45-Jeff Rohrbaugh; 10. 38-Mark Strickler. **Thundercars:** 1. 72-Jason Townsend; 2. 2W-Brian Walls; 3. 3W-Duane Watson; 4. 39-Wayne Dutterer; 5. 54J-Jimmy Combs; 6. 81J-Jamie Zentmyer; 7. 83-Mikey Guise; 8. 60-Danny Beard; 9. 54W-Roy Warehime (Dnf); 10. 9-Brian Diehl (Dnf).

**WILLIAMS GROVE SPEEDWAY**  
**Blazer's Body Shop Super Sportsman:** 1) 00 Rick Barr 2) 77 Russ Mitt 3) 1 Paul Miller 4) 99 Frankie Herr ( Sprint Aces Hard Charger ) 5) 222 Jay Fannasy 6) 25 Bobby Hockenberry 7) 30 Scott Dellinger 8) 38 Mike Enders 9) 93 Carmen Perigo Jr. 10) 21 Leroy Martin. **Newville Electrical Services 358 Late Models:** 1) 80 Wes Alleman 2) 15 Jared Miller 3) 48 Larry Baer 4) 12 Charlie Schaffer 5) 1 Gene Knaub 6) 2 Scott Richwine 7) 43 Jake Jones 8) 29 Steve Clabaugh 9) 25 Sam Gallagher 10) 72 Ron Coleman. **Newville Construction Services Street Stocks:** 1) 94 Mike Buckley 2) 11 Craig Morgan 3) 65 Bob Gutshall 4) 00 Pat Mcneal 5) 29J Jeff Haag 6) Super 7 Tim Drawbaugh ( Hard Charger ) 7) 99 Chad Smith 8) 48D Danny Farling 9) 1 Eric Tripp 10) 86 Scott Strickler.

**PENNS CREEK RACEWAY**  
**JR CAGED:** 1. Tyler Siegfried 2. Hayden Straub 3. John Moyer. **FLAT 350 (POINTS):** 1. Tyler Brown 2. Quentin Graham 3. Josh Snyder. **ADULT CAGED ANIMAL:** 1. Colton Walter 2. Chad Leeper 3. Doug Kesecker. **KID KARTS:** 1. Broc Morgan 2. Alexander Kadryna 3. Olivia Kadryna. **SR. CLONE 375:** 1. Dexter Strawser 2. Josh Kerstetter 3. Rick Auman. **ROOKIE CAGE BLUE:** 1. Mariah Romig 2. TJ Straub 3. Eric Tressler. **ROOKIE CAGE PURPLE:** 1. Colby Walter 2. Gannon Steimling 3. Ashlynn Rice. **BUILDER PREPARED CLONE:** 1. Matt Foreman 2. Chris Laforme. **JR. RESTRICTED:** 1. Wade Moore. **ANIMAL MEDIUMS:** 1. Brandon Secrest 2. Joe Sekula 3. Brian Schutt. **ANIMAL EXTRA HEAVIES:** 1. Mike Trevitz 2. Josh Wagner 3. Cale Snyder. **ROOKIE BLUE:** 1. Trevor Kerstetter 2. CJ Carson. **CAGE CLONE RED:** 1. Jacob Romig 2. Jarrod Bilger 3. Broc Morgan. **CAGE CLONE BLUE:** 1. Dylan Starr 2. Jess Sanso 3. Eli Barber. **SR. CLONE 340:** 1. Denny Ross 2. Billy Barnes 3. Justin Malarkey. **FLAT 375:** 1. Chris Mumie. **SR. CLONE/FLAT 400:** 1. Jason Nace 2. Terry Beasom 3. Norm Derk. **ADULT CAGED FLATHEAD:** 1. Colton Walter 2. Doug Kesecker 3. Brandon Secrest (DNS). **DIVAS:** 1. Jess Sanso 2. Kayla Johnson 3. Kay Morris. **FLAT 350 MONEY SERIES:** 1. Tyler Brown 2. Quentin Graham 3. Tyson Mowery.

# Kenseth Gets Second Win

By Gerald Hodges/the Racing Reporter

KANSAS CITY, Kan.—Matt Kenseth got his second Cup win of the season, as he held off a hard-charging Kasey Kahne.

Kenseth, the polesitter, led 97 laps of the 267 lap race. He took the lead after a restart on lap 221. At one point he was nearly a second ahead of the rest of the field, but Kahne steadily closed the gap. Kahne gave it his best shot with two laps remaining, but came up short by .015-seconds.

"Man that was some hard racing," said Kenseth. "I really thought he had me. Our car was incredibly fast, but he seemed to come on strong near the end."

For Kahne, it was also his second runner-up finish. "The car handled great all day, but we got a little looser than I expected near the end," said Kahne. "We fought hard, but came up a little short."

Jimmie Johnson was third, while Martin Truex and Clint Bowyer rounded out the top-5.

Brad Keselowski overcame a ton of problems to finish sixth. First, he had mechanical problems, then a loose wheel, and finally a fender-bender accident that took off most of the metal from the left rear of his car. His team patched it up with tape, allowing him to finish the race.

Jamie McMurray, Aric Almirola, Mark Martin and Paul Menard were the remaining top-10.

Ricky Stenhouse was leading the race with about forty five laps to go, but poor pit strategy probably cost him a higher finish.

Tony Stewart never got a grip on the handling of his car and finished 21st. His other teammate, Ryan Newman came in 14th, and Danica Patrick was 25th.

Kyle Busch had a terrible day. He spun several times, the first coming during the fifth lap. He skidded around a couple more times until he hit the outside wall during lap 105. After hitting the wall, he slid down the track and Joey Logano smacked into him. Both drivers were done for the day.

Denny Hamlin, regular driver of the Joe Gibbs Racing No. 11, is out with a back injury, but said there is a 50/50 chance he will be able to start Saturday's Richmond Cup race.

Top-10 unofficial leaders after 8 of 36: 1. Johnson-311, 2. Keselowski-298, 3. Kahne-274, 4. Biffle-264, 5. Earnhardt-263, 6. Edwards-262, 7. Kyle Busch-257, 8. Kenseth-252, 9. Bowyer-247, 10. Menard-240.

### CRAFTON WINS KANSAS TRUCK RACE

Matt Crafton held off Joey Coulter in a 25-lap, green-flag run to the finish to win Saturday's Truck Series race at Kansas Speedway. "This truck was junk Friday in practice," Crafton said. "They made so many changes on this thing that turned this race around. We knew we had something to win with about halfway through this race."

With Coulter on his bumper for the duration, Crafton's crew gave him some good advice.

"They said, 'Just put your head down and just flip your rearview mirror up and dig,'" Crafton said. "That's what we did."

Ryan Blaney, Brendan Gaughan, Johnny Sauter, James Buescher, Darrell Wallace, Ty Dillon, Ron Hornaday, and Timothy Peters were the remaining top-10 finishers.

Top-10 points leaders after 4 of 22: 1. Sauter-174, 2. Crafton-162, 3. Burton-149, 4. Blaney-141, 5. T. Dillon-135, 6. Buescher-133, 7. Gaughan-128, 8. Wallace-127, 9. Coulter-125, 10. Armstrong-121.

**TWO PENSKE TEAMS FINED**  
 As a result of what NASCAR termed violations for unapproved rear end configurations, prior to last week's race at Texas, the No. 2 and No. 22 Penske teams were hit with heavy fines and penalties.

There had been speculation in the garage area that one of the Hendrick Racing teams had tipped off NASCAR about the possible violations.

Jimmie Johnson met with members of the media at Kansas Speedway, and responded to allegations that his team, or another Hendrick team might have "ratted" on the two Penske Racing teams.

"When you have success on your side of the magnifying glass, the viewpoint for everybody, NASCAR, other teams, it gets a lot more intense," said Johnson. "The best officiating in the garage area has always been your neighbor. That has just been part of NASCAR for years and years. That is why NASCAR has the procedures in place that they do in the garage area and why even in F1 today they are not allowed to cover their stuff anymore. It's just part of it."

"With all that being said, no, the Hendrick group and the No. 48 team did not rat out the Penske cars."

As it pertains to the No. 2 car, driven by Brad Keselowski, crew chief Paul Wolfe has been fined \$100,000 and suspended from NASCAR until the completion of the next six NASCAR Sprint Cup Series championship points events (including the non-points Sprint All-Star Race) and placed on probation until Dec. 31.



Car chief Jerry Kelley, team engineer Brian Wilson and team manager Travis Geisler (serves as team manager for both the No. 2 and No. 22 cars) have been suspended until the completion of the next six NASCAR Sprint Cup Series championship points events (including the non-points Sprint All-Star Race) and placed on probation until Dec. 31.

The loss of 25 driver points and 25 owner points. As it pertains to the No. 22 car, driven by Joey Logano, the following penalties have been assessed:

Crew chief Todd Gordon has been fined \$100,000 and suspended from NASCAR until the completion of the next six NASCAR Sprint Cup Series championship points events (including the non-points Sprint All-Star Race) and placed on probation until Dec. 31.

Car chief Raymond Fox and team engineer Samuel Stanley have been suspended from NASCAR until the completion of the next six NASCAR Sprint Cup Series championship points events (including the non-points Sprint All-Star Race) and placed on probation until Dec. 31.

The loss of 25 driver points and 25 owner points. Keselowski refused to talk about the situation.

"I don't think I've been surprised by much of anything the last two or three days, but I think it's really important to let the appeals process work out," he said. "I'll save those comments for when it works out. I don't want to jeopardize our chance to have a clear appeal."

No date has been set for the appeals. Weekend Racing: The Nationwide and Cup teams will have night races at the .75-mile Richmond, Virginia track. The Truck teams do not race again until May 17.

Fri., Apr. 26, Nationwide race 7 of 33, Starting time: 7:30 pm ET; TV: ESPNNEWS.

Sat., Apr. 27, Sprint Cup race 9 of 36, Starting time: 7:30 pm ET; TV: FOX.

Racing Trivia Question: How many Cup races has Joe Nemechek won?

Last Week's Question: Where is the hometown of Kurt and Kyle Busch? Answer: It is Las Vegas, Nevada.

You may contact the Racing Reporter at [hodges@race500.com](mailto:hodges@race500.com)

**COMPLETE AUCTIONEERING SERVICE**

## PUBLIC AUCTION

**Saturday, May 18, 2013 at 9:00am**

Selling Real Estate, Antiques, Car, Guns, Coins, Households, & More for the Estate of Gladys Rowe, 102 Charles Avenue, Selinsgrove, PA 17870

**REAL ESTATE**

The Home is a 3 Bedroom Brick Ranch having 2 Baths, Kitchen, Dining Room, Living Room with Fireplace, & Den with Fireplace and Window Seat. Located on a Very Nice Lot with Mature Landscaping. The Property has a 1 Car Detached Brick Garage and Pleasant Rear Patio for Entertaining. The Home is in Move-In Condition. Located near the Schools and just a short drive to Susquehanna University. Don't miss this opportunity to purchase this fine home at auction. For showing contact auctioneers.

**Terms:** Real Estate offered at 12:00pm. No Buyer's Premium, 10% down, balance in 45 days. Attorney: Robert Slivinski

<p><b>KENNETH E. HASSINGER</b>                      330 Hassinger Way                      McClure, PA 17841                      (570) 658-3536 : AU-001532-L</p>	<p><b>NEIL A. COURTNEY</b>                      3442 Heister Valley Road                      Richfield, PA 17086                      (570) 539-8791 : AU-002651-L</p>
--	---

[www.hassingercourtney.com](http://www.hassingercourtney.com)

**COMPLETE AUCTIONEERING SERVICE**

## REAL ESTATE AUCTION

**Saturday, June 1, 2013 at 1:00 pm**

12279 Route 35 & 12416 Route 35, Mt. Pleasant Mills, PA, 17853, West Perry Twp. Snyder Co., PA

**2 PRIME, ADJOINING FARMS TOTALING 162+ ACRES**

To be offered in 4 parcels. Buy any Individual Parcel, any Combination, or the Entirety.

**Parcel # 1 (12279 RT. 35): 70.4 Acres.** The Acreage is 34+- Acres Tillable, 7+- Acres Pasture, & 29+- Acres Woodland. Located on the Property is a 2 Story 4 Bedroom Home, completely Remodeled in 2000 with the first level featuring a New Oak Kitchen, Dining Room, Spacious Living Room, Master Bedroom, Quaint Breakfast Nook, Southern Exposure Glassed Sun Room, Full Bath, & Laundry The Second Level also has 3 Bedrooms and a Full Bath. Extras include: Large Basement with At-Grade Entrance, Lower Level Office, Central Air, & New Plumbing, Electrical and Furnace. Located on the Property is a Large Bank Barn with Attached Straw Shed, a 48' x 64' Shop having Concrete Floor with Center Grate Drain, Water, Electric, Heat, 14' x 16' & 16' x 16' Overhead Doors. Also on the property is a Small Workshop, 1 Car Garage, Carport, & Misc. Outbuildings.

**Parcel #2: 27.2 Acres.** The Acreage is Tillable and has approximately 1,150' of Frontage on Rt 35 for easy access.

**Parcel #3: 14.3 Acres.** The Acreage is Tillable and has Southern Exposure with Great Long Views.

**Parcel #4 (12416 Rt. 35): 50.1 Acres: Private Horseman's Paradise.** The Acreage is 41 Tillable and the balance in Pasture. The Property has 16 Acres of Horse Safe Fenced Pasture, divided into 7 Paddock. Located on the Property is a 1800's Log Home which was totally Remodeled in 2007 with New Hickory Kitchen complete with Stainless Steel Appliances, 1st Floor Hardwood Floors, located on the First Level is a Full Bath, Family Room, Laundry Room, & Rustic Wood Foyer. The Second Level has 4 Bedrooms and a Large Walk-In Closet. The Home has New Roof, Electrical, Plumbing, & Windows. Spacious Front Wrap-Around Porch with Southern Exposure and Long Country Views. The Property has a 65' x 150' Indoor Riding Arena with 9 Stall Horse Barn built in October of 2007. This Facility contains (9) 10'x10' Box Stalls, Wash Rack, Tack Room, Sawdust storage, Feed Alley, Observation Room, and Overhead Hay Storage. Indoor Arena Riding Area is 65' x 120' with Sand Footing, Partial Curtain Sides for ventilation, and has Large Access Doors. 16' Eaves allow adequate headroom for jumping practice and storage of modern equipment. Also Located on the Property are a 45' x 70' Bank Barn, remodeled in 2012 with New Roof, New Sliding Doors, and 35' x 70' Lean-to Addition for Truck and Trailer Storage. Lower Level has 7 Oak Box Stalls with Galvanized Fronts and Dividers, a Spacious, Insulated Tack Room, Sawdust Bin, and available Power Ventilation. Additional features are an 80' x 180' Outdoor Riding Arena and abundant On-Site and Local Trail Riding right out of the Barn, and Unlimited Views of the Valley below. This Facility is currently used as a Boarding and Training Facility, and will be perfect for anyone interested in setting up their own Private Farm or Training Program. If horses are not in your plans, this would make an excellent set up for beef cattle or other livestock enterprise.

Don't miss this Opportunity to purchase these Move-in condition Properties. Parcels 1 thru 4 will be offered individually, any combination, or in their entirety. Contact auctioneers for a showing of these Fine Properties. Very Motivated Sellers. Terms: No Buyer's Premium. 10% down Balance in 45 days. Broker participation offered at 2%. Attorney: Ax, Runkle, & Hudock, 570-837-0086

<p><b>KENNETH E. HASSINGER</b>                      330 Hassinger Way                      McClure, PA 17841                      (570) 658-3536 : AU-001532-L</p>	<p><b>NEIL A. COURTNEY</b>                      3442 Heister Valley Road                      Richfield, PA 17086                      (570) 539-8791 : AU-002651-L</p>
--	---

[www.hassingercourtney.com](http://www.hassingercourtney.com)

**COMPLETE AUCTIONEERING SERVICE**

## PUBLIC AUCTION

**Saturday, May 4, 2013 at 8:30am**

Selling Tools, Equipment, & Households for the Estate of Bobby Royer, 24 Mountain View Road, Winfield, PA 17889

**DIRECTIONS:** From Middleburg take New Berlin Road and continue to just before bridge into New Berlin. Auction on the left.

**EQUIPMENT & TOOLS**

2005 Ford Explorer XLT (12:00pm); Ford CM 224 4WD Drive Tractor w/5 Foot Front Mower and other Attachments; Kawasaki 610 Mule 4X4 w/Box; Cushman 3 Wheel Mower; P.J. Traylor, 5X9; JD 185 Hydro Lawn Tractor; 3 Pt. Sprayer; 2 Sickle Bar Mowers; 3 Golf Carts; 8 Hp Massey Ferguson Lawn Tractor; Hobart 187 Mig Welder; Pull Sprayer w/Motor; Forks & Backhoe for Gehl Skid Loader; 5 & 7 Ft Snow Blade; 4 Ft. Brillion Sickle Bar Mower; Wheelbarrow Type Cement Mixer; Napa Steam Pressure Washer; Elec Tripod Hoist; Shop Press; Generator; Trash Pump; Mechanic Cycle Lift; Reddy Heater; Floor Jacks; Elec. Chain Saw For Log Homes; Air Compressors 110 & 220; Horizontal and Vertical; Hydraulic Cylinders & Valves; Golf Cart Clutches; Grizzly 640002 Metal Lathe; Grizzly G1006 24" Drum Sander; 12" Planer; Jointer; Ludell Wood Lathe; Rolling Molding Rack; Roller Track; 4" Grinders; All kinds of Air Tools; Air Hose Recoil; Porta Power; Chain Saw; Drill Presses; Belt & Disc Sanders; Table Saws Sm. & Lg. One with Visimer Ext & Guide; Cut Off Saws; Radial Arm Saw; Creeper; Winches; Vises; Band Saws; Biscuit Machine; Mortise machine; Drill Jig; Dove Tail Jig; Plunge Router & More; Dremels; Chicken Barbequer; Asst. of Clamps; Man Type Post Hole Digger; Wood Work Bench; Welding Table; Lawn Mowers; Pickup Box; 275 Fuel Tank & Electrical Pump; Asst. of Motors; & Others; Lots and Lots of Tools Hand and Electric...

**HOUSEHOLD AND COLLECTIBLES**

Fridge w/ Ice & Water through Door; Washer & Dryer; Smooth Surface 30" Elec. Range; Wood/Coal Space Heater; Apt Size Fridge; Apt Size Stove; Dehumidifier; Air Conditioners; Wringing Washer; Microwave; Sunbeam Mixer and Other Sm. Appliances; 4 Pc. French Provincial Bedroom Suite; Hall Trees; Nursing and other Rockers; Chest of Drawers; Dining Table Lift Chair Double Recliner; Twig Stand; Modern Dry Sink; Sofa & Chair; Lined Oak Bedroom Suit; Heavy Wooden Bench and Others; Bed Lift; Double Bed; Jadeite Bowls; Corning Ware; Clubware; Iron Bed; End & Coffee Tables; Asst. Of Lamps; Oak Chest of Drawers; Holiday Decorations; Wood Potty Chair; Child's Roll Top Desk; Wards Sewing Machine; Bedding And Towels; High Chair; TV Stand; TVs; Kero Lamp; Lincoln Style Caned Rocker; Stack on Elite Gun Safe; Longaberger Basket '92; Horse Blanket; McCaskey Cash Register; Upright Piano; Doll Carriage; Lots of Dolls; Doll Crib; Sad Irons; Wash Board; Step Stools; Robot Vac; Keyboard Organ; Piano Rolls; Steller 7X50 Field Glasses; Fountain of Youth Motion Light; Tricycle; Electric Roaster; Stainless Grill; Smoker; Hoosier Style Cabinet, Fair; 6 Ft. Folding Tables; Swing in Frame; Globe; Office Desks & File Cabinets; 3 Motorized Wheel Chairs: Mart-Cart, Merts, & Victory

<p><b>KENNETH E. HASSINGER</b>                      330 Hassinger Way                      McClure, PA 17841                      (570) 658-3536 : AU-001532-L</p>	<p><b>NEIL A. COURTNEY</b>                      3442 Heister Valley Road                      Richfield, PA 17086                      (570) 539-8791 : AU-002651-L</p>
--	---

[www.hassingercourtney.com](http://www.hassingercourtney.com)

Celebrating our new office

500 Market St Lewisburg

## HOME EQUITY LOANS

**1.99%<sup>Rate</sup> 2.28%<sup>APR\*</sup>**

**Mifflinburg Bank & Trust**  
 Your Community's Trusted Financial Resource

Ph: 570-966-1041 / 888-966-6282

\*Annual Percentage Rate accurate as of publication date. Minimum loan \$10,000, new money only. Subject to individual credit approval. Limited time offer.

Member FDIC



# Congenital Heart Disease Screenings Makes Early Detection Possible at Evangelical's The Family Place



**LEFT: Sharon Hixson, RNC, The Family Place, waits for the oximeter on baby Julius' right hand to tell her if he is at risk for congenital heart disease. RIGHT: The oximeter used to measure the amount of oxygen in a newborn's blood simply wraps around the right hand or foot and sends an oxygen reading to a small piece of equipment on a traveling cart. The test can be done at the mother's bedside and can indicate if there is a concern for congenital heart disease within 24-48 hours after birth.**

For new parents, reassurances their newborn is healthy provide comfort and at The Family Place, the obstetrics unit of Evangelical Community Hospital, those reassurances come through a series of health screens.

One such screen is for congenital heart disease, a condition that is found in approximately 7,200 newborns each year. Through a simple test, cardiac defects can be detected in 24-48 hours after birth, much sooner than the typical four or five days when symptoms normally start to present.

Using pulse oximetry, a non-invasive method of monitoring oxygen in blood cells, nurses in The Family Place can painlessly identify whether infants have symptoms of seven critical congenital heart defects.

Robbie Ravert, a 40-year Registered Nurse certified in inpatient obstetrics at The Family Place said, "The screen is painless and gives us the opportunity to address issues through early detection; it doesn't necessarily detect all cardiac defects, but it can identify an issue if there is one much earlier than in the past. These screens are an excellent way of providing reassurance to new parents while at the same time supporting state programs that are put in place to protect newborns and promote well-being."

Done at the mother's bed-side on an awake and calm newborn, nurses place an oximeter or hemoglobin reading device on the right hand and take a reading, then move to either foot and take another reading. The hands and feet are well-oxygenated areas of the body. The oximeter shows how much oxygen is being transported to all areas of the body.

If the screen indicates the newborn has lower than normal levels of oxygen in their blood, or a positive reading, a cardiologist is called in to do a work-up and additional tests to get a better idea of what may be the cause. This is often done in consultation with a pediatrician.

The congenital heart disease screening is one of a panel of tests conducted on newborns including a hearing and a metabolic blood screen. All of the tests are mandated by the Pennsylvania Department of Health but parents are given the option to decline after being educated on the purpose of the screen.

So far Evangelical's The Family Place has seen no positive congenital heart disease screens on their newborns.

# Layton Beats Erdley At Port Royal

Bad Chad Layton of Harrisburg overcame the odds Saturday night at Port Royal Speedway to pocket the 25-lap 410 sprint car feature after a duel with Mike Erdley that came down to the checkered flag.

In the late model feature, invader Jeff Rine of Danville wired the field for his 10th career victory at the oval while elsewhere Logan Wagner made his moves early to lead the 305 sprint feature and seal his victory.

Layton and Danny Lasoski started on the front row of the sprint feature and Layton took the lead immediately when the green flag fell over fourth starter Erdley as the pair shuffled Lasoski to third.

The race entered the backmarkers on the fifth circuit but shortly after a caution flag slowed the pace, regrouping the field with six away.

Layton dropped the hammer when action resumed, getting away from Erdley as Lasoski raced third and last week's winner Doug Esh raced into fourth from his ninth starting spot.

The leaders again entered the rear of the field, lapping cars on the 11th circuit and that's when Erdley began trying to cut down Layton's leading distance by slicing across the bottom of the corners.

But still, Layton didn't miss a trick in traffic, staying just free enough of Erdley as the race wound down, appearing headed easily to his ninth career checkers at the track but that was before the race hit the two to go point and he started to develop a right rear flat tire as well.

It was then that Doug Esh and Cliff Brian brought out the red flag after contact in the fourth turn resulted in fuel being spilled onto the track.

And when the race resumed, Erdley seemed to have new life, first trying a move low in the first and second turns before tucking in behind Layton as the pair navigated through three and four, headed for the white flag.

And then when Layton went low into the first corner, Erdley rolled the top to perfection and whisked by exiting the second corner with the lead.

However, a stopped Dave Hahn moments later in the second corner brought out the caution flag instead of the checkers and the one lap dash to the finish found Layton back in front for the new green, taking advantage of his reprieve thanks to the yellow.

Layton made his car wide heading into the first corner, leaving Erdley to try another run around the top that put him to the leader's inside as the pair raced down the backchute with Layton continuing to play defense.

Erdley backed out of the inside run as Layton moved lower on the track and a mad run around the top of turns three and four by Erdley found him swerving to the inside of Layton as the pair took the checkers with Layton holding on for the victory.

"Nothing I wouldn't have done if I was in his place," Erdley said after the race of Layton's defense on the final restart.

Erdley finished .297 seconds behind followed by Lance Dewease, Lasoski and 13th starter Rick Lafferty.

Sixth through 10th went to Blane Heimbach, Davey Sammons, Pat Cannon, Joey Hershey and Mike Wagner.

Heats for the 25 cars in competition went to Layton, Lasoski and Ryan Bohлке.

Rine started second in the 20-lap late model main and took his \$1,500 payday after wiring the field although 12th starter Matt Parks tried to sneak in for the lead after taking second on the ninth circuit.

For several consecutive laps Parks sliced into Rine's advantage before Rine again started opening up his lead during the last five circuits.

Rine's pace was slowed only once with seven laps completed and the front two finishers crossed the line some 5 seconds ahead of the rest of the field.

A rewarding run by Terry Naugle placed him third at the finish followed by Mike Lupfer and 14th starter Tim Wilson.

Sixth through 10th went to Jim Bernheisel, Bryan Bernheisel Steve Campbell, Chad Hollenbeck and Dylan Yoder.

Heats for the 33-car field went to AJ Hoffman, Lupfer, Jim Bernheisel and Campbell. The consolation race went to Jim Yoder.

Mark Watkins took the lead at the start of the 20 lap 305 sprint main with Kody Lehman in tow.

Logan Wagner started eighth in the field and was already up to third on just the first circuit.

Wagner was second a lap later and when a caution flag regrouped the field with four laps completed, it was all he needed to take control.

The second-generation driver made virtually all his passes skating around the top groove of the racetrack and was never headed once at the front of the field.

It was his third career 305 sprint win at the oval.

Watkins finished a strong second, as did Lehman in third.

Fourth and fifth went to Tyler Bear and Lance Newlin, respectively.

Sixth through 10th went to Roger Irvine, Eric Parker, Jason Bergstresser, Ed Newhauser and Ian Detweiler.

Heats for the 32 car field went to Paul Snyder, Mike Wagner II., Lehman and Watkins with Shawn Kirkpatrick taking the consolation race.

**April 20, 2013 Feature Finishes: 410 sprints:** 1. Layton, 2. Erdley, 3. Dewease, 4. Lasoski, 5. Lafferty, 6. Heimbach, 7. Sammons, 8. Cannon, 9. Hershey, 10. Wagner. **Late models:** 1. Rine, 2. Parks, 3. Naugle, 4. Lupfer, 5. Wilson, 6. J. Bernheisel 7. B. Bernheisel, 8. Campbell, 9. Hollenbeck, 10. D. Yoder. **305 sprints:** 1. L. Wagner, 2. Watkins, 3. Lehman, 4. Bear, 5. L. Newlin, 6. Irvine, 7. Parker, 8. Bergstresser, 9. Newhauser, 10. Detweiler, 11. M. Wagner II., 12. Joe Zapp, 13. George Riden, 14. Jeff Miller, 15. Nathan Gramley, 16. Andrew Hake, 17. Shawn Kirkpatrick, 18. Zach Newlin, 19. Jeff Schall, 20. Jim Kennedy, 21. Jake Waters, 22. Reed Thompson, 23. Scott Ellerman.



## 2 DAY AUCTION, SATURDAY, MAY 4 @ 8:00 AM

Located South of West Milton Exit off of Route 15 turn West onto Col. John Kelly Road (near Bierly's Meats) Travel Approx. 2.9 Miles to 2930 Col. John Kelly Rd., Lewisburg, Union Co., PA.

**HOUSEHOLD GOODS (selling at 8:00):** Uph. Chair; Quilt Rack; Cosco Step Stool; Roasters; 3 pc. Cutco; Round Card Table & Chairs; 6 qt. White Mtn. Freezer w/Jack; Comm. Stainless Serv. 12 Silverware; Cookware; Pyrex; 100+ Cookbooks; DVC, CD & VCR Tapes; Tupperware; Jewelry Boxes; Games; Blue Corelle Dishes; Igloo Thermos; BBQ Pit Slow Cooker; Sm. Electrical Appliances; Luggage; New Vera Bradley Pocketbookers, Purses & other Designers and More.

**4 X 4 TRACTOR, EQUIPMENT, MISC.:** 8454 Cub Cadet 4 x 4 Tractor w/Roll Bar & 642 Bucket, only used 55 hrs; 7' Bush Hog Blade w/3 pt. Hitch; 7' Bush Hog Mower; 16' Wide Track Kicker Wagon; Walking Plows; 5' Sickle Bar Horse Drawn Mower w/Tongue; 2135 Cub Cadet HDS Riding Lawn Mower, 545 hrs.; 2 Rotary Mowers; Weed Eaters; Rear Dig Rototiller; Snow Fencing; 8' & 6' Werner Ladders; Wooden Ladders; Valmont Cage; Corn Sheller; Shutters; Lawn & Garden Tools; Dog House; Dbl. Seat Bike; Toboggan; Red Bricks; Pedal Grind Stone; Assortment of Lumber and More.

### HORSE DRAWN VEHICLES (Selling @ Noon):

Portland Cutter, manuf. By John Gutelius & Son, Mifflinburg; Road Cart or Sulky - Unique Seat (Stud Cart); Yellow 2-horse Spring Wagon, easy rider springs; Swell Body or Albany Cutter w/Org. paint, Shafts off-set to right; Sm. Hand Wagon w/Pulling Tongue (new seat); Racing Sleigh; World Buggy Co. Surrey, Green w/Red Wheels, Fenders, Shafts, no top; J.B. Armstrong - Guelph, Ontario, Canada Sleigh (front seat movable for either driver or children); Four Passenger Black Sleigh; Millville Wagon w/ Tongue and Extra Bolster; D.B. Miller Sleigh, Albany Cutter; D.B. Miller Buggy w/one seat, top & shaft; 4 Passenger Albany Cutter; Farm & Family Sled, 2 seats (one higher than other); Hand Wagon w/Brake - Some New Spokes and New Rims; Portland Cutter w/Springs, The Flint Buggy Co. Flint, Michigan (red shafts); Child's Sleigh, pony drawn, 2 seat, orig. paint; 4 Passenger restored sleigh, red, front jump seat; Side Spring run-about 2 passenger open buggy; Buggy box & gears, no springs, no wheels; Pull Flower Cart; Wheelbarrows; Bob Sled Running Gears;

**LOCAL POSTCARDS & BOOKS:** Lewisburg, Mifflinburg, Hartleton, Laurelton, Swengle, Millmont, New Columbia, West Milton, New Columbia RR & More; Lg. Collection of Pa. & Local History Books; 6 Early New Berlin Books;

### SATURDAY, MAY 11 @ 8:00 AM

**CROCKERY:** Blue Dec. Moore & Nicholas, Wmspt.; Moyer, Harrisburg Jug w/Blue Decs; Leighton, Portsmouth, NH Jug w/Blue Decs.; Cowden Wilcox, Harrisburg w/Blue Floral; Blue Dec. Crocks; 3 gal. Sipe & Son Crock; Butter Crock & Others.

**COVERLETS & QUILTS:** 1849 Benjn Angstad, Lewisburg, Pa.; 1837 Emanuel Ettinger, Aronsburg, PA., 1845 WMLowmiller, Muncy Boro, Ly. Co.; 9 Early Quilts; Braided Rugs;

**PRIMITIVES, GLASSWARE & CHINA:** 4 Spinning Wheels; Flax Wheel; Yarn Winder; Studded Star Peg Hat Rack; Wicker Baby Buggy; Buggy Dash Light; Early Hearse Oil Lights; 4 Finger & Hanging Kerosene Lights; Dietz Light; Carbide Lights; Elk Wildlife Gone w/the Wind Light; Hanging Light; Blk. Dec. Iron Hanging Elect. Light; Smith & Jagues, Tree Rivers Sole Manf., Michigan Buggy Carrying Light; Brass Sleigh, Saddle, String, Shaft & School Bells, some sets; Express Wagon; Slaw Cutter; Num. Brass Laddles & Cast Iron Forks; Hay Forks; Apple Butter Stirrers; Lg. Apple Butter Kettle; Brass Bed Warmer; Brass Buckets; Star Pattern Studded Hat Rack; Cast Iron Mush Pots & Fry Pans;; Boot Jack; Fireplace Stand/Hangers, Toaster, Trammel, Tin Fireplace Oven; Buttock, Hickory, Rye Straw & Other Baskets; 2 Butter Bows, Churn, Prints & Paddles; Rect. Butler Working Bowl; Sm. Candle Mold; Tinware; Graniteware; Wooden Block Skates; Powder Horn; 3 Coffee Grinders; Counter Scales w/Brass Tray & Weights; Tin Packs; Oval & Misc. Picture Frames; Lwb. Buffalo Flour Mill; Tin, Wooden & Plastic Doll Houses; Doll Cradles; Childs Sled & Rocker; Flat & Dome Top Trunks; Quilting Rack; Sm. Chest; Candle Box; Tin Foot Warmer; Towel Rack; Lionel Train Set; 45 Records; Adv. Tins; Reeds Tob. Co. Milton, Pa Tin; Children Books; Bisq. Kid Skin Dolls & Others; 06' New Berlin Cookie Cutters; Old Cookie Cutters; Linens; Cake Mold; Flow Blue Tea Pot, Pitcher, Plates, Meat Platter; Spongeware Pitcher & Dishes; Soft Paste Tea Pot; Ironstone Soup Tureen; Staffordshire Sandwich Plates; China Veg. Dishes & Meat Platters; Serv. 11 KPM Germany Set of Dishes; Copper Lustre Creamer & Cups; 1780 Bakers Cocoa Dish; 7 Rose Plates; Compotes; Glass Baskets & Cake Stands; Vinegar Cruets; Shirley Temple Cup, Pitcher, Bowl; Pat. Celery & Spooners; Fostoria Plate; Cut Glass 7 pc. Water Pitcher Set; Cracker Jar; Bowls; Sugar/Creamer; 6 Glass Ped. Salt Dips; Misc. Pressed Glass; Northwood Cobalt Blue Carnival Glass Dish; Frosted Stag & Buffalo Glassware; Turkeys & Chicken on the Nest; Num. pcs. of Fiestaaware; 1910 J.H. Overdorf Carroll, Pa. Plate; Gately & Fitzgerald Supply Co., Harrisburg, Pa. Plate; 100+ Souvenir/Flash Glass of Lwb., U.C. Fair, Gettysburg, Scranton, Northumberland, Lock Haven, Harrisburg & Individuals Names & Dates & More.

**MUZZLELOADERS (selling @ 11:00):** 1884 US Springfield Percussion, Brass Inlaid w/Bayonet; Guyer Percussion Muzzleloader (w/set triggers); P.Kockle, Lwb. Percussion Rifle w/Patchbox, (set triggers); US Springfield Hammer, Muzzleloader Rifle;

**ANTIQUE FURNITURE & APPLIANCES:** 12 Pane Cherry Dutch Cupboard; 12 Pane 2 pc.Cherry Corner Cupboard w/Bracket Legs; 12 & 16 Pane 2 pc. Cherry Corner Cupboards; (all w/orig. glass); Pine Steppack Dry Sink; Cherry Grandfathers Clock w/Floral Face; Cherry School Master Desk/Bookcase w/Pigeon Holes; Walnut Open Front 5 Shelf Bookcase; Pine Farm Table w/13 Boards; Pine Farm Table w/5 Boards; Walnut Dropleaf Table; Refinished Pine Fruit Cupboard; 3 pc. Walnut White Marble Top Bedroom Suite; 6 Green Plank Bottom Chairs; 6 Dec. Fruit Plank Bottom Chairs; 6 Brn. Plank Bottom Chairs; 4 Violin Back Plank Bottoms Chairs; 6 Balloon Back Chairs & Rocker; 6 Cane Bottom Chairs; Blk. Dec. Plank Bottom Rocker; Pine Dovetailed Blanket Chest & Others; Tiger Maple Blanket Chest w/Glove Box; 4 Drawer Birds Eye Maple Stand; 4 Drawer Pine Chest of Drawers; Pine Paneled Flour Chest; Oak Clothes Tree; Walnut Baby Cradle; Treadle Sewing Machine; Rope, Canopy, & Other Beds; Dec. Nursing Rocker; Tiger Maple & Walnut One Drawer Stands; Mustard Paint Arrowback Loveseat; Tilt Top Stand; Church Pew; 18 cu. SS G.E. Refrigerator w/Freezer on Bottom; GE Washer & Dryer; Almond 18 cu. Upright Frigidaire Freezer and More

**OWNER: Donna M. Slear  
The Leta Gary Slear**

**ATTORNEY: Terry Light , (570) 523-3241**  
**AUCTIONEERS:**Wayne M. Hess, AU-000411-L (570) 922-1206  
Lori Hess Lauer, AU-002854-L (570-966-2512). [www.auctionzip.com](http://www.auctionzip.com)  
**AUCTIONEERS NOTE: The Slears have collected top quality antiques for years. Don't miss this remarkable auction.**  
owners & Auctioneers Not Responsible for Accidents.  
Food Stand All Verbal Information Day of Auction Takes  
**Precedence Over Written Advertisement**  
**Clip and Save Clip and Save Clip and Save**

## COMPLETE AUCTIONEERING SERVICE PUBLIC AUCTION Wednesday, May 22, 2013 at 1:00 pm

Real Estate & Office Equipment from the Former Law Office of John R. Moore, 719 North Market Street, Selingsgrove, PA 17870



**REAL ESTATE**  
The Real Estate is currently setup as a Law Office with the First Level having 4 Offices, Conference Room, 3 - 1/2 Baths, & Kitchenette. The Second Level has 4 Offices and a Full Bath. The Third Level has 1 Finished Room and a Full Bath. Located on

the Property is a 2 Car Detached Garage. This Property affords many Opportunities as a Several Office Complex or Office and Home with separate electrical metering. The property has Central Air and Vac and Gas Hot Water Heat. The Parking Area is Paved for Off-Street Parking. Contact auctioneers for showing.

**Real Estate Terms:** 10% Down, Balance in 45 days. Real Estate offered at 1:00pm.

Be prompt as REAL ESTATE SELLS FIRST, followed by Office Equipment and Furnishings.

**KENNETH E. HASSINGER**  
330 Hassinger Way  
McClure, PA 17841  
(570) 658-3536 : AU-001532-L

**NEIL A. COURTNEY**  
3442 Heister Valley Road  
Richfield, PA 17086  
(570) 539-8791 : AU-002651-L

[www.hassingercourtney.com](http://www.hassingercourtney.com)

## COMPLETE AUCTIONEERING SERVICE REAL ESTATE AUCTION Friday, May 17, 2013 at 6:00pm

A Fisherman's Paradise. 450 Bingaman Lane, Millmont, PA 17845 Cottage with Frontage on the Penns Creek, a World-Renown Trout Stream.



**COTTAGE WITH FRONTAGE ON THE PENNS CREEK**  
This property affords Endless Recreational Potential. Located on the Property is a 2 Story Cottage/Home. On the First Level the Cottage has New Oak Kitchen, Glassed Sun Room, & Large Dining Room overlooking the Penns Creek. The First Level also has a Quaint Breakfast Nook, Bathroom, and Large Glassed Living Room with lots of Closets, as well as an Enclosed Rear Porch. The Second Level has 2 Bedrooms with Yellow Pine Wooden Floors. The Property has Propane Heat and Central Air Conditioning and will be sold with Furnishings. Also located on the Property are a Roofed Picnic Area, Carport, and a Storage Shed. Don't miss this Opportunity as seldom are there properties with Penns Creek Frontage available. Join us for an Open House, Friday, May 3rd, from 4:00pm to 8:00pm, Saturday, May 4th from 10:00am - 6:00pm, & Sunday, May 5th, from 1:00pm - 5:00pm.  
**TERMS:** 10% Down, Balance in 45 days. Attorney: Ax, Runkle, & Huddock, 570-966-3006. Broker Participation offered at 3%.

**KENNETH E. HASSINGER**  
330 Hassinger Way  
McClure, PA 17841  
(570) 658-3536 : AU-001532-L

**NEIL A. COURTNEY**  
3442 Heister Valley Road  
Richfield, PA 17086  
(570) 539-8791 : AU-002651-L

[www.hassingercourtney.com](http://www.hassingercourtney.com)

# HORNING'S GREENHOUSE

570-837-5316

1/2 Mile South of Penns Creek on Rt. 104

## MULCH

BAGGED OR BULK

MUSHROOM SOIL

NATURAL BARK MULCH

RED AND BLACK HARDWOOD

Closed Sunday

# 16TH ANNUAL CONSIGNMENT SALE

Benefits the Gratz Area Fire Company #1 and Amish Parochial schools of Upper Dauphin County  
Held at Gratz Fairgrounds, 601 E. Market Street, Route 25 Gratz, PA 17030  
Directions From I-81, exit 112, take 25 East to Gratz  
From Millersburg Route 25 East to end of Gratz. 20 acres of parking at fairgrounds!

**ALL CONSIGNMENTS MUST BE RECEIVED BEFORE GATES CLOSE ON FRIDAY AT 4:00PM THERE WILL BE NO EXCEPTIONS**

**Friday - May 3, 2013 - Horse Sale 6:30 PM**  
also that Friday night- Tools, Nursery Stock, Flowers, Crafts, Groceries 6:00 PM-9:00 PM  
**Saturday - May 4, 2013 - Begins at 8:30 AM**  
AGAIN FOR 2013 - Campsites will be available (dry camping). Register on-line at [www.gratzfirecompanysale.com](http://www.gratzfirecompanysale.com)

For Complete Sale Information: 717-365-3043 • [www.gratzfirecompanysale.com](http://www.gratzfirecompanysale.com)

**Great Food Available - Friday, May 3 - 12:00 PM-9:00 PM**  
All-You-Can-Eat Buffet Style- baby-back ribs, beef ribs, chicken wings, delmonico steaks with full salad bar. (Available as carry-out) Also the Gratz Fire Company stand will be open all day.

**Great Food Available- Saturday, May 4 - 6:00 AM-4:00 PM**  
All-You-Can-Eat Breakfast Buffet 6-10AM

We are offering an all-you-can-eat-all-day-Saturday meal ticket (breakfast buffet included) for \$30-Allows you full access to the Gratz Fire Company Food Stands. BBQ chicken, sausages, hamburgers, hot dogs, subs, french fries, donuts, fry pies, homemade ice-cream, all types of drinks, plus much, much more...Bring your appetite!!!

**Auction Schedule - Saturday May 4th**  
**REMINDER SALE STARTS AT 8:30AM SHARP!**

8:30AM.....Nursery Stock • Small Items in Quilt Building • Crafts in Building • Small Tools	10:00 AM.....Children's Toys • Appliances
9:00AM.....Mowers & Lawn Equipment • Small Farm Related Items Followed by Farm Equipment • Antiques • Flowers	11:00AM.....Used Furniture • Log Furniture Followed by Lawn Furniture
9:30AM.....Building Materials	12:00 Noon.....Large Tools • Storage Sheds • Carriages • Small Animals
10:30AM.....Miscellaneous Rows	
11:30AM.....Tack	
1:00PM.....Vehicles (Notary will be present)	

**ALL CONSIGNMENTS MUST BE RECEIVED BEFORE GATES CLOSE ON FRIDAY AT 4:00 PM THERE WILL BE NO EXCEPTIONS**

**DONATED ITEMS AND GOOD QUALITY CONSIGNMENTS WANTED**  
We are looking for farm equipment, heavy duty or light duty construction equipment, tools, household goods, crafts, quilts, antiques and any other worthy merchandise will be welcomed. The sale committee reserves the right to reject any consignments.  
Receiving Hours are on Wednesday and Thursday from 8:00AM to 8:00PM and Friday 7:00AM to 4:00PM

**ALL CONSIGNMENTS MUST BE RECEIVED BEFORE GATES CLOSE ON FRIDAY AT 4:00 PM THERE WILL BE NO EXCEPTIONS**

All items purchased or consigned must be removed by Tuesday May 7, 2013 by 7:00PM. To pick up items you must enter at the east gate and leave at the west security gate. To leave you must show security officials your tickets that you received from the clerk. Gates will open Saturday at 11:00AM for item removal. Vehicles are restricted to the stone driveway which runs parallel to route 25. No vehicles on grass until after 3:00PM. To pick up items on Monday and Tuesday, hours will be 8:00AM to 7:00PM and you should be contacted from clerk to remove items.  
Times Are Approximate And Subject To Change • We Will Be Selling With Approximately 15 Auctioneer Groups On Saturday

**REMEMBER NEXT YEAR'S CONSIGNMENT SALE IS MAY 2ND AND 3RD, 2014!**  
Remember to visit our web-site anytime for full up to the minute sale details  
[www.gratzfirecompanysale.com](http://www.gratzfirecompanysale.com)

**KENNETH E. HASSINGER**  
330 Hassinger Way  
McClure, PA 17841  
(570) 658-3536 : AU-001532-L

**NEIL A. COURTNEY**  
3442 Heister Valley Road  
Richfield, PA 17086  
(570) 539-8791 : AU-002651-L

[www.hassingercourtney.com](http://www.hassingercourtney.com)



# Legals & Classifieds

## LEGALS

### Request for Bids

The SUN Area Technical Institute, 815 East Market St., New Berlin, PA, is accepting bids for Asbestos Abatement. Specifications are available at the SUN Tech Web site [www.sun-tech.org](http://www.sun-tech.org) or by calling 570-966-1035. Bids will be opened 5/6/13 at 2:00 p.m. and awarded at the 5/16/13 JOC Meeting.

### EXECUTOR'S NOTICE

ESTATE OF Eleanor M. Clark, a/k/a Eleanor Meredith Clark, a/k/a Eleanor Clark, late of Lewisburg Borough, Union County, Pennsylvania. Any person or persons having claim against or indebted to the estate present same to William Bollinger, 1272 Cochection Turnpike, Tyler Hill, PA 18469. Sally N. Rutherford, Esq., 921 Court St., Honesdale, PA 18431, Attorney for the Estate.

### NOTICE OF INCORPORATION

NOTICE IS HEREBY GIVEN that NORTH BRIDGE BUSINESS SOLUTIONS, INC. has been incorporated by the filing of Articles of Incorporation on March 28, 2013, with the Corporation Bureau of the Pennsylvania Department of State under the provisions of the Business Corporation Law of 1988.

THOMAS C. CLARK  
Attorney for Corporation  
P.O. Box 57  
431 East Main Street  
Middleburg, PA 17842

### NOTICE:

The 2013-14 proposed Budget, for the SUN Area Technical Institute, was tentatively adopted by the Committee 12/20/12. Final adoption is anticipated at the 5/17/13 meeting. The Budget is available for examination at the office of the Business Manager, 815 E. Mkt. St., New Berlin, PA 17855.

## CLASSIFIEDS

### Help Wanted

Positions available: Auto Body Tech, Painter, Camper Collision repair, Estimator, mechanical (truck exp. please also apply). \$2,000 sign on Bonus (after probationary period) Noaker's Auto Body & Sales LLC. 20 min. from Harrisburg in Duncannon. 1 employee in 2003 to 24 currently. 23 DRP's insurance agreements. 18,000 sq. ft. facility. Compensation includes Medical, Dental, Vision, Retirement contribution, Vacation, Restaurant usage, Suite Senator baseball usage and more. Go to [www.noakersautobody.com](http://www.noakersautobody.com) and apply. Or call Harry @ 717-834-6500 EEO Employer

Experienced Pizza Maker for new business in Selinsgrove. Call (570) 259-1952.

Foster parents needed! FCCY is looking for people to help meet the growing demand for foster homes. Those interested in becoming foster parents call 1-800-747-3807. EOE.

Management Position Available: The Snyder County Prison is currently accepting resumes for a full-time Watch Commander. This is a management position requiring a minimum of three years of responsible law enforcement, supervisor, or management experience. Successful candidate must be available to work all

shifts. Please send resume to: Snyder County Board of Commissioners, PO Box 217, Middleburg, PA 17842.

Drivers: Home Weekends! Pay up to \$4.00 per Mile. Chromed out Trucks with APU's. 70% Drop & Hook. CDL-A, 6 Mos. Exp. 888-406-9046 or Apply @ SmithDrivers.com.

### For Rent

For Rent: One bedroom downstairs apartment in McClure includes heat & w/s. No pets & no smoking, security deposit required, \$400.00 a month. Call (570) 658-2015.

### For Sale

For Sale: RH Golf Clubs w/bag, \$50; 305 Chevy Heads, redone out to 202, \$600; New lifters and rods, still in box, \$100. Call (570) 809-9013.

For Sale: Locust fence post in various lengths, many to choose from \$1.00 per foot. Call (570) 837-3192.

For Sale: '83 4x4 Chevrolet frame with transmission and rear and wagen wheels, 6 lugs. \$400 for all. Call (570) 837-1010.

For Sale: John Deers 314 Lawn garden tractor, 14 hp kohler, 48" cut, hydro, works good. \$650; Craftsman lawn seeder pull behind \$35; Cub Cabert self propelled push mower, 173cc, bagger & side chute \$125. Call (570) 966-9893.

For Sale: blue-green stripes twin sheets; brown sheets twin XL; blue sheets twin XL; full comfort (blue); twin flat & fitted (1 pillow case); twin flat & fitted (2 pillow case); wooden school desk; metal school desk; maxfli golf club and bag \$125. Call Nick at (570) 541-6996.

For sale: John Deere H Tractor 1945 engine completely restored, new paint, front and rear tires, battery, spark plug covers. Must see. \$5,000. Call (570) 837-3150.

For Sale: Sears push lawn mower, self-propelled \$65; antique coffee grinder \$55; 36" used storm door \$25; 48" 6-panel bifold doors, white \$40 each; 36" mirror bifold door \$40; sewing machine \$20; white antique wash stand \$125; PA House oak corner cupboard, h-81" d-20" w-38" \$395; antique oak claw foot farm table/four chairs \$350; garden shovels/rakes; Skil 3" Belt Sander commercial duty 3/4 hp, 3" x 21" belt, like new \$75; Electrolux compac canister vacuum, works good \$25. Call (570) 837-3564.

### Free

Free to Good Home: Two young dogs, mixed breed, great with kids. One male, one female; neutered & spayed, up to date with shots. Includes several leashes, dog grooming/care supplies, kennel and food. My elderly mother's health is declining, and I am taking over as her caregiver. Please call 570-922-4457 if you are interested in adopting two wonderful dogs.

### Yard/Garage Sale

Annual Neighborhood Yard Sales: Thurs., May 2, Fri., May 3, & Sat. May 4, from 8 a.m.-4 p.m. and Sat. 8 a.m.-1 p.m. in Shamokin Dam. Rain or Shine.

Kissimmee Community Yard Sales: May 3 & 4.

Barn Sale: April 26 & 27, from 9 a.m.-3

p.m. Don't miss out. Rt. 104 North, turn right across from L & L Market, onto Salem Church Rd., take first dirt road on your left Tittle Rd., follow signs.

Dressler's Ridge Yard & Garage Sales: May 2, 3, & 4, beginning at 8 a.m. and Saturday 8 a.m.-2 p.m. Rain or Shine.

Multi-Family Yard Sale: April 26 & 27. Turn onto Forest Hill Road at the Mifflinburg Pharmacy, go 1 1/2 miles, left on Roush Road, first house. Rain or Shine.

Middlecreek Community Fellowship Church is having a yard sale on May 3 & 4. MCF is located at the corner of Rt. 522 and Paxton Street, West of Middleburg.

New Berlin Community Yard Sales: May 4.

Yard Sale: April 26 & 27, from 8 a.m.-4 p.m., at 1440 Grand Valley Road, Mifflinburg. Go North on 8th St. to Grand Valley Rd. then left 1 3/10 miles or take Forrest Hill Rd. to Green Ridge Rd. then turn onto 8th st. to Grand Valley Rd. Go right 1 3/10 miles. Watch for signs

Huge Garage Sale: May 3 & 4, from 9 a.m.-4 p.m., on Spruce Hollow Road, Middleburg, 1/2 mile off Kissimmee Road.

Hartleton's 25th Annual Community Yard Sale Day: Saturday, April 27. The money is used to maintain and improve our Community Park.

Garage Sale: at 4730 Route 204, Selinsgrove (Kratzerville area) on April 25, 26, & 27, from 8:30 a.m.-5 p.m.

Yard Sale: Friday, May 3, from 8 a.m.-4 p.m., and Saturday, May 4 from 8 a.m.-1 p.m., in Freeburg. Just off Route 35. Follow the balloons. Food stand. All proceeds benefit the Selinsgrove Area Relay for Life.

Belltown Community Yard Sales: May 3 & 4, beginning at 8 a.m. Rain or Shine

Yard Sale: 599 Longer Road on May 2 & 3, from 8 a.m.-4 p.m.

Huge Yard Sale: May 1-4 at 2947 Pheasant Ridge Road, Lewisburg.

Penn View Christian Academy's Annual Indoor Yard Sale: April 25 & 26. Friday 8 a.m.-4 p.m. & Saturday 8 a.m.-12 noon, in Elementary Gym at the Penn View Christian Academy, Raspberry Street, Penn's Creek.

Huge Moving/Yard Sale: on May 1, 2, 3 & 4, beginning at 8 a.m., at 5413 Buffalo Road, Mifflinburg, PA.

Yard/Garage Sale: May 3 & 4, East of Freeburg, at 3300 Route 35.

Multi-Family Garage Sale: May 3, from 8 a.m.-4 p.m. and May 4, from 8 a.m.-12 noon, at 603 & 604 Winey Ave., Middleburg.

Mifflinburg Annual 10 family Yard Sale: at 2370 Beaver Road, next to Hoover's Bernina on May 3 from 8 a.m.-4 p.m.

Yard & Bake Sale: on Wednesday, May 15th, in the East parking lot from 8 a.m. - 2 p.m., at the St. John's United Church of Christ, 1050 Buffalo Road, Lewisburg.

### Services Offered

Black's Lawn Mowing: Professional, quality mowing and precision trimming. Years of experience, vivid striping and Low PRICES! Lawn care and other services also available. Call (570) 837-0169.

# Union County PASR Awards Two Local Teachers



**TOP: John Letteer and Nancy Bowman had the pleasure of giving a \$200 Educational Grant Awards to Melody Aikey, Speech Therapist at Mifflinburg. Melody will use her money to buy Speech Buddies. BOTTOM: John Letteer and Nancy Bowman had the pleasure of giving a \$200 Educational Grant Awards to Lane Taylor, Elementary Teacher at Lewisburg. Lane will use her grant to purchase Great Books.**

The Union County Chapter of the Pennsylvania Association of School Retirees (PASR) awarded two Union County teachers with \$200 grants as part of the chapter's effort to improve school programs. The awardees for this year were Melody Aikey, Speech Therapist at Mifflinburg, and Lane Taylor, Elementary Teacher at Lewisburg. Melody will use her money to buy Speech Buddies and Lane will use her grant to purchase Great Books.

Speech Buddies are instruments that are used to help students develop good speech articulation habits. These instruments are placed above or below the student's tongue to help them sense the location of the tongue and lips to create the proper sound of specific letters. The use of these instruments has been highly effective in helping students create the proper pronunciation of words as they speak.

The Great Books Program is designed to bring students the best in grade level literature that will stimulate them to read more and enjoy reading as they discuss what they had read with their classmates. Students who are involved in the Great Books Program become independent readers who will experience improved reading comprehension skills, critical thinking skills and writing skills.

PASR is an organization whose membership includes teachers, administrators, counselors, nurses, secretaries, aides, bus drivers, cafeteria workers, and maintenance staff - in short, anyone who is now receiving a pension from the Pennsylvania School

# Join 4-H in Union County

The Union County 4-H Program is open to boys and girls ages 5-18 (as of January 1). In Union County, there are ten different clubs in which a member has the opportunity to join. It is recommended that a member choose to join one or two clubs. Each club has its own dynamics such as meeting time, meeting place, frequency of meetings, and projects it offers.

As part of the 4-H program requirements, a member must complete a 4-H project and keep a record. There are over 200 projects and activities for a 4-H member to choose from. Although there are many projects, 4-H members are encouraged to pick a few projects, and do those projects well; quality, not quantity. Some of our projects include livestock animals, rocketry, arts and crafts, shooting sports, and outdoor adventures.

Our younger members, ages 5-7, are called "Cloverbuds." There are specific projects designed for the Cloverbuds in mind. These projects are non-competitive, age-appropriate, safe, and short-term activities.

We are looking for new members. Those interested in livestock projects, must be enrolled by April 1, 2013. For those interested in non-livestock projects, the enrollment deadline is May 1, 2013.

For more information on the Union County 4-H Program, please contact Jennifer Boop, 4-H Program Assistant, at 570-966-8194 or [jjb459@psu.edu](mailto:jjb459@psu.edu).

Penn State encourages persons with disabilities to participate in its programs and activities. If you anticipate needing any type of accommodation or have questions about the physical access provided, please contact Jennifer J. Boop at 570-966-8194 in advance of your participation or visit.

## BOOMERANG'S

**-Weekday Specials- 6-9pm**  
**Mon. 99¢ Tacos**  
**Tues. Giant Hot Sausage Sandwich & Fries \$3**  
**Steak & Chips \$8**  
**Wed. Cheese Steaks \$2.50**  
**Thurs. Our Original Char Broiled Burgers & Fries \$1 ea.**  
**Open for Breakfast 7:30 am**

**WINGS • SEAFOOD • CHAR-BROILED STEAKS**  
**Rt. 45 - 5 Miles West of Mifflinburg**  
 Hrs: Mon.- Sat. 7:30 am - 2:00 am; Sun. 11:00 am - 2:00 am  
**(570) 922-1232**

# DINING GUIDE

## MIFFLINBURG MOOSE

437 Chestnut St. Mifflinburg  
**966-2022**  
 Hours: Mon. - Thurs. 4 - 11 PM;  
 Fri. 4-12 AM Sat. 3-12 AM  
 Sun. 3-11 PM

### Dinner Specials 5:00 PM - 8:00 PM

- April 26**  
Fish Fry or Shrimp  
Levi 6-9
- April 27**  
Cash Bash 4-6  
Country Rubber  
Band 8-11
- May 3**  
Honey Dipt  
Chicken  
Levi 6-9

Every Mon. Wings  
 Every Tuesday Taco's 5-8  
 Every Wed. Hotdogs  
 or Hamburger

## MIFFLINBURG VFW

**POST 1964**  
 Rt. 45, Mifflinburg, PA 17844  
 Phone: (570) 966-9254  
 Mon.-Thurs. 2-11;  
 Fri. & Sat. 12 - ?; Sun. 1 - ?

- April 27, 9-12**  
Covert Action
- May 3**  
Open Jukebox
- May 5, 4-7**  
Now & Then

Bands: \$5.00 Cover Charge  
 Non Members  
**Wings Every Thursday**  
 5-8 • 14 Flavors  
**For More Info**  
**Call 966-9254**



Route 104  
 Mt. Pleasant Mills  
**570-539-8526**

- Specials**  
**Wed:** Fried Haddock,  
 Mac/Cheese, Stew  
 Tomatoes & Bread  
**Thurs:** Wing Night  
**Fri/Sat:** 14 oz Prime  
 Rib w/ 2 Sides & Bread  
**Fri & Sat, 4/26 & 4/27:**  
 Stir-Fry w/Chicken  
 or Shrimp Over  
 Rice w/Salad  
**Fri 4/26: Ricky &**  
**Harv 7-9 pm**

Dining: Wed - Sat 11-9  
 Pub: Wed & Thur 11-11  
 Fri & Sat 11-12am



Steak & Seafood  
 Route 104, Middleburg • 570-837-7501  
**Sunday Buffet**  
 10:30 a.m. to 2 p.m.

- Chicken, Beef,**
- Ham, Vegetable,**
- Stuffing, Rolls,**
- Dessert,**
- Soda & Coffee**

Lunch Buffet Monday Thru  
 Friday 11 am - 2:30 pm

- Monday & Thursday - Wing Buffet**
- Tuesday - Sirloin Steak or**  
 Fish Sand Basket
- Wednesday - Black Diamond Steak**  
 or AYCE Haddock Nuggets
- Friday & Saturday - Seafood Buffet**

## Allenwood Cafe'

16722 U.S. Rt. 15, Allenwood  
**570-538-3860**

- Specials**  
**Mon:** Italian  
**Tues:** Pot Pie & Liver  
**Wed:** Meatloaf  
**Thur:** Chicken & Waffles  
**Fri:** Haddock & Crab Cakes  
**Sat:** Steak & Haddock  
**Sun:** Reg. Menu until  
 Close 2pm

Breakfast: Mon-Sat 6:30-11am  
 Sun 6:30 to Close  
**Early Bird 6:30-8:30**  
 Free coffee with meal!

Hours: Mon-Sat 6:30 am - 8 pm  
 Sun 6:30 am - 2 pm

## Union County Sportsmen Club

**922-1128**  
 PUBLIC WELCOME!  
**Mon. & Tues.** - Closed  
**Wednesday** - Medium 1 Topping  
 Pizza & Pitcher of Beer or Soda  
 \$9.00; Pizza & Wing Buffet \$9.95  
 (4:30-8:30) Kids 10 & under \$5  
 (Soda included)

- Thursday** - Hot Roast Beef  
 Sandwich w/ Fries \$6.75;
- Friday** - All You Can Eat Assorted  
 Seafood Buffet \$12.50 (4:30-7)
- Saturday** - Buffet \$11.25
- Sunday** - Buffet \$11.25 \$1.00  
 Burger Night  
 (5-8) Sorry no Take-outs
- Saturday, April 26**  
 12 oz. Sirloin **\$12.00**  
 Grilled Chicken Breast  
**\$9.25**
- Sunday, April 27**  
 12 oz. Sirloin **\$12.00**  
 Grilled Chicken Breast  
**\$9.25**

Bar Kitchen Hours: Wed., Thurs. Sun.  
 11am-10pm; Fri. & Sat. 11am-11pm; Dining  
 Room Hours: Fri. & Sat. 4:30pm-8:30pm;  
 Sun. 11am-8pm

## PROMOTE YOUR BUSINESS!

Advertise in the  
 Union &  
 Snyder  
 County Times!

**Call**  
**837-6065**

## Street of Shops Restaurant

### Friday Specials

Baked  
 Seafood Combo  
**Haddock, Shrimp**  
**and Scallops**  
 (With  
 two Sides) **\$11.99**

**Prime Rib**  
 (With  
 two Sides) **\$12.99**

**Crabcakes**  
 (Premium  
 lump  
 crabmeat) **\$10.99**

Mon. - Thurs. 7am - 3pm • Fri. 6am - 8pm  
 Sat. & Sun. 6am - 4pm  
 SHOPS OPEN FRIDAY EVENINGS  
 100 N. WATER ST., LEWISBURG, PA • 570-523-0420

## Lewisburg American Legion Post 182

125 Buffalo Rd., Lewisburg  
 (570) 524-7479

**Wed Special Dozen**  
 Wings \$4.75 4 - 9 PM  
 Kitchen opens for lunch  
 Thursday & Friday 11 AM  
**Lunch Specials Weekly**

**Friday Night Special**  
**FISH FRY \$9.95**  
 11 AM - 8 PM  
 Plus Regular Friday Menu

**Breakfast every**  
**Sunday 8am-12 pm**

Go to our web site at  
[www.lewisburgpost182.com](http://www.lewisburgpost182.com)  
 to see what entertainment is  
 scheduled menu &  
 coming events

**OPEN TO PUBLIC**

## VFW Post 6631

Selinsgrove Rt. 522  
**BINGO**

**LARGEST PAY-OUT IN THE**  
**AREA ALLOWED BY LAW!**

**Monday Nite**  
 Doors Open @ 4/Bingo Starts @ 6:30  
 \*41 GAMES TOTAL\*  
 \*BIG INTERMISSION\*  
 \*2 LARGE CASH\*  
 PRIZES AWARDED  
**3 LARGE JACKPOTS**  
 Pots Available Weekly  
**SMOKE FREE BINGO**

**The Post Has 3**  
**Certified Service**  
**Officers For Your**  
**Convenience In**  
**Filing VA Claims**  
**(570) 374-3912**

## MIFFLINBURG LEGION POST 410

320 Chestnut St., Mifflinburg  
 Phone: (570) 966-1301

**Specials**  
**Haddock Every**  
**Friday \$9.00**

**Friday, April 26**  
 Ham Loaf 9.00  
 Black Diamond  
 \$11.75

PTSD Entertainment  
**Friday & Saturday,**  
**April 27th & 28, 8-5**  
 Fishing Derby Dash  
 Sponsored by 410

## Saturday, April 27

**Ham & Dandelion**  
**Supper**  
 Sponsored by:  
 Sal  
 5 p.m. to 8 p.m.  
**Hurricane Sound**  
 9 p.m. to 2 p.m.



# Local Legion Presents Check to Veterans Home



On March 26, Commander Richard Chalmers, of the American Legion Post 182, visited the Hollidaysburg Veterans Home. This is a Pennsylvania State Veterans Home that has nearly 500 Residents. The facility was able to procure computer equipment for the residents to use but did not have the resources for the internet provider. A request was made to the Kratzer- Dull Post in Lewisburg for funding, "Residents Access to the Internet", at three buildings. A \$1500.00 check was presented to Mr. Andrew Quintero, the IT Specialist who will be doing the installation. This will cover the cost for a year. Bruno Felus, Volunteer Coordinator, arranged the meeting.

# New Health Care Center at Buffalo Valley Lutheran Village



Construction continues on the new health care center at Buffalo Valley Lutheran Village, Lewisburg. The center features a modified neighborhood concept that is unlike traditional nursing homes; in addition, one neighborhood will be dedicated specifically for people seeking short-term rehabilitation. The building is being constructed as an addition to the village's existing personal care center. Construction is expected to be completed in June. When the building is finished, the existing nursing care center will be demolished for on-site parking.

# Lewisburg Sunset Rotary Club News



In the photo attached, Irene Henninger, left, President of the Lewisburg Sunset Rotary Club, presents Katie Davis, right, CEO of the Lewisburg Area Recreational Authority, this year's literacy book for young readers "Stop Snoring Bernard" and encourages her to "pay it forward" by giving the gift of literacy to a child.

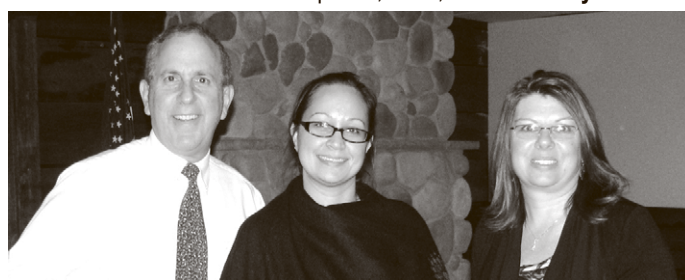
Katie Davis Lewisburg Area Recreational Authority CEO, recently spoke to the Lewisburg Sunset Rotary Club about the accomplishments of LARA. The Rail Trail has been completed from Lewisburg to Mifflinburg. There is still work to be done to take the trail south to the Susquehanna River but renditions of the perceived project are being reviewed. She is hopeful to make the trail a "go-to" place for families. LARA began an Adopt a Trail Program this past year and the entire length of the existing trail has been adopted and will be cared for by the individuals and groups signing up. On April 20th there will be a trail-wide clean up day to get everything ready for the warmer weather and more residents using the trail. Some upcoming events on the trail were given including an April 25th Moon Walk, not the dance but a walk under the full moon. May 11th will feature stargazing with Bucknell's Ned Ldd from 8 to 10 and many more interesting activities. Katie also provided an overview of LARA's many other programs available for the community and thanked Bucknell's students for their assistance with several projects and fundraising efforts for the betterment of LARA. Lewisburg Sunset Rotary meets on Monday evenings at 5:45 pm at Puirseil's Irish Pub, 17 South Sixth Street in Lewisburg. Business, professional or community-minded individuals are welcomed to attend and learn more about Rotary and programs in the community.



The Lewisburg Sunset Rotary Club is pleased to welcome several new members. In the photo, President Irene Henninger (left) welcomes from left to right, Justin Charles, Mallissa Weaver, and Bob Randall, on the right. To Bob Randall's left is Dawn Sprenkle, Membership Chair of the Lewisburg Sunset Rotary Club. Lewisburg Sunset Rotary meets on Monday evenings at 5:45 pm at Puirseil's Irish Pub, 17 South Sixth Street in Lewisburg. Business, professional or community-minded individuals are welcomed to attend and learn more about Rotary and becoming a part of this exciting organization.

The Lewisburg Sunset Rotary Club is pleased to welcome Nani Randall as a new member. Nani is a former Rotarian from Maryland and has been actively involved in the Sunset Rotary Club since first learning about the club. She is an active tennis player and a member of the USTA and a veteran of the US Navy. Nani provides health insurance coverage options for Medicare recipients and represents the insurance profession as her vocation classification in the club. Rotary was founded to represent the variety of vocations that make up a community at its founding in 1905, and continues to search out business, professional and community-minded individuals to represent the particular region that the club serves. In the photo, Fred Teichman, MD, sponsor, welcomes Nani along with Dawn Sprenkle, Membership Chair of the Lewisburg Sunset Rotary Club who performed the installation of membership. The Lewisburg Sunset Rotary meets on Monday evenings at 5:45 pm at Puirseil's Irish Pub, 17 South Sixth Street in Lewisburg and welcomes business, professional or community-minded individuals to attend and learn more about Rotary and becoming a part of this exciting organization.

Dave Lauer of the Selingsgrove Rotary Club explains a program benefiting local dental clinic to the Lewisburg Sunset Rotary Club. See story below for more information. At a recent meeting, Dave Lauer of the Selingsgrove Rotary Club presented a pro-



gram whereby Rotary Clubs of the Susquehanna Valley could join together and help raise funds for the Susquehanna River Valley Dental Health Clinic. After learning of the Selingsgrove Rotary program, the Lewisburg Sunset Rotary Club voted to participate and help make a difference for this clinic. Located in Sunbury, the clinic struggles with funding to provide low cost dental care for families and children needing dental care. The Selingsgrove Rotary Club and the other participating Rotary Clubs, have issued a "War Near the Susquehanna River Shore" and is working with cooperating clubs and car dealers in this region. Dealers who participate will make a donation for new and used vehicles sold during the month of April, the month of this fundraising program. All funds donated from April vehicle sales go entirely to the dental clinic. Poor dental care relates to serious other health issues and funding is greatly needed to keep the clinic continue to provide low cost dental care to those who need it. Car dealers participating in this program, thusly named from Rotarian Lauer's love of golf and a recent professional golf challenge, will have participation signs and posters in their dealerships. To learn more about Rotary, the programs and projects to aid our local community and other international projects, interested professional, business and community minded individuals are welcomed to attend a meeting held Mondays at 5:45 PM, Puirseil's Irish Pub, 17 South Sixth Street in downtown Lewisburg.



Irene Henninger, President of the Lewisburg Sunset Rotary Club, along with President-Elect Vickie Zimmerman, Membership Chair Dawn Sprenkle Past President Peg Bouton and the members of the Lewisburg Sunset Rotary Club recently honored Karen Teichman, Past District Governor of Rotary District 7370 and the founding member of the Lewisburg Sunset Rotary Club with the 2012-2013 Lewisburg Sunset Rotary Club "Service above Self" award. The beautiful award was designed by Scott Fritz, a member of the club. A beautiful bracelet with charms representing the wide variety of projects made possible by the club during it's five year history, in the community was also presented to Karen Teichman. President Irene Henninger expressed gratitude for the dedication and contributions made to the club and several members made additional comments. "Service above Self" is the official motto of Rotary International and also serves to convey the humanitarian spirit of the organization's more than 1.2 million members. Strong fellowship among Rotarians and meaningful community and international service projects characterize Rotary worldwide. Teichman has sponsored more than 75 members to Rotary, helped form several new clubs, served as a host parent to exchange students from nine different countries, participated in humanitarian projects within this local community as well as in Nicaragua, Mexico, India and more, has worked at the Rotary International level on committees and several worldwide projects during her nearly 20 years in Rotary. This was the Lewisburg Sunset Rotary Club's first "Service above Self" award and plans have been made to continue recognition of others exemplifying this meaningful motto. The Lewisburg Sunset Rotary Club meets on Mondays at 5:45 pm, Puirseil's Irish Pub, 17 South Sixth Street in Lewisburg. Business, professional or community-minded individuals interested in learning more about Rotary are welcome. You can also find the club on facebook or at www.lewisburgsunsetrotary.com.

Irene Henninger, President of the Lewisburg Sunset Rotary Club with the 2012-2013 Lewisburg Sunset Rotary Club "Service above Self" award. The beautiful award was designed by Scott Fritz, a member of the club. A beautiful bracelet with charms representing the wide variety of projects made possible by the club during it's five year history, in the community was also presented to Karen Teichman. President Irene Henninger expressed gratitude for the dedication and contributions made to the club and several members made additional comments. "Service above Self" is the official motto of Rotary International and also serves to convey the humanitarian spirit of the organization's more than 1.2 million members. Strong fellowship among Rotarians and meaningful community and international service projects characterize Rotary worldwide. Teichman has sponsored more than 75 members to Rotary, helped form several new clubs, served as a host parent to exchange students from nine different countries, participated in humanitarian projects within this local community as well as in Nicaragua, Mexico, India and more, has worked at the Rotary International level on committees and several worldwide projects during her nearly 20 years in Rotary. This was the Lewisburg Sunset Rotary Club's first "Service above Self" award and plans have been made to continue recognition of others exemplifying this meaningful motto. The Lewisburg Sunset Rotary Club meets on Mondays at 5:45 pm, Puirseil's Irish Pub, 17 South Sixth Street in Lewisburg. Business, professional or community-minded individuals interested in learning more about Rotary are welcome. You can also find the club on facebook or at www.lewisburgsunsetrotary.com.



**ROGER C. LONG AUTO SALES, INC.**  
Located 1 mile of Rts. 11 & 15 on Park Road,  
Selingsgrove • Phone: (570) 743-7596

2008 Cobalt LT 4DR, Silver, 4 cyl., Auto., PS, PB, AC, AM/FM/CD, S/R 103K.....	\$7995
2007 Spectra, EX, 4DR, Maroon, 4 cyl., Auto., PS, PB, AC, AM/FM/CD, 99K.....	\$6695
2007 Focus SE, 4DR, Red, 4 cyl., Auto., PS, PB, AC, AM/FM/CD, 111K.....	\$5995
2006 Foreza, 4DR, 4 cyl., 5SPD., PS, PB, AC, AM/FM/CD, 83K.....	\$5695
2005 Colbalt, 4DR, White, 4 cyl., Auto., PS, PB, AC, AM/FM/CD, 99K.....	\$6995
2005 Altima 2.5S, Black, 4 cyl., Auto., PS, PB, AC, AM/FM/CD, S/R, 108K.....	\$7995
2005 Accord EX, 4DR, 4 cyl., 5 SPD., PS, PB, AC, AM/FM/CD, S/R, 104K.....	\$9295
2001 Corvette Conv., Red, 8 cyl, Auto., PS, PB, AC, AM/FM/CD, 14K.....	\$27995
1998 Taurus SE, 6 cyl., Auto., PS, PB, AC, AM/FM/Cass., 98K.....	\$3695

**TRUCKS, VANS, 4X4S**

2008 Grand Cherokee, 6 cyl., Auto., PS, PB, AC, AM/FM/CD, S/R, 93K.....	\$13995
2004 S10 LS Crew Cab, 4x4, 6 cyl., Auto., PS, PB, AC, AM/FM/CD, 82K.....	\$9995
2004 Envoy SLT XUV, 4x4, 8 cyl., Auto, PS, PB, AC, AM/FM/CD, 95K.....	\$9995
2003 Frontier XE Crew Cab, 4x4, 6 cyl., Auto., PS, PB, AC, AM/FM/CD, 117K.....	\$9995

You can view our entire inventory at [www.rogerclongautosales.com](http://www.rogerclongautosales.com)

**BILL MARKS' AUTO SALES**

**Go to our web site to apply if you have bad credit or bankruptcy!**

**Visit Our Website At [www.billmarksautosales.net](http://www.billmarksautosales.net)**

10 Mini Cooper S, Turbo, Leather, Moonroof, 6 Spd., 29K.....	\$20,995
10 Chrysler T&C Van, Leather, Moonroof, Nav., DVD, 25K.....	\$23,995
10 Chrysler Town & Country Touring, Stow & Go, 40K.....	\$17,995
09 Cadillac CTS 4 Premium Pkg., AWD, 30K.....	\$25,995
06 Pontiac Solstice Roadster Convertible, Leather, Chr. Whls., 31 K.....	\$15,995
11 Nissan Altima S, 4 Dr. Sedan, 23K.....	\$16,995
13 Dodge Grand Caravan SXT, Stow & Go, Power Doors, 16K.....	\$22,500
12 Dodge Grand Caravan, Stow & Go, Power Doors, 23K.....	\$20,995
10 Dodge Challenger RT, 6 Spd., Leather, Nav., Chrome Whls, 6K.....	\$30,995
07 Dodge Charger SRT 8, Leather, MR, Hemi, 28K.....	\$27,995
09 Ford Fusion SE, MR, Alloys, 7K.....	\$15,995
12 Ford Fusion SE, Alloys, 11K.....	\$18,995
10 Ford Focus SE, 4 Dr., Auto., Alloys, 31K.....	\$13,495
08 Ford Escape XLT, Moonroof, 4x4, 61K.....	\$13,995
08 Ford Mustang GT, Premium Leather, 5 Spd., 30K.....	\$20,995
06 Ford Mustang GT Conv., Polished Wheels, Leather, 5 Spd., 27K.....	\$19,995
05 Ford Mustang GT, Roush Edition, 35K.....	\$18,995
12 Chevy Malibu LT, Alloys, 5K.....	\$18,995
12 Chevy Malibu LS, 8K.....	\$16,995
11 Chevy Malibu LT, Moonroof, Alloys, 19K.....	\$16,995
10 Chevy Malibu LS, Wing, 27K.....	\$14,995
10 Chevy Malibu LT2, Leather, Moonroof, Crome Wheels, 15K.....	\$17,995
10 Chevy Malibu LS, 29K.....	\$13,995

**- TRUCKS & CARGO VANS -**

12 Ram 1500 Crew Cab Sport, 4x4, Ch. 20's Whl., Hemi, 20's, 3K.....	\$29,995
12 Ram 1500 Crew Cab Sport, Hemi, 20's, 12K.....	\$28,995
12 Ram 1500 Crew Cab XLT, 4x4, 12K.....	\$25,995
11 Ram 1500 Crew Cab, Hemi, 20" Wheels, 4x4, 15K.....	\$27,995
11 Ram 1500 Crew Cab Sport, Leath., Chr. 20's, Hemi, 4x4, 23K.....	\$29,995
10 Ram 1500 Crew Cab SLT, 4x4, 19K.....	\$22,995
10 Ram 1500 Crew Cab SLT, Hemi, 4x4, Lift Kit w/Extras, 12K.....	\$30,995
09 Ram 1500 Crew Cab SLT, 4x4, 35K.....	\$21,995
09 Ram 1500 Crew Cab SLT, 4x4, 36K.....	\$22,995
08 Ram 1500 Crew Cab Sport, Chrome 20's, Hemi, 4x4, 30K.....	\$23,995
07 Ram 1500 Crew Cab, Laramie, Hemi, Lthr., 4x4, 20' Chm. Whl. 36K- \$22,995	
07 Ram 1500 Rag. Cab SLT, Hemi, 4x4, 47K.....	\$16,995
07 Chevy Avalanche LTZ, Leather, Moonroof, DVD, Navigation, 4x4 Chrome 20's, 53K.....	\$26,995
13 Chevy 3500, 4x4, w/12' Stake Body Dump, 20K.....	\$30,995
13 Chevy 2500 H.D. Crew Cab LT, 4x4, 19K.....	\$34,995
11 Chevy 2500 H.D. Ext. Cab LS, 4x4, 27K.....	\$28,995
13 Chevy 1500 Crew Cab LT, 4x4, 13K.....	\$29,995
12 Chevy 1500 Reg. Cab, 4x4, 6K.....	J.A.
11 Chevy 1500 Reg. Cab LS, 4x4, 29K.....	\$19,995
11 Chevy 1500 Ext. Cab, 4x4, 16K.....	\$27,995
11 Chevy 1500 Quad Cab LT Z71, 4" Lift Kit, Many Extras, 23K.....	\$30,995
11 Chevy 1500 Quad Cab LT Z71, 4" Lift Kit, Many Extras, 30K.....	\$30,995
11 Chevy 1500 Cab Shortbed LS, 4x4, 18K.....	\$23,995
10 Chevy 1500 Ext. Cab LT, 4x4, 25K.....	\$25,995
10 Chevy 1500 Quad Cab LT, Chrome 20's, 4x4, 30K.....	\$27,500
09 Chevy 1500 Reg. Cab w/Plow, 4x4, 12K.....	\$21,995
09 Chevy 1500 Quad Cab LT Z71 4x4, 29K.....	\$24,995
08 Chevy 1500 Quad Cab LT, 4x4, 49K.....	\$21,995

02 Chevy Corvette, Leath., Chr. Whls., Auto, Rem. Hardtop, 27K.....	\$28,995
02 Chevy Corvette, Leath, Alloys, Rem, Hardtop, Auto, 37K.....	\$22,995
12 Chevy Tahoe LT, 4x4, 3rd Seat, Heated Leather, 18K.....	\$37,995
10 Chevy Equinox, LT, AWD, Leather, MR, 30K.....	\$23,500
10 Chevy Equinox, LS, AWD, 36K.....	\$19,995
12 Jeep Grand Cherokee Laredo, 4x4, 16K.....	\$28,995
12 Jeep Grand Cherokee Laredo, 20" Wheels, Nav. 4K.....	\$30,995
07 Jeep Grand Cherokee Laredo, Leather, Moonroof, 58K.....	\$15,995
11 Jeep Wrangler, 4 Dr., Sport, Hard Top, 6 Spd. 9K.....	\$28,995
10 Jeep Wrangler, 4 Dr., Softtop, Auto, 4x4, 18K.....	\$25,995
10 Jeep Wrangler, 2 Dr. Softtop, Mtn. Edt., Auto, 10K.....	\$24,995
07 Jeep Wrangler, 4 Dr. Hardtop, 6 Spd. 28K.....	\$22,995
08 Nissan Pathfinder SE, 3rd Seat, Navigation, 4x4, 21K.....	\$22,995
10 Kia Forte EX, Coupe, Alloys, Wing, 21K.....	\$15,995
06 Hyundai Tiburon SE, Leather, MR, Alloys, 64K.....	\$9,995
08 Hyundai Tiburon GT, V6, 5 Spd., Leather, Moonroof, 43K.....	\$12,995
11 Scion XD Release Edition, 32K.....	\$13,995
10 Scion XB Release Edition, Alloys, 38K.....	\$14,995
06 Buick LaCrosse CXL, Leather, Chrome Wheels, 52K.....	\$12,995
05 Buick LeSabre, Custom, 32K.....	\$10,995
08 Toyota Camry LE, 20K.....	\$14,995
10 Toyota Corola S, 47K.....	\$14,995

**RISHEL'S MEATS**

701 Walnut Street, Mifflinburg, PA  
Store Hours: Mon. - Thurs. 8-5;  
Fri. 8-6; Sat. 8-4

Phone - 966-0611 Ken Rishel, Owner

**STOP & SEE US AT THE MIDDLEBURG AUCTION ON TUESDAYS AND THE LEWISBURG MARKET ON WEDNESDAYS!**

**EVERYDAY LOW PRICES!!**

Boneless Chuck Roast..... \$4.99 lb.  
Low End Pork Roast..... \$2.19 lb.  
Smoked Turkey Breast..... \$5.89 lb.

**Enjoy Our Genuine Homecured & Smoked Meat Products!**

**The Water Garden Experts Are Back!**  
Mike, Pattie & Tym Gilbert

**COMPLETE AQUATICS**

**EVERYTHING TO START AND MAINTAIN YOUR GARDEN POND PLUS FREE EXPERT ADVICE!**

- Water Treatments
- Pumps • Filters
- Kits • Tetra Fish Food
- Aeration & Large Pond Supplies
- Rain Gardens And MORE!

Visit our site at [www.thepondshoppe.com](http://www.thepondshoppe.com)  
Hours: Mon - Thur 10-5 Fri 10-7 Sat 10-3  
68 S & H Dr Route 522 3 miles south of Selingsgrove  
Phone: 570-374-8303



## Transition Conference Prepares Students For Life After High School



Tina Hans receives the 2013 Dr. Cynthia Schloss Transition Education Award from Andy Hergan, CSIU transition consultant.

An annual Transition Conference was held last month for students with disabilities from Northumberland, Snyder and Union counties to prepare them for the transition to life after high school.

Last month, more than 240 students attended the conference at Bloomsburg University which included a keynote speaker and breakout sessions.

The keynote speakers were Diana Morris Smaglik, Gabriel Smaglik and Everett Deibler. Diana Morris Smaglik has been an advocate for disability rights, and is the marketing director for the Anthracite Region Center for Independent Living (ARCIL). Her son, Gabriel, developed a life-threatening seizure disorder and became developmentally disabled. Gabriel, who spoke about living with a disability and overcoming obstacles, is a volunteer with ARCIL.

Deibler is a community building coordinator at the Lehigh Valley Center for Independent Living and assists people with disabilities in finding community services. He spoke to the attendees about what it means to live with a disability and his involvement with the Pennsylvania Youth Leadership Network, a team of youth and adults with disabilities that promotes successful post-school outcomes.

Sixteen breakout sessions also provided attendees with additional learning opportunities. Some of this year's topics were employer expectations, job coaching, social media, assistive technology and information about higher education opportunities.

The Dr. Cynthia Schloss Transition Education Award was presented to Tina Hans, a senior attending SUN Area Technical Institute. The award, created to honor the memory of Dr. Schloss, is awarded annually to a student who is nominated by his or her teacher and has "a strong work ethic and commitment to preparation for adult life."

Students from the CSIU's Work Foundations + program joined their peers from Lewisburg Area, Midd-West, Mifflinburg Area, Milton Area and Selinsgrove Area school districts, as well as SUN Area Technical Institute. Work Foundations+ is a program that provides hands-on vocational training in real work surroundings for students with special needs. Students attend on a full-time or supplemental basis and develop work ethic and employment skills, and receive assistance with transition from school to work.

The Central Susquehanna Intermediate Unit (CSIU) has been co-sponsoring the annual conference since 1999. This year's conference was co-sponsored by the Union-Snyder Transition Coordinating Council.

## Kelsey's Dream Welcomes Summer Intern

Kelsey's Dream would like to welcome Micah Talabiska to our team of summer interns as an Administrative Assistant. Micah is from Lewisburg and she's currently a junior at Gettysburg University studying Economics. This spring semester she spent time studying Global Economics and Business in Washington, D.C. at American University. She has plenty of experience volunteering for local Gettysburg elementary schools and spent time collecting food for the needy at Gettysburg's Campus Kitchen. Her contributions should keep Kelsey's Dream organized and efficient this summer.



## Bicentennial Group To March In Veteran's Parade

The Union County Bicentennial Committee is looking for people to walk in costume representing historic periods from the past to the near present and be part of the Bicentennial presence in June 29th Veteran's Parade in Lewisburg. This year's parade will emphasize Union County's past in this Union County's Bicentennial year 2013.

To bring our history alive as part of Union County's Bicentennial celebration, volunteers are currently being sought to participate either as a marcher or helping with costumes for the parade effort. Marchers are encouraged to form organizational or community groups banded together in costume.

Please contact member Diane Lenge at 966-1783 or email diane45@dejazzd.com to find out more.

## School Savings Drawing Winners



Mifflinburg Bank & Trust Customer Service Representative Donna Duke congratulated Aliyah Ikbarich, Annika Klinefelter and Cameron Neidig. The students each won a \$25 deposit to their school savings account. They are the School Savings drawing winners for January, February and March.



Mifflinburg Bank & Trust Customer Service Representative Donna Duke presented Ipods to Mifflinburg Intermediate School students Hannah Zechman, Makena Boyer and Allison Stup. The students were the January, February and March winners of the School Savings monthly drawings. Also pictured is Mr. Scott Zimmerman, School Principal.

## Ladies Auxiliary Helps Fill Care Packages For Soldiers



The Ladies Auxiliary of American Legion Post 182 took part in filling care packages for the Liberty Family Readiness Group. The 58 packages are going to the deployed soldiers of Company A, 3rd Battalion, 103rd Armor, Lewisburg, Pennsylvania.

Check out our website:

www.thesnydercountytimes.com

email us at: scuc@ptd.com

**Martin's GREENHOUSE**

RT. 304, MIFFLINBURG, 1/2 MILE FROM MIFFLINBURG, 1ST FARM ON LEFT.  
966-5060 • Hours: Mon.-Fri. 8-8; Sat. 8-5; Closed Sunday

*Think Spring*

**Come & Shop at the Greenhouse**  
**We're Open for the Season!**  
**Flower & Vegetable Plants**

**MIFFLINBURG DENTISTRY**

Dr. John L. Holmes, DMD, provides a full range of specialized dental services, from simple restorations to more complex treatments, all uniquely designed to meet his patient's needs. Over the years he has become known for his enthusiasm in educating his patients so that they will learn to take care of their mouths, improving their overall health.

**We invite you to join our satisfied patients who have achieved, and continue to maintain, dental health.**

**570-966-9567**

www.drjohnlholmes.com

**Fraley's**

**5th Annual Recreational, Lawn & Garden Event**

At the Fraley Farm Complex, 1515 Kepner Hill Rd, Muncy, PA  
All day sale - Selling w/ 2 auctioneers

**Saturday, May 4, 2013 9:00 A.M. sharp**

**Everything for the Outdoors! "You can Sell & You can Buy"**  
Taking Consignments of **Campers, Boats, Vehicles, Lawn Tractors, Mowers, Trailers, Carts, 4-Wheelers, RTV's, Golf carts, Hunting & Fishing Items.**

*This is only a partial list, many items will not be advertised.*

Already consigned: 2000 Holiday Rambler Endeavor Motor Home, 1 owner, w/many extras, Very Nice.  
JD 955 Tractor 4X4 w/JD 70A Loader; MF 1225 Tractor w/deck; JD 4200 4X4 Tractor w/loader; Jacobsen LF3400 4X4 diesel Reel Mower; Husq. O turn mower w/bagger; Troybilt - CC - White lawn tractors; JD 455 diesel lawn tractor w/ 60" deck; JD 445 hydro tractor w/ 60" deck; JD 425 hydro tractor w/ 54" deck; JD 4x2 Gator, gas; Polaris 500 & 425 4X4 4 wheelers; Club Car golf cart; New Andy 600 & 500 Rotary mowers; Lowery 3 pth post hole diggers; Land Pride RTR2562 3 pth rototiller; Land Pride FD 2500 3 pth finish mower; Swisher 44" pull mower; Bush Hog ATH 900 3 pth finish mower; Craftsman 5.5 rototiller; lawn roller; lawn carts; wheelbarrows, chain saws, trimmers; hand & garden tools; other tools; New & used trailers of all sizes.  
GUNS: Rem 7600 270 pump w/ Simmins 3-9 scope; Sears model 54 30-30 lever w/ scope mounts; Stevens model 67 12 ga pump; New Worcester dbl brl 16 ga; Crosman 760-0 air pellet rifle; Eastman X Force 300 DX crossbow w/ red dot scope; 2 other crossbows; Jennings compound bow w/ sights & arrows; arrows; hunting knife; binoculars; etc.

(4) Custom handcrafted & signed by John Steinmety fishing fly rods; other fishing poles, other fishing items.

**Decorated Stoneware - Lawn Furniture - Shrubbery - Flowers - Plants**  
Selling: An awesome array of Trees, Shrubbery, Flowers & Plants  
Loads & loads of trees including Norway & Blue Spruce, White Pine, Suburban Spruce, Blue Niagara, Shade trees, Red Maple, White Birch, Flowering plum & pear trees, Fruit trees including apple, peach, plum. Every kind of evergreen shrubs & trees, Azaleas, Lilacs. Many many more! 100's of beautiful hanging baskets, flower planters galore, garden plants, tomato & bedding plants, trays of flowers!  
Large selection of new beautiful concrete stoneware: Many different bird baths, Animals including , deer, donkey w/cart, dogs, chickens, ducks, rabbits, water fountains, planters & baskets. Large selection of outdoor furniture: Poly deck furniture, tables & chairs; all sizes of picnic tables, Arbors, Swings; Gliders; Chairs, Benches.

Taking consignments on Monday 4-29 thru 5-3 everyday  
From 8:00 AM to 7:00 PM

Don't miss this Auction - Many many nice items!

Conducted by:  
**Fraley's Auction Co., Inc.**  
1515 Kepner Hill Road - Muncy, PA 17756  
www.fraleysauction.com  
**(570) 546-6907**

**MAKING A LAWN OR GETTING YOUR OLD LAWN BACK INTO SHAPE?**

**We have grass seeds, lime & fertilizer!**

**We have seed potatoes!**

**We Will Have:**  
Kennebec, Norland, Red Chiefon

**We Also Have:**  
Onion Sets & Sweet Corn

**White Tail Institute Deer Plots & Seeds Starting at \$12.99 & up**

**MULCH!!!**  
Delivery Available!

**RITTER FEEDS INC.**  
PAXTONVILLE, PA  
837-3606

**SUNNY HILL LAWN CARE**

*Specializing in Patios & Walkways*

Aerating • Mulching • Mowing • Landscaping  
Landscape Restoration • Sod Installation  
Water Features & Maintenance • Sidewalks • Patios  
Retaining Walls • Spring & Fall Clean-up  
Fully Insured • Commercial • Residential • Free estimates  
Office: 570-372-1969 Please Leave Message Cell: 570-847-5417  
*Serving All Of The Greater Susquehanna Valley*

**MICKEY'S & OIL BURNER SERVICES HEATING**

Cleanings, Maintenance, Repairs and Installations

35+ years of experience

**570.522.9997**

PROMPT PROFESSIONAL SERVICE  
SERVING YOUR AREA

**This & That Shop**

Antiques & Collectibles  
New & Used

**570-238-2448**

102 West Market St., Middleburg, PA 17842  
Tue., Thu., Fri., Sat., 10-4

**BAD BOY MOTORCYCLES**

Middleburg, PA 17842  
(Between Kreamer & New Berlin on Smalsh Barrack Road)

Specializing In Harley Davidson's  
Opening April 23rd.

Open: 10am - 6pm Tues.-Sat  
For appointments call after 6pm  
Phone: 570-374-2447  
Text Only: 570-541-5408  
Email: badboymotorcycle@hotmail.com

Quality work at a reasonable rate!

HIC: PA029705

Specializing in

- New Roofs
- Re-Roofing
- Metal Roof
- Metal Roof Coatings
- Single Ply Coatings

**knepps Roofing**

Fully Insured Free Estimates  
Owner: Jerald Knepp, Middleburg  
**570-541-1351**

Home/Office Cleaning and Recycling Pick-Up; Competitive Prices; Experienced Staff.

**S.D. Cleaning & Recycling**

**570-898-4553**