

THE Union County Times

The Area's Largest Weekly Newspaper!

LOCAL RESIDENTIAL CUSTOMERS
Presorted Standard
ECRWSS
U.S. Postage Paid
Sunbury, PA
17801
Permit No. #17

A DIRECT MAIL PUBLICATION - 16TH YEAR - NO. 37

Friday, September 14, 2012

MIDDLEBURG, PA 17842

Investigation Brings Charges of Murder

Herbert Lamont Tiebout, 37, of Lewisburg, Justin Glen Richard, 28, of Mifflinburg, Amanda L. Kratzer, 26, of Lewisburg, and Michael Andrew Shetterly II, 24, of Mifflinburg, were arrested Tuesday morning on various charges related to the death of 51 year old, Randy Alan Sampsell.

Sampsell's body was found in his Mifflinburg home at 2093 Buffalo Creek Road, on June 22, with a gunshot wound to the head. Randy's brother found his body after he hadn't heard from him in awhile. According to reports, Sampsell was murdered and

had his prescription medicine stolen from him on June 12.

Prior to investigation in the death of Sampsell, police were investigation a home invasion and robbery case at the home of Scott Vonneida, 53 of Millmont.

Vonneida was assaulted, tied up and robbery of several guns, one of which was used to murder Sampsell.

Tiebout and Richard were charged with second and third degree murder. Kratzer and Shetterly were charged with conspiracy to commit robbery. Shetterly was also charged with receiving stolen property.

Richard is now jailed in Coal

Township, while Tiebout is being held in the Snyder County Prison. Shetterly was unable to post bail and continues to be held. Kratzer is out on bail.

All four were arraigned before Magisterial District Judge Jeffrey Mensch, in Mifflinburg.

Check Out The Family Dollar Insert in This Week's Paper!
(Some areas only)

New Law Penalizes

Motorist for Ignoring Traffic Signs & Devices

A new state law imposing stiff penalties on motorist who ignore "road closed" or other safety warning signs and devices is now in effect, PennDOT said today.

Act 114, signed on July 5, by Governor Tom Corbett, reinforces the critical need for all drivers to obey traffic control signs. The law aims to increase safety for motorists and emergency responders in areas where flooding or other hazardous conditions exist.

"Too often, motorists decide that their immediate needs outweigh the safety warning signs and they ignore them, which increases hazards for them and emergency responders," said PennDOT Secretary Barry J. Schoch. "This law underscores that we are taking safety seriously. When motorists are confronted with emergency road closures, we urge them to use common sense and obey the signs that are placed to keep them safe."

Under the law, motorists who drive around or through signs or traffic control devices closing a road or highway due to hazardous conditions will have two points added to their driving records and fined up to \$250.

If the violation results in a need for emergency responders to be called, the fine is increased to in between \$250 and \$500. In addition, violators will be held liable for repaying the costs of staging the emergency response.

Follow PennDOT on Twitter at www.twitter.com/PennDOT-News and on Facebook at www.facebook.com/PennsylvaniaDepartmentofTransportation. Visit PennDOT's full website at www.dot.state.pa.us.

Three Local Hikers Participated in 'Super Hike'



Local hikers that participated in The Keystone Trails Association Super Hike' in York County on Saturday September 8. Alan Gilda of Freeburg, Donovan Inch of Penns Creek, and Tony Robbins of Watsonstown walked 28.4 mile.

HOEVER'S BERNINA SEW LLC
2282 Beaver Road Off Route 104 (2 Mile South Of Mifflinburg)
570.966.3822

25th Anniversary Sale
Sept. 21st 9 am - 8 pm & Sept 22nd 9 am - 3pm

We offer FREE financing up to 48 months, no interest with equal payments! See store for details!

Special Guests:
Kellie Rushing, who has been teaching sewing for over 20 years! And Gabriele Schäfer, head of product management Bernina Sewing and Embroidery Systems, from Switzerland.



Gabriele Schäfer

YOU COULD Win THIS....

Grand Prize:
Bernina 830LE
MSRP \$13,499



The only luxury, high-performance sewing and embroidery system in the world.

Bernina 830LE is in a class all its own. The crown jewel among sewing machines. A sewing and embroidery system with technology so advanced, features so thoughtful, the experience of sewing on it is simply luxurious.

LOTS OF PRIZES!!!

PLUS: 15% OFF On Fabrics & Notions!

We Carry Personalized Custom Built Amish Oak Cabinets




All Machines Are Specially Priced For This Sale!

We offer lots of SEWING CLASSES to join. Come enjoy a day of project making from wall hangings, tablerunners, stand alone designs, bags and much more! We have plenty of space to spread your projects out. Stop by the store and request a list of upcoming events.

1st Prize:
Bernina Activa 215
MSRPS1099
SALE \$529.00

2nd Prize:
Bernina 700 D
MSRPS1099
SALE \$579.00

3rd Prize:
Horn of America Sewing Machine Cabinet
MSRP \$1,147
SALE \$679.00

Hours: Mon., Wed, Thurs. 9-4 / Tues. & Fri. 9-8 / Sat. 9-3 / Closed Sun.

Reiff's Poultry
966-0769

Started Pullets



Order NOW For October Pickup!

Ready to lay

ATTORNEY



MICHAEL D. SUDERS
"Your First Call"
966-3360

Engle's Farm, Greenhouses & Garden Center
(570) 837-0432

Fall is For Planting
Choose from Over 7,000 Fall Mums
Asters, Pansies, Flowering Kale & Holland Bulbs

Sales good through September 29th

Mix & Match Sale
Buy ANY 3 Trees, Shrubs or Perennials and Get the 4th One FREE!*

*of equal or lesser value

171 Greenhouse Road. 1/2 Miles W. of Middleburg, Rt. 552 South
Gift Certificates Available
www.englesgreenhouse.com

HOURS:
Mon. - Sat. 9-5
Closed Sunday

Larry's PIZZA & SUBS
34 E. Chestnut St., Mifflinburg 966-5012 or 966-5013
44 North Derr Drive., Lewisburg 522-5012 or 522-5013

Customer Appreciation Days
September 14th, 15th & 16th

14 Inch One Topping Pizzas-\$5.99
Middleswarth Weekender Chips-Two for \$5
Two Liter Pepsi Products-99¢

Stop by for these great deals and register to win a Kindle Fire or a large pizza a week for one year!

PEQUEA QUALITY YOU CAN TRUST, BUILT RIGHT IN YOUR BACKYARD.



ROTARY RAKE

- 9' - 11' clean sweep raking width
- Tandem axles with 4 bolt wheels
- Exclusive Level-Lift hydraulics
- Totally enclosed oil bath gearbox
- Removable tine arms available

RAKES & TEDDERS

0% Financing for 36 Months OR \$500 CASH BACK




Turbo Rake Turbo Tedder

HOEVER TRACTOR
866-235-7359
11715 OLD TURNPIKE ROAD, MIFFLINBURG, PA

Reiff's
Off Rt. 45 at Vicksburg
966-2451
www.ReiffsNursery.com
NEW SUMMER HOURS
Mon.-Sat. 8am-5pm;
Closed Sundays

50% off many gardening items on benches in greenhouse!!

FALL MUMS STARTING AT \$1

Pumpkins Gourds Indian Corn Scare Crows Fall Decorations	Perennial Blowout "SALE" Buy 6 Pots Get 6 Pots Free 1 Gallon Pots Limited Offer Still Going
--	---

THOUSANDS OF MUMS
Great Selection of Trees-Shrubs-Fruit Trees-Perennials
Ready To Plant Now!

VanScyoc's Spraying Services
Over 10 Years Experience - Owner Operated

HIGH PRESSURE WASHING

Commercial • Residential • Agricultural
Patios & Decks Cleaned • Houses • Commercial Buildings
Licensed • Fully Insured
Satisfaction Guaranteed

"If It's Dirty We'll Wash It!" (570) 658-4703



Community Calendar

Club 39
Club 39 meets every Wednesday from 2-4 p.m. in the Government Building, at 347 Chestnut St., in Mifflinburg. Sept. 19: Program Kim Sawyer. Sept. 26: Birthdays--Fun and Games. Sept. 27: Dinner at the Barnyard at 5 p.m.

Community Table
You are welcome at the "Community Table", a free meal served at the First Lutheran Church, in Mifflinburg, on the first Saturday of every month (October 6) from 11 a.m. - 1 p.m.

Union County Muzzleloaders
Sunday, October 7: "Novelty shoot". Registration time is 9 a.m. to 2 p.m. No in lines, open sites only. Lunch and beverage will be available. Contact persons: Mark Wehr, President at 966-2304 or Cliff Bowersox, V.P. at 922-4885.

New Softball League
Forming a new girls softball league for Union, Snyder, and Northumberland Counties that will be an instructional, non-competitive league that teaches the basics of softball, offers more playing time, teaches sportsmanship, and strives for fun. If you are interested in participating in and starting this kind of league, call Alexa at (570) 898-9780.

Concert at Penns Creek
True Heart, Living Hope and Krissy Kline will be in concert at Penns Creek Adult Resource Center on Friday, September 28. Doors will open at 5 p.m. for dinner and music will start at 5:45 p.m. Free admission with a free will offering. Any questions, call 837-6200.

Back-to-School Youth Rally
Mifflinburg Assembly of God, at 1001 Market Street, in Mifflinburg is hosting a Back-to-School Youth Rally with a free concert by Randy Fisher on Sunday, September 23, starting at 6 p.m. For more information, call 570-966-1714.

Voters Guide
The League of Women Voters of the Lewisburg Area is working on its non-partisan Voters Guide for the General Election on November 6. Any write-in candidate running for office in Union County who wishes to be included in the Guide must contact the League by Saturday, Sept. 15. All candidates already on the ballot will receive letters. Please get in touch with Liz Clement, clements@ptd.net, 570-524-7108. For more information on the League, visit www.palwv.org/lewisburg.

Buffalo Valley Singers
Buffalo Valley Singers invites all who enjoy choral singing to join for the 2012 Christmas concert season by attending weekly Monday rehearsals starting on September 17, at 7 p.m. at St. John's United Church of Christ, at 1050 Buffalo Rd., in Lewisburg. No auditions are necessary, and there is an annual membership fee.

Bingo
The Millmont West Union Area Lions Club will have a Longaberger Basket Bingo on Monday, September 17, at the Carriage Corner Restaurant, at 257 East Chestnut Street, in Mifflinburg. Doors open at 5:30 p.m. with games beginning at 6:30 p.m. For more information, call 966-0096 or 966-3940.

Audubon Monthly Programs
Seven Mountains Audubon, the area's local Audubon chapter, monthly free programs have started. On Wednesday September 19, Tom Reider, a retired pilot, teacher and sculptor, will emphasize adaptations that allow birds to specialize in things such as speed, hovering or slow flight. His presentation will include slow motion scenes and special effects from BBC video "The Mastery of Flight" with David Attenborough. Join us to learn more. All are welcome at 7:30 p.m. at the Kelly Township Supervisors Building, at 551 Zeigler Road in Lewisburg.

Philco/Ford-Zenith Get-together
We are now in the planning stage of our 35th P/F-Z annual get-together. It's truly amazing that we will gather each year to celebrate. Our goal is to reach out to all communities to keep our former co-worker update. We will invite all former department personnel. We represent "Made in America", and we are proud of our accomplishments and heritage. We will be meeting on September 20th, at the Watson Inn for our night of fun and fellowship. Please contact us for more information, Ralph Young at (570) 538-2284; Virginia Wirth at (570) 538-2434; Charles Treas at (570) 374-8513; and Shirley Lorah at (570) 538-2043.

LPCWA Meeting
The next meeting of the Lower Penns Creek Watershed Association will include a report from Jonathan Niles on stream assessments he conducted this summer on many runs in our watershed area from Weikert to the Susquehanna River. The meeting is open to all and will be held on Thursday, September 20, at 7 p.m., at the Penns Creek Adult Resource Center in Penns Creek. Call Diane at 966-1783 for information.

Classic Car Show
Mifflinburg Hose Company is holding their 8th annual Classic Car Show sponsored by B.Z. Motors Chrysler Jeep Dodge, in Lewisburg, on September 22 from 10 a.m. to 4 p.m. at the VFW Grounds at 10770 Old Turnpike Road, near Mifflinburg. Registration is from 8 a.m. to 10 a.m. with judging between 12 p.m. -2 p.m. and awards at 3 p.m. A registration fee is charged. Food Stands on site along with flea market, craft & swap vendors. Free parking and admission. For more information, call Mark Chivari at 966-7222, Tom Kleckner at 716-1227 or on Facebook at Mifflinburg Hose Company.

Fall Festival
The Millmont Village Green Association will be holding a Fall Festival on Saturday, September 29, beginning at 9 a.m. The event will feature antique and craft vendors, chicken barbecue and children's activities. The chicken barbecue will be held from 11 a.m. - 4 p.m. For chicken tickets or more information, please contact Tom Catherman at 922-1662.

Special 50's Theme Benefit
The public is invited to a special 50's theme benefit in honor of George Cook Jr., on Saturday, September 29, from 10 a.m. - 8 p.m. at the Youth Center on Dreisbach Church Road, off Rt. 45 Watch for signs. There will be a pig roast, raffles, auction and a DJ spinning 50's music. Come dressed in your best 50's attire and receive a special prize. All proceeds will benefit Mifflinburg High School and the Enterline School of Dance

NOTE TO READERS
To place events in the calendar please send them at least three weeks before the event so that we can get it in at least twice before the event. The deadline for events is **MONDAY BY 12 NOON!** The calendar goes by space available. Send, Fax or Email us your event. Address: P.O. Box 356, Middleburg, PA 17842. Fax: 837-0776. Email: scuc@ptd.net Thank you!!

Nancy's Deluxe Tours
312 Walnut St.
Mifflinburg, PA 17844
JOIN US FOR A LIVE PRESENTATION ON
"AVALON'S ROMANTIC RHINE RIVER CRUISE"
OCTOBER 6-13, 2013
Presented by: Doug Brown, Avalon Cruises
Trudy Lagerman, Liberty Travel
Nancy Shuck, Nancy's Deluxe Tours
Wednesday, September 26th at Susquehanna Valley Mall,
Selinsgrove, Old Mall Community Room at 6:30.
RSVP: By 9/21 To Nancy by email or phone.
Call **570-966-2778** or **570-490-3365**
www.nancysdeluxetours.com
PUC: A-00009329

Police

STATE POLICE, MILTON
Disorderly Conduct 10:20 p.m. September 5, on River Road, in White Deer Township. A known actor engaged in tumultuous behavior.
Retail Theft 2:10 p.m. September 7, in Wal-Mart, at 120 AJK Blvd., in Kelly Township. Amy Piaggio, 35 and Teena Hinckley, 26, both of Sunbury, concealed numerous items on their person and in a shopping cart. They attempted to leave the store without paying. Total value of the items was \$176.72. Charges will be filed in District Court 17-3-01.
Retail Theft 4:30 p.m. September 7, in Wal-Mart, at 120 AJK Blvd., in Kelly Township. Michael Edward Martini, 53, and Mary Ellen Martini, 53, both of Watsonstown, removed \$214.07 in merchandise from the store. They were apprehended by Loss Prevention. Mrs. Martini was jailed on a probation violation detainer. Both are charged with felony retail theft.
DUI/Hit and Run 2:20 p.m. September 8, on SR 642 and Old Rt. 15, in Kelly Township. A known suspect operated a vehicle while under the influence of a controlled substance. The suspect made a left turn onto SR 642 from Old Rt. 15 while on SR 642 they crossed over the center line and sideswiped a vehicle. The suspect then continued on.
Retail Theft 5 p.m. September 7, in Wal-Mart, at 120 AJK Blvd., in Kelly Township. Brittney Phillips, 19, of Houston, TX, attempted to leave the store with items she did not pay for. Total value of the items was \$63.06. Charges will be filed in District Court 17-3-01.
Crash 8:05 a.m. September 7, on Crossroads Drive, east of JPM Road, in Kelly Township. A vehicle driven by Albert Smith, 52, of Lewisburg, was traveling east on Crossroads Drive towards West Milton. A vehicle driven by Melanie Fisher, 30, of Lewisburg, having clearance to enter the roadway, had turned east off JPM Road onto Crossroads Drive and was attempting to pull into a driveway. Smith could not stop in time and attempted to pass Fisher in the left lane while Fisher was executing her turn. Smith struck the driver side front door of Fisher's vehicle, causing it to rotate approximately 360 degrees clockwise across both lanes coming to rest in a field south of Crossroads Drive. Smith stopped his vehicle along the shoulder of the eastbound lane of travel. Smith was not injured. Fisher and her passenger Rebecca Thierwechter, 53, of Wellsboro, PA, sustained minor injuries and were both transported to Evangelical Community Hospital for treatment. Assisting on the scene were the Milton and White Deer Fire Departments. Kelly's Texaco towed both vehicles. Smith will be cited for a traffic violation.
Theft Early June 2012, reported on September 6, 2012, residence on Crestview Drive, in Union Township. Patricia Ann Leighow, 48, of Winfield, discovered that a hard drive of an old computer had been removed by the 16 year old male juvenile. The juvenile was interviewed and admitted to the theft of the hard drive which was estimated to be worth approximately \$150. Charges were filed through the Union County Juvenile Probation Department.
Propulsion of Missiles 3 p.m. September 8, at 3900 Spruce Run Road, in White Deer Township. Two young white males were operating a white Mitsubishi Eclipse which was traveling along Spruce Run Road. One of the males threw a hard object at the vehicle of Connie Lee Leese, 54, of Hummelstown, that was parked along the road. The object struck the driver's side tail light, breaking it. The actors fled west on Spruce Run Drive towards the State Game Lands. Anyone with information is asked to contact police at 524-2662.
Theft by Deception 12:23 p.m. September 8, in Wal-Mart, at 120 AJK Blvd., in Kelly Township. A known actor removed a device turning an iPhone into a universal remote control from a store shelf. The actor proceeded to the customer service counter where the device was returned as if he had purchased it and the actor received its value on a gift card. Charges will be filed in District Court 17-3-01.
Crash 10:34 p.m. September 10, on New Columbia Road, approximately a quarter mile west of Pleasant View Road, in White Deer Township. A 1999 Plymouth Neon driven by a 17 year old male, of New Columbia, was traveling west on New Columbia Road and failed to negotiate a left hand curve. The vehicle traveled off the north side of the roadway and struck a fence then crossed a driveway and traveled over a small embankment, striking a lawn mower and a small shed. The driver sustained minor injuries. He was charged with a traffic violation.

Chubb's Auction Prices
The following items were sold on **Thursday, September 6, 2012**
First Cut Mixed Hay: \$105 per ton; Grass Hay: \$125 per ton; Second Cut Alfalfa Grass: \$115 per ton; Ear Corn: \$270 per ton; Oats Straw: \$150 per ton; Rye Straw: \$110 per ton; Firewood: \$35 per load.

Middleburg Livestock Auction
The following items were sold on **Tuesday, September 11, 2012**
Timothy: \$125 per ton; Grass: \$170 to \$260 per ton; Mixed: \$85 to \$185 per ton; Straw: \$145 to \$160 per ton; Ear Corn: \$215 to \$280 per ton; Barley: \$11.50 per bushel; Oats: \$4.50 to \$6 per bushel; Timothy Seed: \$61 per bushel; Rye: \$11 to \$11.25 per bushel; Firewood: \$35 per load; Calf: \$5 to \$120 per hundred; Fats: \$75 to \$123.50 per hundred; Cow: \$10 to \$85 per hundred; Bull: \$30 to \$99 per hundred; Feeder: \$30 to \$140 per hundred; Hogs: \$32 to \$61 per hundred; Pigs: \$18 to \$31 per head; Sows: \$10 to \$49 per hundred; Boars: \$11.50 to \$33 per hundred; Sheep: \$30 to \$62 per hundred; Goat: \$20 to \$142 per head; Lamb: \$85 to \$147 per hundred; Cull Pig: \$16 to \$32 per head; Dairy Cow: \$300 to \$1,400 per head; Dairy Heifer: \$45 to \$1,275 per head; Dairy Bull: \$375 to \$925 per head.

Buffalo Valley Auction Prices
The following items were sold on **Tuesday, September 11, 2012**
Produce: Apples: \$5 to \$25 per half bushel; Green Beans: \$4 to \$12 per half bushel; Lima Beans: \$8 to \$20 per half bushel; Yellow Beans: \$3 to \$10 per half bushel; Broccoli: 30¢ to 75¢ per head; Green Cabbage: 50¢ to \$1.50 per head; Large Cantaloupes: \$2.50 to \$3 per piece; Small Cantaloupes: 50¢ to \$1.25 per piece; Cauliflower: \$1.50 to \$2 per head; Cucumbers: \$12 to \$20 per bushel; Eggplant: \$6 to \$10 per bushel; Grapes: \$10 to \$15 per case; Candy Onions: \$6 to \$15 per half bushel; Peaches: \$12 to \$28 per half bushel; Pears: \$10 to \$20 per half bushel; Green Peppers: \$5 to \$8 per bushel; Hot Peppers: \$4 to \$8 per half bushel; Red Peppers: \$3 to \$10 per bushel; Pickles: \$8 to \$23 per half bushel; Plums: \$2 to \$3 per quart; Red potatoes: \$8 to \$12 per 50 pounds; Sweet Potatoes: \$9 to \$13 per 50 pounds; White Potatoes: \$10 to \$12 per 50 pounds; Red Beets: \$8 to \$12 per half bushel; Acorn Squash: \$7 to \$12 per bushel; Butternut Squash: \$7 to \$12 per bushel; Yellow Squash: \$6 to \$12 per half bushel; Sweet Corn: \$1 to \$2.50 per ton, Cherry Tomatoes: \$1 to \$2 per pint; Plum tomatoes: \$6 to \$12 per half bushel; Sangria Watermelons: 75¢ to \$2 per piece; Seedless Watermelons: \$1 to \$4 per piece; Green Zucchini: \$2 to \$8 per half bushel; Yellow Zucchini: \$3 to \$6 per half bushel. **Flowers:** Mums: \$1 to \$5 per piece. **Pumpkins:** Large Face Pumpkins: \$85 to \$150 per 36 inch bin; Small Pumpkins: \$100 to \$175 per 24 inch bin; Gourds: \$5 to \$10 per half bushel; Goose Gourds: \$2 to \$3 per piece; Jack Be Littles: \$5 to \$10 per half bushel; Indian Corn: \$1 to \$3 per bunch; Neck Pumpkin: \$2 to \$3 per piece.

Courts

Deeds:
Robert B. Brittain to Robert B. Brittain Trust & Rana S. Denham property in Hartleong for the sum of \$1.00.
Elwood Dots & Oliver Elwood Dotts & Frances S. Dauberman to George D. Kelbatyrov & Olga Kelbatyrov property in Lewisburg Borough for the sum of \$75,000.00.
Roger A. Holtzapple & Betty Jean Holtzapple to George G. Holtzapple & Betty Lee Holtzapple property in Lewisburg Borough for the sum of \$50,000.00.
Karen D. Lin to Gerald E. Lynch III & Petra S. Lynch property in East Buffalo Township for the sum of \$600,000.00.
Guy Leroy to Daniel E. Leach & Brandy J. Leach property in Mifflinburg Borough for the sum of \$75,000.00.
Kimberly A. Crawford & Kimberly A. Moore to Kimberly Crawford property in White Deer Township for the sum of \$1.00.
Wells Fargo Bank & Homeward Residential & Option One to Colby M. Snook & Casey L. Snook property in Lewis Township for the sum of \$116,000.00.
Daniel M. Keefer Jr. & Gladys C. Keefer & Kathy D. Fowler & Daniel D. Eifert Sr. to Daniel M. Keefer Jr. property in Hartley Township for the sum of \$1.00.
Jack Kessler & Willard J. Kessler to Paul L. Walker property in Hartley Township for the sum of \$2,500.00.
Steven P. Boob & Mo Thi Boob to David W. Heddings & Samantha K. Heddings property in Buffalo Township for the sum of \$1.00.
Jean E. Bingaman to Darren Smith & Tonya Smith property in New Berlin for the sum of \$100,000.00.
Mary Beth Griffith & Franklin J. Griffith to Barbara H. Mummey & Barbara H. Mummey property in East Buffalo Township for the sum of \$1.00.
Mary Beth Griffith & Franklin J. Griffith & Barbara H. Mummey to Mary Beth Griffith & Franklin J. Griffith property in East Buffalo Township for the sum of \$1.00.

Marriage Licenses:
Joseph Lee Lyons, Millmont to Jaime Leigh Gusler, Mifflinburg
Justin Lee Chappell, New Berlin to Amanda Marie Shellhammer, New Berlin
Kevin Floyd Klinger, Northumberland to Johanna Lynn Smith, Mifflinburg
Robert John Varney, Lewisburg to Darlene Marie Rowe, Lewisburg
Robert Paul Rung, Shamokin Dam to Kendra Marie Huffman, Muncy

Divorce Decrees:
Douglas W. Shaffer, Middleburg from Kyla Shaffer, Millmont they were married for 3 years.
Denise Coates, Mifflinburg from Shamaar Domico Coates, Williamsport they were married for 5 years.

DISTRICT JUDGE LEO ARMBRUSTER, LEWISBURG
Charged Brian Keith Shreffler, 38, of Stimely Road, in Lewistown, with driving under the influence of alcohol with general impairment, driving under the influence of alcohol with a high blood alcohol level of 0.141 percent, and careless driving on September 4. A preliminary hearing is scheduled for October 11, at 9 a.m.
Charged Damon Charles Marciniak, 18, of Market Street, in Lewisburg, with theft by unlawful taking, and receiving stolen property on September 4. A preliminary hearing is scheduled for October 4, at 10:30 a.m.
Charged Steven Anthony Gallo, 54, of Chestnut Street Upper, in Mifflinburg, with retail theft on September 4. A preliminary hearing is scheduled for October 4, at 11 a.m.

DISTRICT JUDGE JEFFREY MENSCH, MIFFLINBURG
Charged Ty D. Miller, 21, of Lynn Street, in Mifflinburg, with possession of a controlled substance on September 4. A preliminary hearing is scheduled for October 2, at 2 p.m.

PA Lottery Results
Results for 9/5/12
Daily Number (Mid-day): 7 9 6
Daily Number (Evening): 4 1 3
Big4 (Mid-day): 3 6 9 0
Big4 (Evening): 9 2 6 3
Quinto (Mid-day): 3 4 7 6 5
Quinto Double Draw (Mid-day): 1 3 1 0 3
Quinto (Evening): 1 8 3 1 9
Treasure Hunt: 02 03 12 25 27
Cash 5: 03 06 15 16 37
Powerball: 04 19 26 42 51
PB: 29
Results for 9/6/12
Daily Number (Mid-day): 0 0 4
Daily Number (Evening): 0 7 0
Big4 (Mid-day): 8 4 0 4
Big4 (Evening): 7 7 1 6
Quinto (Mid-day): 5 6 7 1 7
Quinto (Evening): 5 1 7 1 0
Treasure Hunt: 01 08 15 18 23
Cash 5: 01 03 11 29 35
Match 6: 03 04 13 30 35 44
Results for 9/7/12
Daily Number (Mid-day): 0 9 8
Daily Number (Evening): 0 6 4
Big4 (Mid-day): 3 4 1 1
Big4 (Evening): 7 4 5 7
Quinto (Mid-day): 7 0 8 4 0
Quinto (Evening): 0 7 6 4 2
Treasure Hunt: 07 14 16 20 22
Cash 5: 03 13 21 24 31
Mega Millions: 15 32 38 42 46
MB: 31
MP: 04
Results for 9/8/12
Daily Number (Mid-day): 6 0 2
Daily Number (Evening): 2 6 0
Big4 (Mid-day): 2 6 4 3
Big4 (Evening): 8 4 4 7
Quinto (Mid-day): 7 3 2 9 8
Quinto Double Draw (Mid-day): 0 6 0 9 9
Quinto (Evening): 2 9 7 9 5
Treasure Hunt: 01 08 10 11 29
Cash 5: 28 32 36 37 40
Powerball: 06 20 34 44 48
PB: 29
Results for 9/9/12
Daily Number (Mid-day): 2 7 3
Daily Number (Evening): 3 7 8
Big4 (Mid-day): 1 8 1 1
Big4 (Evening): 6 2 8 8
Quinto (Mid-day): 5 4 6 3 2
Quinto (Evening): 5 6 4 4 6
Treasure Hunt: 01 12 17 19 20
Cash 5: 16 29 38 39 42
Results for 9/10/12
Daily Number (Mid-day): 8 0 1
Daily Number (Evening): 0 4 6
Big4 (Mid-day): 7 2 6 5
Big4 (Evening): 4 6 2 8
Quinto (Mid-day): 2 1 9 5 7
Quinto (Evening): 7 7 7 6 9
Treasure Hunt: 16 26 28 29 30
Cash 5: 04 07 26 38 43
Match 6: 01 08 15 25 27 32
Results for 9/11/12
Daily Number (Mid-day): 4 9 7
Daily Number (Evening): 6 7 1
Big4 (Mid-day): 5 8 2 2
Big4 (Evening): 3 7 8 1
Quinto (Mid-day): 9 1 7 4 2
Quinto (Evening): 8 1 4 3 2
Treasure Hunt: 04 20 24 26 29
Cash 5: 07 31 33 34 39
Mega Millions: 05 11 20 33 36
MB: 11
MP: 03

©1997 Snyder/Union County Times, Inc.
405 East Main Street, Middleburg, Pa. 17842
Telephone: 570-837-6065 Fax: 570-837-0776
Email: scuc@ptd.net
Hours: Monday, Tuesday, & Wednesday 8-4
Publisher/Owner: Susan Weaver
In-Office Staff: Angela Brouse, Valerie Hollenbach & Jessica Whipple
Advertising Staff: Brian Sheeler & Donnie Hackenberg
Editor: Honey Hipple

The Union & New Berlin Gazette were merged to become the Union Times in 1822 and this was the start of the Union County Times. Standard postage paid at Post Office, Middleburg, PA 17842. Send all address changes to Snyder County Times, Inc., P.O. Box 356, Middleburg, PA 17842.

Subscription Rates: Businesses \$31.00 in county, residents \$36.00 out of county, \$45.00 out of state, \$55.00 out of country. News stand 50 cents.

Submission policy: The Snyder County Times reserves the right to reject or revise any copy which considers objectionable, either because said copy is not keeping with usual newspaper standards of propriety or for any other reason deemed material by the Publisher. In any event, the advertiser or advertiser's agency assumes liability for the content of all advertising copy printed and agrees to hold harmless from all claims arising there for made against the Snyder County Times or its subsidiary publication. Publisher is not responsible for copy omission, typographical errors, or any unintentional errors that may occur in advertisement. Liability of Publisher is limited to only amount of space consumed by such error. All advertising accepted on this basis. All submissions must include the sender's name, address and daytime telephone number.
Deadlines: Articles and Display advertisements must be submitted by 12 noon Wednesday to be considered for publication. Community Events must be submitted by 12 noon Monday. There will be no exceptions to this rule.

Photographs: Snyder County Times Inc. is not responsible for the safe return of any photograph. Photographs submitted can be picked up at the newspaper office or sent back with a self-addressed envelope with a stamp.
Articles: Snyder County Times Inc. reserves the right to accept, reject and edit all submitted articles. To be considered for publication, articles must include the sender's name, address and a daytime telephone number. The Snyder County Times is not responsible for errors due to hand written copy. Articles will be printed on a First Come First Serve Basis.
Emails: Snyder County Times Inc. reserves the right to accept, reject and edit all submitted articles. To be considered all emails MUST have include the sender's name, address, a daytime telephone number, and a subject line. The Snyder County Times is not responsible for typographical errors in emails.

We mail to over 15,000 households in Snyder County and over 9,000 in Union County. Opinions are not necessarily the same view of the Newspaper or Management.
Member of the Pennsylvania Newspaper Publishers Association.

Yoga at the Herr Library

Carol Hollister will be leading a series of yoga classes on Mondays, Wednesdays, and Fridays throughout September at the Herr Memorial Library, Mifflinburg.

Book Signing

Lois Huffines, author of Images of America Mifflinburg and the West End signs a copy of the book for Mifflinburg Mayor David Cooney. The book signing was part the program "A Photographic Journey through Mifflinburg" presented by Huffines and photographer John Dersham at the Herr Memorial Library. The book can be purchased at the library or through the Union County Historical Society.

Princess Party at the West End Library

The West End Library is hosting 'Pinkalicious' Glamour and Glitter Day at 10:30 a.m. Saturday, September 29 at the library.

Preschool and elementary-school-age girls are invited to play dress up—with lots pink bling—and join in the fun! There will be cupcake decorating, a magical wand craft project, and stories read aloud featuring 'Pinkalicious' by Victoria Kann.

Registration is required by calling 570-922-4773 or visiting the library at 45 Ball Park Road, Laurelton.

National Library Card Sign-Up Month

The Union County Library System is celebration National Library Card Sign-Up Month throughout September! Stop in at any of the three Union County libraries--The Public Library for Union County, Lewisburg; Herr Memorial Library, Mifflinburg; and West End Library, Laurelton--and get your free library card. Branden Limauro, age 10, recently got his library card at The Public Library for Union County in Lewisburg.

Tell us what you think!

The Union County Library System would like to hear from you!

Each library in the system—The Public Library for Union County, Lewisburg; Herr Memorial Library, Mifflinburg; and West End Library, Laurelton—will be conducting an online survey about our website, social media, and technology beginning September 10.

Our goal is to learn how to better connect with patrons and community members about upcoming programs, new materials, and information about the library and its services.

Taking the survey is simple: Log onto any of the libraries' websites—www.publibuc.org, www.herrlibrary.org, or www.westendlibrary.org—and click on the button for "Take Our Survey." Answer the questions and click submit! It's that easy! All answers are anonymous and confidential and your information will only be used within the Union County Library System.

The UCLS looks forward to hearing your opinions and creating great ways to share information with you in the future!

Library, Cooking Club to host Edible Book Contest

Do you like to play with your food? If so, why not enter the Edible Book Contest, hosted by the Public Library for Union County and the Lewisburg Cooking Club.

Children, teens and adults are encouraged to enter this unique, one-of-a-kind contest, which will be held at 6:30 p.m. on Monday, October 22 at The Public Library for Union County. Professional food artists are encouraged to enter as well, in the professional category.

Entries must represent a title, major character or theme of a book and be made of 90% edible material and foodstuffs—10% non-edible material may be used for props. All entries must be room-temperature-tolerable.

Entries will be judged a panel of local judges. Ribbons will be awarded for first-, second-, and third-place winners in each category—children (5-12), teens (13-17), adult (18+) and professional. There will also be a People's Choice Award for Best Edible Book, voted on by library patrons. Judging will being at 7 p.m. and winners will be announced at the conclusion of the event.

Deadline for registration is October 15, 2012 and all entries should be delivered to the library at 255 Reitz Blvd., Lewisburg between 4 p.m. and 6:30 p.m. on October 22. For more infor-

mation, complete contest rules or a registration form, visit the library or call 570-523-1172. Information and registration forms are also available on the library's website at www.publibuc.org.

Obituaries

Hannah Meadow, 89, Lewisburg

LEWISBURG — Hannah Meadow, 89, of the Heritage House, 350 N. Third St., passed away on Tuesday, September 4, 2012, at her home.

A graveside service will be conducted September 23, at the Temple Israel of Catskill, N.Y., Cemetery.

Sara Jane Correy, 89, Lewisburg

LEWISBURG — Sara Jane Correy, 89, of Buffalo Road, Lewisburg, passed away on Wednesday, September 5, 2012, at the Buffalo Valley Lutheran Village, Lewisburg.

Graveside services were conducted at 11 a.m. Saturday, September 9, in Harmony Cemetery, Milton, with the Rev. Theodore Cockley, officiating.

Kenneth Franklin Erdley, 97, Lewisburg

LEWISBURG — Kenneth Franklin Erdley, 97, of Lewisburg, entered into rest at 3:11 p.m. on Wednesday, September 05, 2012, at his residence.

A memorial service to celebrate Ken's life will be conducted at 1:30 p.m. on Saturday, September 15, at the Dominick T. Adamo Funeral, 247 Chestnut Street, Mifflinburg.

Burial will be in the Pleasant View section of the Mifflinburg Cemetery.

John D. Prah, 92, Lewisburg

LEWISBURG — John D. Prah, 92, of Lewisburg, passed away on Sunday evening, Sept. 9, 2012, at RiverWoods, Lewisburg.

A Mass of Christian Burial was celebrated at 10:30 a.m. Wednesday, September 12, at Sacred Heart Church, Lewisburg, with the Rev. Michael Laicha as celebrant.

Burial was in the Lewisburg Cemetery.

Brand-New Wigs & Head Coverings Available

Through the American Cancer Society Making Strides Against Breast Cancer Greater Susquehanna Area event, free, brand-new wigs and head coverings are available to those with cancer.

Free synthetic and real-hair wigs are available at local wig programs throughout the area including Selinsgrove, Lewisburg and Danville.

Head coverings like scarves are available as well. "We have generous volunteers who hand-make some of the head coverings we have. We are very lucky to have such dedicated and caring people," said Dawn Spuesens, Health Initiatives Representative.

If you or someone you know is in need of a free wig or head covering, please call 1-800-227-2345 to schedule an appointment. Appointments are required.

The Making Strides Against Breast Cancer Greater Susquehanna Area event is scheduled for Saturday, Oct. 27 this year. In its second year, the event raises awareness about breast cancer, honors those battling the disease, and remembers those who lost the fight.

To learn more about forming a team or registering as a survivor, please visit www.makingstrideswalk.org/susquehannavalley.

MIFFLINBURG HOSE COMPANY
8TH ANNUAL FALL FESTIVAL

Saturday, September 22nd, 2012

Classic Car Show

Sponsored by: B.Z. Motors Chrysler Jeep Dodge

Entertainment by: THE MUDFLAPS 1pm - 4pm

At the VFW Grounds, 10770 Old Turnpike Road

Food Stands on Site (Breakfast Starts at 7 am on Sat.)

Entertainment Including: Quoit Pitching Tourney, Child's Pedal Tractor Pull, Kids Coloring

Contest, Free Balloons & Barrel Train Rides

FREE PARKING AND ADMISSION

Tom Kleckner 570-716-1227 Check us out on Facebook at "Mifflinburg Hose Company."



BUSINESS DIRECTORY

Signs

WE STICK TO IT...
POTOSKI DECAL SERVICE
RT. 45 Millmont, PA
(570) 922-3361
www.westicktoit.com

- Truck Lettering • Quality Banners
- Magnetic Signs • Window Graphics • Custom Stripes • Job Site Signs
- Custom Labels • Vehicles Wraps • Building Letters • Gift Certificates

Remove & Install

Equipment Rental

Middleburg Rental Center

Quality Equipment For Rent At Affordable Prices Since '03

Propane Refills

(570) 837-1167

8924 Rt. 522 • Middleburg, PA 17842

Door Service

America's Favorite Garage Doors

Residential & Commercial Sales & Service

BUFFALO VALLEY DOOR SERVICE

Along Rt. 104 S. Mifflinburg, PA 17844
570-966-4064

Clipay PRO-SERIES

HYDRAULICS

ZIMMERMAN'S HYDRAULICS

Hydraulic Cylinder Repair

1190 Strickler Road Mifflinburg, PA 17844

570-966-2762

Quilting

Paulette's Quilting Place

Long Arm Quilting Custom Quilting

2608 Red Bank Road Middleburg, PA 17842

From Rt. 104, turn right on Red Bank Road and go 1 1/4 miles to the brown barn on the left at Redcourt Lane!

539-8402

Sewing

HOEVR'S BERNINA SEW LLC

Hours: Mon., Wed. & Thurs. - 9am-4pm; Tue. & Fri. - 9am-8pm; Sat. - 9am-3pm

966-3822

2282 Beaver Road Mifflinburg, PA 17844

LAWN & GARDEN

Harry's LGC LAWN & GARDEN CENTER

402 Main Street Hartleton, PA 17845

COUNTRY CLIPPER First With Innovations That Last ZERO TURN MOWERS

GARDEN SEEDS & SUPPLIES

570-922-4302

Auto Repair

White Spring Repair

(570) 966-9241

- Starters
- Alternators
- Generators
- Batteries • Cables

Rebuilding Starters, Generators, Alternators, Electrical System Analysis

1 mile S. of Mifflinburg

Appliance Repair

PEACHEY'S Appliance Repair

WE FIX: Washers, Dryers, Dishwashers, Ranges, Refrigerators, Freezers

For Service Call: (570) 966-3322

For Parts Call: 1-877-382-4936

Vacuums

Chatham's Vacuums

113 Market Street, Lewisburg

(570) 522-8116

Riccar "The First Name in Vacuums That Last"

We Service Most Makes and Models

Evangelical Community Hospital has scheduled its roster of support groups for the month of October. They are as follows:

• Alcoholics Anonymous: Sundays, Noon-1 pm and Wednesdays, 7 pm, in Wood-Mode Conference Room, located on the Hospital's Lower Level.

• Look Good Feel Better: Monday, October 1, 10 am-noon at the Community Health Education Center. Done with the American Cancer Society, Look Good...Feel Better program is a free, national public service program that helps women cancer patients improve their appearance and self-image by teaching them hands on beauty techniques to manage the appearance side effects of chemotherapy and radiation treatments.

• Celiac Discussion Group: Tuesday, October 2, 6:30 pm in D&E Conference Room, located across the hallway from the Hospital's Central Registration.

• Weight Management: Tuesday, October 2, 6:30 pm at the Community Health Education Center.

• Bariatric: Wednesday, October 3, 6:30 pm, in Apple Conference Rooms A&B, in the rear of the dining room at Evangelical Community Hospital. This will include a description and video of Gastric Bypass Surgery and Adjustable Gastric Band Surgery.

• Cancer: Monday, October 8, 7 pm, in the Middleburg Community Room

• Multiple Sclerosis: Tuesday, October 9, 6:30 pm, at the Community Health Education Center. All meetings are open to all concerned with the issues of MS.

• National Alliance on Mental Illness (NAMI): Thursdays, October 11 and 25, 6:30 pm at the Susquehanna Valley Mall, Community Zone.

• Empty Arms: Monday, October 15, 7 pm at D&E Conference Room, located across the hallway from the Hospital's Central Registration. Support group following the loss of a baby. Please call Community Health Education to register.

• Better Breathers Club: Wednesday, October 17, 6 pm, at the Community Health Education Center.

For more information on any of these support groups, please call Community Health Education at (570) 768-3200 or visit www.evanhospital.com.

Classifieds

CLASSIFIEDS

Help Wanted

Drivers: \$1,000 Sign-On Bonus, Dedicated Account! Competitive Pay, Benefits, Weekly Home-Time & More! Werner Enterprises: 1-866-823-0268

Help Wanted: Cleaning person for Mifflinburg VFW. Call (570) 966-9254 or apply within.

Drivers: Owner Ops in Harrisburg. Excellent money per mile plus fuel. Paid tolls using EZPASS, Home Daily. Sign on Bonus. Up to \$5000.00 paid in 10 weeks. 888-399-5856.

For Sale

For Sale: Two male black & tan coonhound puppies. UKC registered. Parents are excellent hunters. Call (570) 374-8265.

For Sale: ProForm J8 Treadmill which works fine. \$99.00 OBO; Sharp TV (old style) works fine and would be great for video games too. \$25.00 OBO; Magnavox 13 inch digital/analog TV with built in DVD Player and remote \$25.00 OBO; All sold as is! Cash only. Call (570) 743-9235.

For sale: 18 cu. black Kenmore Refrigerator, automatic ice maker \$175; Blue metal, 2 seat porch glider, \$40. Call (570) 539-8496.

For Sale: China hutch \$275; wooden toy box, \$50; costume clip-on earnings, best offer. Call (570) 837-5153.

For Sale: Mapex 5PC Drum Set, \$475; HP Pavilion Ent

DV5Z-1000, \$350; Cessna 182 R/C RTF, \$285. Call (570) 274-3429.

For Sale: kittens. to a good home. Call Kevin (570) 473-7336.

For Sale: Brand new solid pine twin over full bunk bed, medium honey color, 82 1/4 in long, 68 in high, and 58 1/2 in wide, \$495; Brand new solid pine twin over twin bunk bed with large storage drawers underneath, medium honey color, 80 in. long 68 in. high, 48 1/4 in. wide, \$389. Call (570) 490-4283.

For Sale: Homelite 16" chain saw, works \$40; utility cart \$15; material pieces \$2/bag; 7 qt. canner \$10; corn dryer \$20; porcelain table w/4 chairs \$95; white metal storage cabinet - h-60, 2-door w-22 d -11 \$40; single/twin wooden bed frame \$20; 6 ft wooden step ladder \$10; double/full brass bed frame \$30; industrial shop vac, 20 gallon \$25; leaf rakes (metal, plastic or bamboo) \$2-4. Call (570) 837-3564.

For Sale: Boyds Bears all sizes and some accessories. Also have 2 Boyds Christmas items from the Danberry Mint that light up all in excellent condition. Call (570) 966-3086 after 4 p.m.

In 1956 Massey Harris Ferguson were building the collector tractors 35, 40 and MH 50. Yes we have them priced from \$2700 to \$3300. Also older ponies and the MH 30 \$1275. One bottom plow for Silver King. 3 bottom fast hitch plow. Farmal A with plow and cultivator \$1700. Farmal C with loader \$2100. 3 pt. and pull type spreaders.

10 ft. Brillion packer. New 6 ft. 3 pt. Bush Hog type cutter \$975. Only one. Several more new and used cutters. Hesston PT 10 and 1120 mower conditioners. Horse pasture harrow. Used Farmal H rim, several new rims for Super C, Ford and Ferguson. Two used bale throwers. Hesston, Vicon and Brillion parts since 1949. Don Erdley, Lewisburg, (570) 524-2410.

Yard Sale

Yard Sale: Wed., October 10, from 8 a.m.-2:30 p.m., at St. John's UCC on Buffalo Road, Lewisburg.

Heister Valley Yard Sales: September 13 & 14, at small pavilion at Graybill's Grove.

Porch Sale: at Slifer House Museum, September 15, from 10 a.m. to 4 p.m., at 80 Magnolia Drive, Lewisburg on the campus of RiverWoods Senior Living Community. Rain or shine. All proceeds of the sale directly benefit the museum.

Yard Sales: Meadow Green Development, September 12-15. Rain or Shine.

Large Multi-family garage sale: Friday, September 21 & Saturday, September 22, from 7:30 a.m.-4:30 p.m., at 2351 Hetrick Road, Beavertown. Turn at OIP's onto Hetrick Road, 3/10 miles on right side ranch house. Watch for balloons & signs.

Porch Sale: Wednesday, October 10, from 8 a.m.-2 p.m., in front of Brookpark Farm Furniture, Rt. 45 west of Lewisburg. Fall sale raising funds to help women further their educations.

Huge Yard & Basement Sale: September 14 & 15, from 8 a.m.-6 p.m., at of 230 Mahoning St. Milton. Rain or shine.

Multi-family Garage Sale: September 19, from 8 a.m.-3 p.m., at LARA Gymnastics Center, 2010 W. Market St., Lewisburg.

Lewisburg Moving Sale: September 19, beginning at 8 a.m., at 337 Strawbridge Rd., Lewisburg. Rain or shine. Second house on left off Rt. 192.

Garage Sale: Friday evening, 4 p.m.-8 p.m., and Saturday, 12 noon -6 p.m., at 3 S. Brown St., McClure, (2 blocks from the Bean Soup).

Charter School Proposed For Union And Snyder Counties

A coalition of local parents, educators, and community leaders seeks to create the area's first brick-and-mortar charter school. Dubbed "The New Berlin Charter School", the school will offer grades K-4 in its first year and K-5 in subsequent years.

The school will have an integrated curriculum in which subjects are taught together: instead of dividing the classes into separate subjects, an activity might involve art and math together, or science and history together. The themes of sustainability and environmental awareness are integral to the school's mission, with educational field trips and outdoor activities a regular part of the instruction in every grade.

The New Berlin Charter School will be a public school, open to everyone, and free to all students. "Unlike most cyber charter schools, which are run by a company out to make a profit, this charter school will

be run by members of the community," said coalition leader Vince Stoops of Selinsgrove.

Coalition member Samantha Pearson of Lewisburg clarified the school's theme of sustainability. "This means that the school will use sustainable resources and will save money in the long run by being as energy efficient as possible. Environmental awareness means that recycling will be taken seriously and the students will come to see conservation of resources as an important part of life. It means an appreciation for mountains, woods, and streams and the many ways in which they are used. It means that local farms will be visited frequently, to see the cycle of work at different types of farms, and to help children understand the interconnected web of activity that makes modern life possible."

The school is open to students in the Mifflinburg, Lewisburg, and Selinsgrove school districts.

By Pennsylvania law, a lottery is used if there are not enough spaces available for the students who sign up. "We want to offer an alternative for parents who are looking for a different educational opportunity for their children," said coalition member David Farmer of New Berlin.

Marie Smith of Mifflinburg summed up the school's appeal: "Our environmental focus, instructional style, and small school size are more appropriate for some students."

The next step in the group's quest to start a charter school is a public hearing at 7 p.m. on September 18 in the Mifflinburg High School auditorium. This is a combined hearing with the school boards of the Lewisburg, Selinsgrove, and Mifflinburg school districts. All interested parties are invited to attend.

More information is available at the website <http://newberlincharterschool.org/>.

Evangelical Community Health Gives You Tools to Change Your Lifestyle a Day at a Time

Throughout the year Evangelical Community Health Education partners with Highmark insurance to provide programs that educate individuals on how to make changes to their lifestyle that will ultimately lead to better health. Each program is open to the public with no or reduced rate registration fee for Highmark participants.

Fall brings a host of programs on stress, diet, lifestyle choice and nutrition each targeting different areas of life that can promote better health. All classes require registration. For information about any of the classes and how they might work to help you change your lifestyle a day at a time or to register to take part, call Evangelical Community Health Education at (570) 768-3200.

Daily Steps to Less Stress
Stress affects everyone – and it can take a toll on the human body. The "Daily Steps to Less Stress" class helps get to the root of stress and manages it through practical relaxation techniques and innovative stress management strategies. From coping skills to visualization, to progressive muscle relaxation and humor therapy participants acquire effective tools to deal with stress. This class will be held Wednesdays, September 5th through the 26th from 6-7:30 pm at Evangelical Community Hospital. The fee is \$65 each or free for Highmark participants.

Drop 10 in 10
Studies show that reducing weight by 10 percent can reduce the risk or improve the management of chronic diseases associated with excess weight, such as high blood pressure, heart disease and diabetes. The "Drop 10 in 10" class is a 10 week management program designed to help participants lose 10 pounds (or 10 percent) of their body weight through an engaging program of optimal nutrition, regular exercise and behavior change. The program includes a combination of educational lectures, experiential or direct experience activities, self-study, self-monitoring and personal goal setting. Drop 10 in 10 is designed to help individuals move away from the "all or nothing" mentality of fad dieting to the philosophy of making meaningful and long-lasting nutrition, exercise and lifestyle changes.

Proven that people are more successful when they team up for weight loss, participants are encouraged to enroll in the program with friends, co-workers, family members or to team up with a fellow participant to aid each other through encouragement, accountability, and motivation. "Drop 10 in 10" is running Wednesdays, September 5th through November 7th from 6-7:30 pm at Evangelical Community Hospital or Tuesdays, September 18th through November 20th from 8:30-10 am at the Community Health Education Center, Route 15, Lewisburg. The fee for the class is \$150 each or \$20 for Highmark participants.

Simple Choices, Profound Results
Each day we are faced with

choices, like what to eat, how to respond to stress, whether or not to smoke, how much to exercise and how to respond in our relationships – each of these can profoundly impact health, well-being and survival. The "Simple Choices, Profound Results" class is a scientifically-proven program to feel better, live longer and lose weight based on the best-selling book "The Spectrum" by Dean Ornish, MD.

Simple Choices is being held Tuesdays, September 11th through October 16th from 6-8 pm at the Community Zone in the Susquehanna Valley Mall. The class is \$65 each or free for Highmark participants.

Eat Well For Life
Everyone benefits from paying more attention to which types of foods are consumed daily. Even if weight loss is not a goal, taking the time to understand what foods do when they enter the body is helpful in increasing metabolism, boosting the immune system and building a defense against disease.

"Eat Well For Life" is a lifestyle improvement program promoting wellness and long-term weight management through increasing physical activity and healthy eating. Participants learn to make healthful food choices and are encouraged to adopt the nutrition practices needed to achieve a balanced lifestyle and long-term weight management.

This class will be held Thursdays, starting October 4th through the 25th from 8:30-10 am at the Community Health Education Center on Route 15, Lewisburg. The fee is \$65 each or free for Highmark participants.

DINING GUIDE

BOOMERANG'S

Prime Rib Every Friday Night Starting at 5pm - 14oz. \$15.95

Breakfast Specials Starting at 99¢ Mon. - Fri. Starting at 7:30 am

WINGS•SEAFOOD • CHAR-BROILED STEAKS

Rt. 45 - 5 Miles West of Mifflinburg

Hrs: Mon.- Sat. 7:30 am - 2:00 am; Sun. 11:00 am - 2:00 am

(570) 922-1232

Weekend Entertainment NO COVER

MIFFLINBURG VFW POST 1964
Rt. 45, Mifflinburg, PA 17844
Phone: (570) 966-9254
Mon. - Thurs. 2-11; Fri. & Sat. 12 - ?; Sun. 1 - ?

September 15 •10-1
Sucker Punch

September 22 •10-1
Faded Daze

September 28 •9-1
On The Spot Sound

October 5 •10-1
Armed & Ready

October 7 •4-7
Now & Then

Bands: \$5.00 Cover Charge
Non Members
Wings Every Thursday
5-8 • 14 Flavors
For More Info
Call 966-9254

MIFFLINBURG LEGION POST 410
320 Chestnut St., Mifflinburg
Phone: (570) 966-1301

Specials
Haddock Every Friday \$8.50

Friday, Sept. 14
Pork Chops \$8.50

Black Diamond \$11.75

On The Spot Entertainment

Friday, Sept. 21
Roast Pork Filling \$8.50

T-Bone \$11.25

Wild Bill Sounds

Union County Sportsmen Club
922-1128
PUBLIC WELCOME!

Mon. & Tues. - Closed
Wednesday - Medium 1 Topping Pizza & Pitcher of Beer or Soda \$9.00

Thursday - Hot Roast Beef Sandwich w/ Fries \$6.25

Friday - All You Can Eat Assorted Seafood Buffet \$12.25 (4:30 - 8:30)

Saturday, August 25
Prime Rib \$15.99
Fried Shrimp \$9.25

Sunday, August 26
Prime Rib \$15.99
Fried Shrimp \$9.25

Bar Hours: Wed., Thurs. 11am-9pm; Fri. & Sat. 11am-11pm; Sun. 11am-9pm
Dining Room Hours: Fri. & Sat. 4:30pm-8:30pm; Sun. 11am-8pm

★ **FLICKERS CAFE** ★
★ OPEN DAILY 7AM-2PM ★
★ **Daily Specials 9/14-20** ★
★ Friday: Fried Fish Sandwich ★
★ Side Special: Mac & Cheese ★
★ Saturday: Grilled Salmon on Salad ★
★ Soup: French Onion ★
★ Sunday: All You Can Eat French ★
★ Toast \$3.99 ★
★ Monday: Buffalo Chicken Sandwich ★
★ Soup: Cheesy Potato ★
★ Tuesday: Cheesesteak ★
★ Soup: Chicken Corn Noodle ★
★ Wednesday: Stuffed Bleu Cheese ★
★ Burger Soup: Tomato Basil ★
★ Thursday: Sausage or Dried Beef ★
★ Gravy over Home fries or Toast w/ ★
★ Coffee \$4.99 ★
★ Our Menu is Made Using Fresh ★
★ Ingredients from Scratch! ★
★ Star Hollow Candle Co & Flickers Cafe ★
★ 93 Bickel Rd, Middleburg ★
★ Located off Rt 104 2mile N of Middleburg behind L&L Market ★
★ 837-3850 www.starhollow.com ★
★ Open 10-6pm, Breakfast at 7am ★

WEIGHT LOSS WORKSHOP

Would you like to lose 1 to 2 lbs. per day and keep it off?

Dr. Michael Morrison will be hosting a free Weight Loss Workshop every Tuesday at 12:30 pm and Thursday at 7:00 pm for the month of September. The program is doctor supervised, safe, and easy to do, with **no exercise** required. Lose 30 lbs. in 30 days!

The Workshop will be held at 1205 W. Market St. Lewisburg. **Due to limited seating, reservations are required and can be made by calling 570-523-1221.**

Street of Shops Restaurant

Friday Specials

Baked Seafood Combo
Haddock, Shrimp and Scallops
(With two Sides) **\$11.99**

Prime Rib
(With two Sides) **\$12.99**

Crabcakes
(Premium lump crabmeat) **\$10.99**

Mon. - Thurs. 7am - 3pm • Fri. 6am - 8pm
Sat. & Sun. 6am - 4pm
SHOPS OPEN FRIDAY EVENINGS
100 N. WATER ST., LEWISBURG, PA • 570-523-0420

Lewisburg American Legion Post 182
125 Buffalo Rd., Lewisburg
(570) 524-7479

Wed Special Dozen Wings \$4.75 4 - 9 PM
Kitchen opens for lunch Thursday & Friday 11 AM
Lunch Specials Weekly

Friday Night Special FISH FRY \$8.95
11 AM - 8 PM
Plus Regular Friday Menu

Chicken Bar-B-Q Sat. Sept 29 12-4 pm
\$8 Dinner, 1/2 Chicken, Macaroni & Cheese, Baked Beans, roll & Butter \$5 for 1/2 Chicken

Eat In, Take Out & Walk In's Welcome
Music by Jim Wetzel & The Spastics

OPEN TO PUBLIC

Country Tavern

Steak & Seafood
Route 104, Middleburg • 570-837-7501

Sunday Buffet
10:30 a.m. to 2 p.m.

Chicken, Beef, Ham, Vegetable, Stuffing, Rolls, Dessert, Soda & Coffee

Lunch Buffet Monday Thru Friday 11 am - 2:30 pm

Monday & Thursday - Wing Buffet
Tuesday - Sirloin Steak or Fish Sand Basket

Wednesday - Black Diamond Steak or AYCE Haddock Nuggets
Friday & Saturday - Seafood Buffet

MIFFLINBURG MOOSE
437 Chestnut St. Mifflinburg
966-2022
Hours: Mon. - Thurs. 3:30 - 11 PM; Fri. & Sat. 3:30-12 AM

Dinner Specials 5:00 PM - 7:00 PM

September 14
Regular Menu, Levi 8-11

September 15
Cash Bash 4-6 pm
\$10.00 Tickets
Available at the Moose

September 21
Chicken & Waffles
Levi 8-11

September 22
Pot Pie Dinner at the VFW Grounds

Every Mon. Wings Every Wed. Hotdogs or Hamburger Every Thurs Reg. Menu

Mifflinburg Bank & Trust

Who do you trust?
your neighbors,
your friends,
your community!

Brian Neitz
Community Office Manager

Mifflinburg Bank & Trust
Your Community's Trusted Financial Resource

2894 N. Susquehanna Tr. | Ph. 570.743.6282 | Member FDIC
Shamokin Dam | www.mbt.com

84th Annual Beaver Community Fair

September 16-22, 2012

Snyder County's Only Agricultural Fair
 Beaver Springs, PA • Where Rt. 522 meets Rt. 235 South

SERVICE ANIMALS ONLY ALLOWED ON MIDWAY/IN EXHIBIT BUILDINGS
FREE ADMISSION

For more info click onto www.beaverfair.org

Sunday, September 16

10 am Registration for Open Youth/Adult Fun
 12 noon Open Youth/Adult Horse Show
 1-5 pm Register & Enter Exhibits
 6:30 pm Vesper Service/His Servants

Monday, September 17

9 am-5 pm Register & Enter Exhibits
 9 am Swine Show
 1 pm Goat Show
 6 pm Rabbit Show
 6 pm Fair Queen Pageant
 6:30 pm 4x4 Pickup Truck Pull
 7 pm Baked Goods Judged
 7 & 9 pm Special Friends
 7:30 pm Baked Goods Bake Sale

Tuesday, September 18

9 am-Noon Judging of Exhibits
 10 am SUN Area FFA Judging Contest
 1 pm Sheep Show
 2 pm Exhibit Buildings Open to Public
 (or after judging is completed)
 6 pm Kids Farm Games
 6:30 pm ATV Pulls
 7 & 9 pm Crossfire
 8 pm Hay Bale Throwing Contest

Wednesday, September 19

9 am Dairy Feeder Steer Show
 1 pm Beef Show
 6:30 pm Forestry Skills Contest
 7 pm Supreme Livestock Showman Competition
 Old-Timers Livestock Fun Show
 7 & 9 pm Rick K. and the Allnighters
 7:30 pm Tug-of-War

Horse Show (CVI required)
 Horse Arena
 Entry Room & Exhibit Buildings
 Stage

Discount Night at Participating Stands

Entry Room & Exhibit Buildings
 Inside Show Arena
 Inside Show Arena
 Inside Show Arena
 Stage
 Tractor Pulling Track
 Green Exhibit Building
 Stage
 Green Exhibit Building

Exhibit Buildings

Inside Show Arena

Inside Show Arena
 Tractor Pull Track
 Stage
 Horse Arena

Inside Show Arena
 Inside Show Arena
 Tractor Pulling Track
 Inside Show Arena
 Inside Show Arena
 Stage
 Tractor Pulling Track

Thursday, September 20

9:30 am Dairy Show
 6 pm Special Presentations
 6:30 pm Tractor Pulls
 6:30 pm 4-H & FFA Youth Livestock Sale and Milk and Cheese Sale
 7 & 9 pm The Moore Brothers
 8 pm Fair Quilt sold at Livestock Auction

Friday, September 21

6 pm American Legion Flag Retiring Ceremony
 6:30 pm Tractor Pulls
 7 & 9 pm Dusk 'til Dawn (Country)
 8 pm Animal Parade (Animal Exhibitors Only)

Saturday, September 22

9 am Garden Tractor Pulls
 10 am Horseshoe Pitching (Singles & Doubles)
 1 pm Kiddie Pedal Pull
 6:30 pm Tractor Pulls
 7 & 9 pm Daddy O' & Sax Maniax
 9 pm ATV Raffle Drawing
 11 pm Raffle Drawing

Inside Show Arena
 Inside Show Arena
 Tractor Pulling Track
 Inside Show Arena

Stage



Tractor Pulling Track
 Stage
 Inside Show Arena

Tractor Pulling Track
 Horseshoe Pitching Court
 Inside Show Arena
 Tractor Pulling Track
 Stage
 Tractor Pull Track
 Inside Show Arena



Rick K. & The Allnighters
 America's Most Exciting Show Band!

FREE PARKING
 \$3 ADMISSION Monday-Saturday - 5 and under FREE
 \$13 per person weekly pass, available at Gate and Fair Office
 \$5 ride wrist band available nightly
Commercial Buildings Open
 Monday-Thursday 4:00 pm – 10:00 pm
 Friday & Saturday Noon – 11:00 pm
Exhibit Buildings Open
 Wednesday-Saturday 11:30 am – 10:00 pm
Kids' Tent
 Tuesday-Saturday All Day

The 2012 Beaver Fair 4-H & FFA Livestock Auction

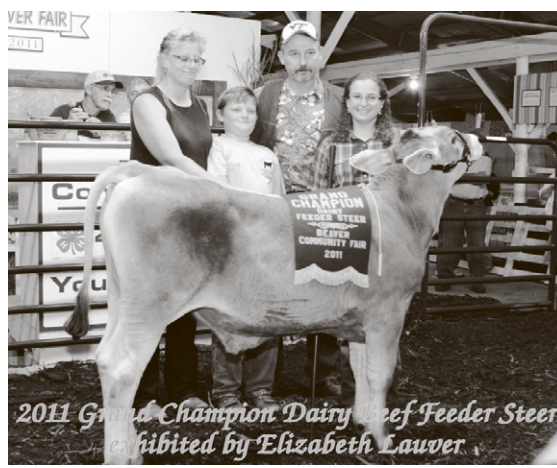
Thursday, September 20 at 6:30 p.m. • Special Presentations at 6 p.m.
 in the Livestock Arena, Beaver Community Fairgrounds, Beaver Springs

Market Hogs, Goats, Lambs, Steers, Dairy Beef, Meat Rabbits, Dairy Milk Bottles & Cheese Basket



2011 Grand Champion Market Steer
 exhibited by Blake Herman

2011 Grand Champion Market Steer
 Exhibitor: Blake Herman
 Buyer: Hoss's Steak & Sea House, Shamokin Dam



2011 Grand Champion Dairy Beef
 exhibited by Elizabeth Lauver

2011 Grand Champion Dairy Beef
 Exhibitor: Elizabeth Lauver
 Buyer: Middleburg Area Market & Auction LLC



2011 Grand Champion Market Goat
 exhibited by Rachael Elliott

2011 Grand Champion Market Goat
 Exhibitor: Rachael Elliott
 Buyer: Middleburg Area Market & Auction LLC



2011 Grand Champion Meat Pen Rabbits
 exhibited by Patricia Wagner

2011 Grand
 Champion Meat
 Pen Rabbits
 Exhibitor:
 Patricia Wagner
 Buyer:
 West Milton State
 Bank, Beaver Springs



2011 Grand Champion Single Fryer Rabbit
 exhibited by Patricia Wagner

2011 Grand
 Champion Single
 Fryer Rabbit
 Exhibitor:
 Patricia Wagner
 Buyer:
 Swineford
 National Bank,
 Middleburg



2011 Grand Champion Market Swine
 exhibited by Rachel Spigelmyer

2011 Grand
 Champion
 Market Hog
 Exhibitor:
 Rachel Spigelmyer
 Buyer:
 SUN Orthopaedic
 Group, Lewisburg



2011 Grand Champion Market Lamb
 exhibited by Rebecca Lauver

2011 Grand Champion Market Lamb
 Exhibitor: Rebecca Lauver
 Buyer: Middleburg Area Market & Auction LLC

A special thank you to our 2011 Livestock Sale Buyers:

Advanced Enterprise Service, Inc.; Ag Depot; Airy-Dale Farm Market; Aurand Brothers Fabrication and Repair; Aurand Mini Storage; B & K Construction; B & R Farm Equipment; BZ Motors; Beacon Insurance Agency; Beaver Creek Tractor; Becky Kerstetter Nationwide Insurance; Bierly's Meat Market; Bo-Ann Holsteins; Boop's Welding; Bryan D. Imes & Sons Auctioneers; CVC Mechanical Contractors; Cargill Animal Nutrition; Claddagh Farm; Country View Farms; David Rohrer Tire Service; Double B Farms; Dr. Shawn McLaughlin; Family Practice; Center, Mifflinburg; Farmer Boy Ag; Five Star Custom Farming; Flanders Farm; Foxboro Bed and Breakfast; George & Judy Frymoyer; George Farms Custom Butchering; Glass Construction; Glenn Holler Chimney Sweep; Go Jo Farm; Goss Forestry; Hallmark Feeds; Harold Bingaman; Hassinger & Courtney Auctioneers; Hauck's Equipment & Repair; Heister House Millworks; Hoffman Hill Farm; Homestead Nutrition Corporation; Hooper, Inc.; Hook's Suffolks; Hoss's Steak and Sea House; Hummel Funeral Home; Ivan Lauver & Sons; JJ Transport; Jerry Valentine Plumbing, Heating & AC; Jerry Wetzel; Jo-Gra Farm; Kauffman Farm Supply; Kauffman's TV; Keiser Butcher Shop; Kelly Ann Rabbitry; Ken Smith Farms & Auctioneering; Kerstetter Countertops; Kessler Poultry; Keystone Pre Cast; Kirby Agri; Kling's Auction Service; Kreamer Feed; Lauver & Longacre Auctioneers; Lester Stuck Building Supplies; Meily Farms; Meiserville Milling Company; Middleburg Area Market & Auction LLC; Mifflin County Savings Bank; Mifflinburg Farmer's Exchange Inc.; Mountain Dale Farm; N.H. Rigel Insurance Agency; On the Side Excavation & Landscaping; Orchard Crest Farm; Perfect Setting Party Rentals; Pine Hollow Forest Products, Inc.; Pioneer Hybrids; Pleasant Valley Greenhouse and Gifts; Richard's Portable Toilets and Septic; Rippers Ridge Club Lambs; Ritter Feeds; Roger Moyer's Garage & Motorcycle Repair; S & A Tires; S & M Catering; Sam Doak; Schlegel Screen Printing; Scott Kerstetter; Smith's Livestock Hauling; Snook Livestock; Snyder County Produce Auction; STE-WAN Farms; Stella Jones; Stumhofer Farms; Sunbury Animal Hospital; SUN Orthopaedic Group; Susquehanna Bank; Swineford National Bank; The Northumberland National Bank; Troyer's Transport; US Navy; Weaver Brothers Pallets; West Milton State Bank; Windview Truck and Trailer Repair; Wonder Why Farms; Wright Poultry.

Snyder County 4-H and FFA members appreciate your continued support of local agricultural programs.

Bowyer Wins Thriller At Richmond

By Gerald Hodges/the Racing Reporter

RICHMOND, Vir.—Clint Bowyer's gamble on fuel, allowed him to win Saturday night's rain-delayed race at Richmond, as the Chase for the Sprint Cup is set.

Bowyer made it to the finish line 1.198 seconds ahead of Jeff Gordon, then ran out of fuel doing a victory lane burn out.

Bowyer recovered from a spin on lap 235 of the 400-lap race, after contact with Juan Montoya caused a left-rear tire on Bowyer's car to go down. Fighting for control, Bowyer looped his car near the start/finish line.

"Thank you, Juan Pablo, for wrecking me and then winning me the race -- thank you!" said Bowyer, who was then in position to gamble on fuel mileage. "We had a bad race last weekend [at Atlanta] and had a lot of adversity we had to bounce through, were kind of bummed out as a team, as a whole, coming into this race.

"It's a good way to get things bounced back headed into this Chase. You can't ask for a better race team. It's just unbelievable."

Bowyer's teammate Mark Martin ran third Saturday, followed by Tony Stewart and Matt Kenseth, but the big story was Gordon's miracle comeback that put all four Hendrick Motorsports cars in the Chase. Gordon joined Kahne, Jimmie Johnson and Dale Earnhardt Jr. in NASCAR's 10-race playoff.

For Kyle Busch, it was a failed pit strategy that led to his ouster from the second wild-card spot, a position he held entering the race and for the vast majority of Saturday night's event. When a light rain caused the sixth caution on Lap 275, Busch stayed out while others came to pit road for fuel. A slow pit stop under green on Lap 334, thanks to a dropped lug nut on the right-rear wheel, did further damage to Busch's chances.

Several times in the last 10 laps, the second provisional wild-card spot changed hands between Gordon and Busch, who entered the race with a 12-point lead over Gordon. When Busch passed Martin Truex Jr. for the 15th position on Lap 390 of 400, he had the berth. When Gordon passed Mark Martin on Lap 394, he took it back.

Ultimately, Busch dropped positions to Marcos Ambrose and Hendrick driver and pole-sitter Dale Earnhardt Jr., who was on a late-race mission to help his teammate make the Chase.

"We missed it, plain and simple," said Busch.

Gordon made the Chase by a three-point margin over Busch "I felt like I won the race tonight," Gordon said. "When that was over, when they told me I was in the Chase, we made it -- I mean, I was ecstatic. I was going nuts. To me, after you have that kind of effort, fall back, then come up there and finish second, almost win the race, make it by (three points), man, I don't see any reason why we can't go over these next 10 races and be a real threat for the championship."

Top-12 Chase contenders and reset points: 1. Hamlin-2012, 2. Johnson-2009, 3. Stewart-2009, 4. Keselowski-2009, 5. Biffle-2006, 6. Bowyer-2006, 7. Earnhardt-2003, 8. Kenseth-2002, 9. Harvick-2000, 10. Truex-2000, 11. Kahne-2000, 12. Gordon-2000

HARVICK IS RICHMOND NATIONWIDE WINNER

Kevin Harvick took the lead on a late restart in Friday night's Nationwide race at Richmond, and beat Ricky Stenhouse Jr. to the finish line by 1.944 seconds to win for the fifth time at the .75-mile short track and for the 38th time in the series, tying Carl Edwards for third on the all-time victory list.

"It's been a great year in this Nationwide car," said Harvick, who led a race-high 141 laps. "I know we haven't won the races that we needed to, but, man, we've led a ton of laps and been in contention to win just about every race I've been in this car this year.

"Sometimes you go through slumps like that, and when you break 'em, it just makes it that much sweeter."

Kurt Busch ran third, followed by Denny Hamlin, Michael Annett, Austin Dillon, Ty Dillon, Joe Nemechek, Ryan Blaney, and Darrell Wallace Jr.



The championship battle took a sudden turn on Lap 186, with Stenhouse and Elliott Sadler racing side-by-side through Turn 3 and 4. Sadler, on the inside during a sustained fight for the second position that already had lasted seven laps, broke loose beneath Stenhouse and backed his Chevrolet into the outside wall, crushing the rear deck.

Sadler lost a lap and restarted 28th on Lap 193. He rallied to finish 12th and retained the championship lead by one point over Stenhouse, the defending champion.

Top-10 leaders after 25 of 33: 1. Sadler-936, 2. Stenhouse-935, 3. A. Dillon-906, 4. Hornish-886, 5. Allgaier-841, 6. Annett-799, 7. Whitt-737, 8. Bliss-691, 9. Nemechek-605, 10. Scott-599

CHILDRESS CONSIDERING KURT BUSCH

Richard Childress told ESPN last week at Richmond that he has talked with Kurt Busch about driving a fourth Cup car in 2013.

"I have talked to Kurt about running a full season with a fourth team if we had sponsorship," Childress told ESPN. "He's a very, very talented driver. I like Kurt. Kurt and I would get along. There's just not a sponsor out there today that can fill a complete car."

Busch through a team public relations representative said he had nothing to add to Childress' comments.

Childress said he should know his entire driver lineup by mid-October. He plans to field three Sprint Cup teams with drivers Kevin Harvick, Paul Menard and Jeff Burton, as well as three Nationwide teams. Childress' grandson Austin Dillon will drive one of the full-time Nationwide cars with grandson Ty Dillon driving 8-10 Nationwide races while running a full-time Truck Series schedule.

"He and I would get along, and he would listen to me," Childress said of Busch. "One thing he needs is somebody, when he does do wrong, to discuss how to handle it."

Busch has spent this season driving for under funded and primarily un-sponsored No. 51 Phoenix Racing. Phoenix Racing general manager Steve Barkdoll told ESPN.com recently that owner James Finch would welcome Busch back in 2013 if sponsorship was found.

Weekend Racing: The Cup and Nationwide teams are at the 1.5-mile Chicagoland Speedway in Joliet, Illinois, while the trucks will be at the seven-eighths mile Newton, Iowa track.

Sat., Sept. 15, Nationwide Dollar General 300, race 26 of 33; Starting time: 3 pm ET; TV: ESPN2.

Sat., Sept. 15, Camping World Trucks Iowa 200, race 15 of 22; Starting time: 8 pm ET; TV: SPEED.

Sun., Sept. 16, Sprint Cup Geico 400, race 27 of 36; Starting time: 1 pm ET; TV: ESPN.

Racing Trivia Question: Where is the last Cup race of the season held?

Last Week's Question: Who won the first Cup race held at Chicagoland Speedway? Answer: Kevin Harvick.

You may contact the Racing Reporter at hodges@race500.com.

"SUM SACC" Moves to Lewisburg Children's Center

SUM SACC, the school-age child care program operated by Snyder Union Mifflin Child Development (SUMCD), Inc. is now located at the Lewisburg Children's Center, having moved from its former home at Kelly and Linntown schools.

SUM SACC will continue to provide the same high-quality before and after school services it has offered in Lewisburg for more than 20 years. Soon to attain a Pennsylvania STARS 4 rating—the highest rating for quality care in Pennsylvania—the program provides recreational and educational play, child interest-initiated activities, academic enrichment and homework support, and participation in community service projects.

"Lewisburg Children's Center has been busy transforming early childhood areas into spaces designed specifically for school-age children," said Jane Campbell, SUMCD's executive director. Outside are trails for nature study, playgrounds, and spaces for sports activities such as soccer and basketball. Inside are child-friendly spaces for quiet study and homework, as well as peer and teacher support for those activities. A preschool room will be the new SACC home for kindergarteners and first graders.

SUM SACC is staffed by experienced and qualified teachers with a degree in early childhood education, a related degree in education, or school-age child care credentials. The SUM SACC curriculum is aligned with the National After School Association Standards, Pennsylvania Academic Standards, and 40 developmental assets.

SUM SACC's hours of operation are from 6:00 am to 6:00 pm, with care before and after school hours. SUM SACC will transport the children to and from school. Enrolled parents may sign up for full-day care on weather-related "School's Out" days, school holidays, and school-break-related days. Care is provided for 2-hour school delays, both scheduled and weather-related.

For more information or to enroll, contact Enrollment Manager Deb Field at 570-524-0926. Families who have already enrolled for the fall do not need to call. Those who have not enrolled, please do so as soon as possible to guarantee your child's spot. Tuition assistance is available to families who qualify.

SUM SACC staff look forward to welcoming you and your child to another year of exciting, individualized school-age child care services!

SUMCD is a private, non-profit organization that provides child care services to children and families at 19 sites in Snyder, Union, Mifflin, and Northumberland counties. SUMCD is a United Way agency.



THURSDAY, SEPTEMBER 20 @ 3:00 PM

Ebenezer Reformed Church located along Route 235 in Laurelton, Union Co., Pa., **HISTORICAL UNION COUNTY CHURCH (selling at 6:00 pm)**



Mt. Stone & Framed Wall Church consisting of a Beautiful Sanctuary w/ Finished Wooden Floors & Stained Glass Windows. Enclosed Foyer. Sunday School Rooms in Basement. Kitchen Area. Bath. Oil Hot Air Furnace. Handicap Lift. No Well. Public Septic. Built in 1876 and in Good State of Repair. For Inspection Call: (570) 922-1821 or (570) 922-1346. **Purchase this historical property with so much potential.** Terms: 10% down, balance in 45 days or sooner. Prospective buyer may conduct various testings at their expense prior to sale day.

H.H. GOODS, ANTIQUES & COLLECTIBLES: 12 Youth Sunday School Chairs & Table; 3 Walnut Ormate Red Plush Uph. Ministerial Chairs; 14 Dining Rm. Chairs; 40 Wooden Folding Chairs; Lg. & Sm. Walnut Pulpits & Altar; Baldwin Elect. Organ (needs work); Pump Organ (made elect.) Upright Piano; Oak Library Table; Oak Book Case; 7 Stained Glass Encased Window; Oak Stand; Oak Zinc Inlaid Rect. Ice Box; 8' Folding Tables; Art Deco Water Coolers; 30' Gas G.E. Stove; Coat Rack; Original Hanging Oil Light; Steigmeiers Brewing Co. & Sheffer's Ice Cream Metal Trays; Wooden Coin Offering Barrels; Offering & Communion Serving Plate w/Glasses; Edmund Shively & Neil Pursley Hand Fans; Rosedale Dairy & Sunnydale Farms Milk Cans; Crocks; Blue Granite Dishpan; Granite Roasters, Dishpans & etc.; Green Dep. Salt & Peppers; Pink Dep. Glasses; Pressed Glass; Hall Bowl; Meat Platters; Misc. Dishes; Glasses; Holy Land Maps; Tiny Tots Pails; Cast Iron Fry Pan; Finger Lamp; Flags & Stands; Crosses; Flower Vases; Banners; Candle Holders; Church Hymnals & Bibles; 48 cup Coffee Pot;

OWNER: EBENEZER REFORMED CHURCH

ATTORNEY: Thomas Boop, (570)286-6701

AUCTIONEERS:
WAYNE M. HESS AU-000411-L (570) 922-1206
LORI HESS LAUVER AU-002854-L (570) 966-2512

www.auctionzip.com
Owner & Auctioneers Not Responsible for Accidents. Food Stand. All Verbal Information Day of Auction Takes Precedence Over Written Advertisement.

COMPLETE AUCTIONEERING SERVICE

REAL ESTATE AUCTION
Friday, October 12, 2012 at 5:00pm
4893 Crossroads Drive, Lewisburg PA.
Kelley Township, Union County



Parcel 1: Located on 2.89 acres is a 2 Story, 4 Bedroom, 2 Bath Home. The Home has a New Cherry Kitchen, Spacious Dining Room, Living Room, & Den. A Large Rear Deck and Open Front Porch add to this Country Setting. The Home is Completely Renovated with New Windows, Siding, Roof, Plumbing, New Septic System, and Interior having New Trim, Doors, & Floor Coverings. A Move-In Condition Home.

Parcel 2: Located adjacent to Parcel 1, this 5.26 Acre Parcel of Land has Hilltop Views, New Survey, & is Perc'd for an at-grade system.

Parcel's 1 & 2 are located in Lewisburg School District, and will be offered individually or in their entirety. Buy 1 or both parcels.

Terms: 10% Down Balance in 30 days. No Buyers Premium. For showing contact auctioneers.

Attorney: Sara Hudock, 570-966-3006

KENNETH E. HASSINGER
330 Hassinger Way
McClure, PA 17841
(570) 658-3536 : AU-001532-L



NEIL A. COURTNEY
3442 Heister Valley Road
Richfield, PA 17086
(570) 539-8791 : AU-002651-L

www.hassingercourtney.com

COMPLETE AUCTIONEERING SERVICE

ABSOLUTE AUCTION
Monday, October 8, 2012 @ 1:00 p.m.
A.J.'s Lounge, 323 Rear Market St, Sunbury PA

Real Estate, Liquor License, & Equipment
will be sold to the Highest Bidder Regardless of Price

Located at 323 Rear Market Street, Sunbury PA, this 2985+-Sq. Ft. Building is currently a Fully Equipped Restaurant/Lounge with 120+- Person Capacity. The Real Estate has been recently remodeled with New Central Air, Heat Pump, Hot Water Heaters, & Ceramic and Laminate Flooring. The Building currently has updated Kitchen, 2 Restrooms, Small Office, Employee Restroom, 6' x 6' Walk-In Cooler, & 6' x 6' Walk-In Freezer. The property affords many possibilities & is in a good state of repair.

TERMS: Real Estate, Liquor License, or Equipment in its Entirety. To be offered individually or any combination thereof. (See www.hassingercourtney.com for Equipment List). Don't Miss This Opportunity. Real Estate 10% Down, Balance in 45 Days. Liquor License 10% Down, Balance at Transfer. Equipment to be paid in full day of auction. No Buyer's Premium. Attorney: Thomas Boop, 570-286-6701. Broker Participation offered at 2% to any Realtor who registers the successful real estate buyer per the terms of the Hassinger & Courtney Broker Participation Agreement.

KENNETH E. HASSINGER
330 Hassinger Way
McClure, PA 17841
(570) 658-3536 : AU-001532-L



NEIL A. COURTNEY
3442 Heister Valley Road
Richfield, PA 17086
(570) 539-8791 : AU-002651-L

www.hassingercourtney.com

COMPLETE AUCTIONEERING SERVICE

ABSOLUTE REAL ESTATE AUCTION
Friday, September 28, 2012 at 5:00 p.m.
PROPERTY SOLD TO THE HIGHEST BIDDER REGARDLESS OF PRICE !!!
Fayette Township, Juniata County, PA. Just North of McAlisterville, off Mt. Road

DIRECTIONS: From McAlisterville take Rt. 235 North for 1.5 miles. Turn left on Mt. Road and proceed 2/10 mile. Turn right on Jenny Lane and proceed to end of lane. Auction straight ahead.

122.5+- ACRES OF WOODLAND

Parcel 1: 41.498 Acres of Mature Woodland. Approximately 215,000 Board Feet of Standing Timber at 14" & up on this parcel. Parcel 2: 81.032 Acres of Mature Woodland. Approximately 322,000 Board Feet of Standing Timber at 14" & up on this parcel.

Offered in 2 Parcels with Recent Survey. Both Parcels have easy access off level road and afford Private Settings for Residence, Camp, or Cottage. The Parcels have Trails throughout for 4 Wheeling, Horseback Riding, Hiking, or Hunting. Wildlife abounds. A Great Get-Away spot with Endless Recreational Opportunities as well as Substantial Timber Values. Just minutes from Rt. 322 to Harrisburg. Short distance to 1000's of Acres of State Forest Land.

Terms: No Buyer's Premium. Property sold to the highest bidder regardless of price. 10% down balance in 45 days. For more information contact auctioneers. Broker Participation Invited at 3%. Attorney: Tom Clark 570-837-0091.

KENNETH E. HASSINGER
330 Hassinger Way
McClure, PA 17841
(570) 658-3536 : AU-001532-L



NEIL A. COURTNEY
3442 Heister Valley Road
Richfield, PA 17086
(570) 539-8791 : AU-002651-L

www.hassingercourtney.com

Superior Fencing Martins Vinyl Products Superior Railing



FALL PRIVACY FENCE SPECIAL!!!
10% off when you buy in Sept. & Oct.

Visit our showroom at 5141 Produce Rd., Port Trevorton.

Directions: 11-15 to Port Trevorton, take Peffer Valley Rd to Produce Rd., Follow signs.

We Specialize in Fencing ~ Railing ~ Decking. Installation is Available! Free Estimates!

PA STATE INSPECTION

Sept, Oct, Nov
Can be done!

\$20 + tax
CLEAN, WASH, WAX

\$60 + tax
Call for appointment

Watson Motors
Mifflinburg, 966-1019

"My granddaughter Amanda was life-flighted to Pittsburgh nine weeks ago and we're wondering if you can do anything to help pay expenses," said Verdilla Heddings of West Milton who called Pennsylvania Cystic Fibrosis, Inc. (PACFI) for assistance. She explained that Amanda has Cystic Fibrosis-Related Diabetes and is battling a lung infection combined with rejection of her lungs that were transplanted in 2005.

Heddings noted further that Amanda's mother, Bonnie Lyons, was staying at the University of Pittsburgh Medical Center (UPMC) with her daughter while Amanda's father remains at home. The father, Ron, had triple bypass surgery and is on disability. He tries to visit once weekly.

"Our board of directors was contacted by email and agreed to donate \$300 to help pay for parking expenses, food for Amanda's mother, and gas money for the father to visit," said Bob Derr, public relations director and secretary for PACFI. "We also agreed to form a fundraiser called Helping Amanda where people could donate funds to help with hospital expenses and other monthly bills.

The Lyons family lives in Carlisle and Bonnie Lyons has been on leave without pay for the past ten weeks because she wants to remain at UPMC with her daughter who is in the Intensive Care Unit.

People who want to donate can make a check out to PACFI and send it to PACFI, Helping Amanda, P.O. Box 29, Mifflinburg, PA 17844. All funds received will be given to the family to help pay expenses.

Gutellius House Present Photographic Exhibition

The Gutellius House (5th and Green Streets, Mifflinburg) is presenting a photographic exhibition: "Iconic Images: A Retrospective of The Pennsylvania Barn." Please join us for the opening reception and artist's talk beginning at 1 pm on September 16. The exhibit will remain open to the public at the Gutellius House on Sundays from 1 to 4 pm through October 28. For further information, call (570) 966-4150.

The exhibition highlights the photography of art historian/museum art educator and documentary photographer Colette Frantz. Ms. Frantz believes the barn is a significant part of the Pennsylvania landscape and is an important historical landmark that is rapidly disappearing across America. Many of Pennsylvania's barns as well as barns all across North America are disappearing because of neglect and demolition. The photographs presented in this exhibition are a part of the visual record of the barn architecture that still stands in Pennsylvania. Barn architecture provides shelter, a canvas for advertisements, and evidence of the cultural heritage of American settlers which is often overlooked by art historians and the general public for its importance in American history and historic preservation.

Graduates

Central Susquehanna LPN Career Center
 Erin Hess, Mifflinburg
 Tria Jones, Lewisburg
 Elizabeth Adams, Lewisburg
 Sherry Rowe, Lewisburg
 Liliya Borisov, Lewisburg
 Jennifer Schwartz, Lewisburg
 Christopher Davis, Lewisburg
 Mary Spotts, Mifflinburg

FOR SALE

3 Bedroom Ranch House with finished basement and attached 2 car garage, spacious back yard, house has lots of extras!

(570) 966-7028

HELP WANTED

We are looking for a full time enthusiastic eager salesperson for Union & Snyder County. Someone who is good with people. Some experience necessary. Organization skills is a must. Sales commission and mileage.

If you are this person, mail your resume to:
 Sue Weaver, Publisher, Snyder/Union County Times
 P.O. Box 356, Middleburg, PA 17842,
 Fax: (570) 837-0776 • Email: scuc@ptd.net

FRIDAY, SEPTEMBER 21 @ 1:00 PM
SATURDAY, SEPTEMBER 22 @ 8:00 AM

From Route 15 take the West Milton Exit. Turn Right at Red Light onto Rt. 642E. Cross River Bridge into Milton onto Mahoning St., Turn Left onto Turbot Ave. (at Cemetery). Turn Right onto Hepburn St. to 802 Hepburn St., Milton, Northumberland, Co. PA

TOOLS, H/H GOODS, MISC. (selling Friday): MTD 8/26 Snowblower; Craftsman Dbl. Cylinder Air Compressor; 16' Alum. Extension Ladder; 6' Alum. Step Ladder; 22" Craftsman 6/5 Self Prop. Mower w/Bagger; Lawn Spreader; Wheelbarrow; Lawn, Garden & Shop Tools; Tubular Glider; Card Tables; 4 Metal Folding Chairs; Garden, Chairs; Bedding; Lg. Amt. Ceramics; Cookware; Corning; Visionware; Tupperware; Misc. Kitchen Items; Avon; Records; Pressed Glassware & Many Items To Numerous Too Mention.

HOUSEHOLD GOODS (selling Saturday): 18 cu. Frigidaire Refrigerator; Frigidaire Washer & Dryer; Frigidaire Upright Deep Freeze; Sharp Microwave; Zenith Console Color TV; Necchi Console Elect. Sewing Machine; Eureka Sweeper; 5 pc. Maple Dinette Set; Maple Glass Front Corner Cupboard; Maple Dinette Table; Kneehole Desk; Sm. Maple Cabinet; 2 Blanket Chests; Cedar Chest; Roll Top Desk; Base Dry Sink; Uph. Chairs & 3 Beige Recliners; Plaid Sofa Bed; Lg. 2 pc. Beige Stripped Sofa & Chair; Captain Chair; Chifferobe; 3 pc. Cherry Bedroom Suite; Cannonball Twin Beds; Lg. Glass Front Oak China Closet; Walnut Pedestal Table & Stand; Fans; Server; Stack Stands; 2 Dropleaf Lamp Tables; Grandfathers Clock; Twin Wash Tubs; Linens; Table Lamps; Cookware; 10 Sm. Boyds Bears; Misc. Cabinet & More.

ANTIQUES (selling Saturday):
 Dovetailed Cherry Dropleaf Table; Sm. Oak Kneehole Desk; Oak Washstand; Poplar Night Stand; Oak Dbl. Door Fruit Cupboard; 1950's Red/Cream 7 pc. Chrome Breakfast Set; Early Rocking Chairs; Bamboo Bookcase; 2 Sm. Chimney Cupboards; Art Deco Table; Bench; Glass Front Show Case; 2 Maple Dropleaf Light Stands; Miniature Hanging Side by Side; Walnut Night Stand; Rayo & Kerosene Lights; Milk Can; 9x12 Braided Rug; Red Portable Cooler; Pictures & Frames; Coffee Grinders; Jardineers; Butter Bowl & Paddle; Butter Churn; Rolling Pin; Hair Receivers; 12 Chicken on the Nests; Glass Baskets; **100 HUMMEL STATUES & (1972-1981) PLATES:** Shirley Temple; Donny Osman & other Dolls; Tulip & Fan Quilts; **FOSTORIA:** Dinner, Dessert Plates, Sherbets; Vases; Toothpick Holder; S/P, Sugar & Creamer, Pitcher, Juice & Tumblers; Poppy Bowls; Carnival Glass; Pressed Glassware; Opalescent Glass; Gold Beveled Framed Mirror; Yellowware Bowl; Pyrex Bowl and Much More.

OWNER: BERTHA SCHELL
P.O.A. EVELYN ERB

ATTORNEY: Christopher Foust (570) 742-8746

AUCTIONEERS:
WAYNE M. HESS AU-000411-L (570) 922-1206
LORI HESS LAUVER AU-002854-L (570) 966-2512
www.auctionzip.com

Owner & Auctioneers Not Responsible for Accidents. Food Stand. All Verbal Information Day of Auction Takes Precedence Over Written Advertisement.

Sport's Scores

HIGH SCHOOL GIRLS TENNIS
 Williamsport 4, Selingsgrove 1
 Williamsport 4, Lewisburg 0
 Danville 4, Selingsgrove 1
 Milton 5, Lewisburg 1
 Selingsgrove 4, Lewisburg 1

FOOTBALL
 Shikellamy 26, Mifflinburg 20
 Mount Carmel 27, Lewisburg 13
 Selingsgrove 23, Trinity 21

BOYS SOCCER
 Lewisburg 10, Shikellamy 0
 Selingsgrove 6, Williamsport 0
 Danville 5, Mifflinburg 0
 Midd-West 4, Milton 1
 Danville 1, Lewisburg 1 (OT)
 Mifflinburg 1, Williamsport 0
 Selingsgrove 6, Milton 0
 Midd-West 8, Shikellamy 0

GIRLS SOCCER
 Warrior Run 1, Mifflinburg 0 (Suspended)
 Selingsgrove 2, Danville 1 (OT)
 Warrior Run 5, Mifflinburg 1
 Midd-West 3, Williamsport 1
 Midd-West 2, Milton 1
 Selingsgrove 4, Williamsport 1
 Lewisburg 6, Shikellamy 1
 Mifflinburg 5, Jersey Shore 1

FIELD HOCKEY
 Lewisburg 9, Milton 0
 Mifflinburg 3, Midd-West 0
 Selingsgrove 1, Shikellamy 1
 Midd-West 3, Central Columbia 2
 Greenwood 2, Selingsgrove 0
 Mifflinburg 7, Milton 0
 Selingsgrove 5, Midd-West 0

BOYS CROSS COUNTRY
 Lewisburg 20, Shikellamy 39
 Lewisburg 22, Jersey Shore 39
 Lewisburg 17, Warrior Run 44
 Lewisburg 15, Hughesville 50
 Mifflinburg 3, Shikellamy 0
 Lewisburg 15, Montoursville 49
 Mifflinburg 15, Montoursville 44
 Lewisburg 17, Milton 45
 Mifflinburg 18, Milton 36
 Lewisburg 21, Mifflinburg 34
 Lewisburg 15, Hughesville 50

GIRLS CROSS COUNTRY
 Lewisburg 23, Shikellamy 38
 Lewisburg 15, Jersey Shore 50
 Lewisburg 15, Warrior Run 50
 Lewisburg 15, Hughesville 50
 Lewisburg 15, Montoursville 50
 Montoursville 27, Mifflinburg 28
 Lewisburg 15, Milton 50
 Mifflinburg 15, Milton 50
 Lewisburg 19, Mifflinburg 44
 Lewisburg 15, Hughesville 50

COLLEGE WOMEN'S SOCCER
 Misericordia 2, Susquehanna 0
 Bucknell 3, UMBC 0
 Susquehanna 2, Lycoming 1
 Bucknell 2, Mount St. Mary's 0

MEN'S SOCCER
 Susquehanna 4, Lycoming 0
 Bucknell 2, La Salle 1

FIELD HOCKEY
 Bucknell 2, Cornell 1
 St. John Fisher 1, Susquehanna 0
 Columbia 2, Bucknell 0

WOMEN'S VOLLEYBALL
 Cornell 3, Bucknell 2
 Williams 3, Susquehanna 1
 Middlebury 3, Susquehanna 0

FOOTBALL
 John Hopkins 34, Susquehanna 7
 Bucknell 19, Marist 17

MEN'S WATER POLO
 Line Mountain 6, Lewisburg 0
 Midd-West 1, Warrior Run 0

RACING SELINGSGROVE RACEWAY PARK:
September 7, 2012

270 Micro Sprint Cars 25-Lap A-Main: 1. 8C Cody Hauck; 2. 7S Tyler Snook; 3. 83 Nick Aucker; 4. 76 Nathan Ritter; 5. 83 Nunzi Allegrucci; 6. 17B Troy Whitesel; 7. 48 Cameron Englehart; 8. 4U David Utt; 9. 32 Matt Bower; 10. 86 Rusty Crone. **125 Micro Sprint Cars 15-Lap A-Main:** 1. 09 Stone Phillips; 2. 88 Jessica Miller.

Go Kart Summary
Lites A-Main: 1. Cody Fedders; 2. Dylan Feltman; 3. Andrew Yoder. **Rookie Cage (5-8) A-Main:** 1. Hunter McKinney; 2. Levi Vial; 3. Gannon Steimling. **Rookie Cage (9-12) A-Main:** 1. Grace Long; 2. Max Charles; 3. Chad Moyer. **Flat 350s A-Main:** 1. Kyle Stahl; 2. Bob Ferry; 3. Josh Kerstetter. **Kid Karts A-Main:** 1. Timmy Bittner; 2. Ashton Gonder; 3. Chase Paige. **Mediums A-Main:** 1. Andrew Yoder; 2. Ashley Mull; 3. Tyler Brown. **Adult Cage Animal A-Main:** 1. Dalton Benner; 2. Calvin Carr; 3. Tyson Mowery. **Jr. Cage A-Main:** 1. Drew Trego; 2. Chase Morris; 3. Shane Yost. **Heavies A-Main:** 1. Matt Hummel; 2. Jared Fulkrad; 3. Nate Herman. **Rookies II A-Main:** 1. Trevor Teats; 2. Ben Stolz; 3. Max Charles. **Senior Clones A-Main:** 1. Brandon Murtoff; 2. Cory Solomon; 3. Mikayla Freed. **Jr. Restricted A-Main:** 1. Neil Kitcher; 2. Breanna Dysinger. **Extra Heavies A-Main:** 1. Chuck Paige; 2. Rex Gill; 3. Josh Wagner.

SELINGSGROVE SPEEDWAY: September 8, 2012
358 Sprint Cars 25-Lap A-Main: 1. 3 Pat Cannon; 2. 2 Jason Shultz; 3. 23 TJ Stutts; 4. 66 Ryan Kissinger; 5. 21 Duane Mausteller; 6. 1 Mark Smith; 7. 77 Derek Locke; 8. 29 Matt Horst; 9. 71 Charlie Anderson DNF; 10. 3Z John Smith DNF.

Late Models 25-Lap A-Main: 1. 2J Jeff Rine; 2. 06 Mike Lupfer; 3. 119B Bryan Bernheisel; 4. 44 Donnie Schick; 5. 55 Chris Shuey; 6. 91 Chad Davis; 7. 16 Matt Cochran; 8. 7M Meade Hahn; 9. 119 Jim Bernheisel DNF; 10. 22 Brett Schadel DNF. **Pro Stocks 15-Lap A-Main:** 1. 28 Jason Smith; 2. 19 AJ Hoffman; 3. 115 Shaun Miller; 4. 85L Pete Lauver; 5. 63 Nathan

Long; 6. 4 Jim Payne; 7. 66 Dustin Wolfgang; 8. 28J Jeff Ceballo; 9. 6 Tommy Jensen; 10. 3G Jim Gerhart. **Roadrunners 12-Lap A-Main:** 1. 02 John Fowler Jr.; 2. 2 Adam Campbell; 3. 11 Keith Bissinger; 4. 89 John Schoch; 5. Curtis Lawton; 6. 6 Dan Jensen Jr.; 7. 201 Brian Johnson; 8. 8K Jeremy Kline; 9. 111X Larry Alvord; 10. 111 Matt Lawrence.

WILLIAMS GROVE SPEEDWAY: September 7, 2012
Brooks Graphix's 358 Late Models: 1. 1x JT Spence; 2. NINE Randy Stoudt; 3. 81s Bobby Beard; 4. 64 Grant Adams; 5. 1 Gene Knaub; 6. 11 Tyler Armstrong; 7. 116 Travis Mease; 8. 2 Carl Billel; 9. 12 Charlie Shaffer; 10. 17G Mike Goodwin. **Blazer's Body Shop Super Sportsman:** 1. 77 Russ Mitten; 2. 75 Kenny Edkin; 3. 11 Steve Fannasy; 4. 18 Paul Miller; 5. 43 Doug Dodson; 6. 00 Rick Barr; 7. 33 Scott Geesey; 8. 93 Carmen Perigo Jr.; 9. 30 Scott Dellinger; 10. 99 Frankie Herr. **Tool Shed of America 358 Sprints:** 1. 29 Ryan Wilson; 2. 4R TJ Stutts; 3. 3 Pat Cannon; 4. 1w Eric Tomechek; 5. M1 Mark Smith; 6. 50 Tim Berkheimer; 7. 27s

Adrian Shaffer; 8. 8 Rich Eichelberger; 9. 5 Tyler Ross; 10. 21 Scott Fisher. **PORT ROYAL SPEEDWAY: September 7, 2012 Feature Finishes:**
 410 sprints, 25 laps: 1. Dale Blaney, 2. Stevie Smith, 3. Lance Dewease, 4. Danny Dietrich, 5. Fred Rahmer, 6. David Gravel, 7. Tim Shaffer, 8. Danny Holtgraver, 9. Chad Layton, 10. Paul McMahan. **Late Models, 33 laps:** 1. Brett Schadel, 2. Coleby Frye, 3. Chad Hollenbeck, 4. Mike Lupfer, 5. Jeff Rine, 6. Dylan Yoder, 7. Mitch Hack, 8. Tim Wilson, 9. Scott Haus, 10. Jeff Miller.

September 8, 2012 Feature Finishes:
 410 sprints, 50 laps, Tuscarora 50, All Stars: 1. Doug Est (\$11,450) 2. David Gravel, 3. Dale Blaney, 4. Mike Wagner, 5. Danny Lasoski, 6. Daryn Pittman, 7. Cap Henry, 8. Blane Heimbach, 9. Ryan Smith, 10. Chad Layton. **Pro Stocks, 20 laps:** 1. Derrick Garman, 2. John Heane, 3. AJ Stroup, 4. Nate Kerstetter, 5. Harold Ranck Jr., 6. Jason Schmidt, 7. Matt Hornberger, 8. Nate Fisher, 9. Lucas Bryner, 10. Nate Stroup.

Local Program Arms Families with Tools to Protect Senior Loved Ones from Scams

Local senior care experts are urging Central Susquehanna River Valley families to be alert for scammers who may be targeting their senior loved ones with a variety of clever cons that could jeopardize not only their life savings but their independence.

"Scam artists are specifically targeting seniors because they are the fastest-growing segment of the population, which has led to increased demands on law enforcement agencies," said Joe DeLauter, owner of the Home Instead Senior Care® office serving the Central Susquehanna River Valley. "This scenario has the potential to put more local seniors than ever at risk of losing their life savings, their homes and their trust in others."

As a result, the nonprofit National Association of Triads and the local Home Instead Senior Care office have launched a public information program to educate families and seniors about how to protect themselves.

The Protect Seniors from FraudSM program – developed with the expert assistance of the Triads – provides family caregivers with a number of important tools at ProtectSeniorsFromFraud.com. Included in the website's various resources is a Criminal Target Scale, which can help family caregivers assess how likely their senior is to be the potential target of a scam. A Senior Fraud Protection Kit also is available from the local franchise office.

According to experts, the top three crimes targeting seniors are identity theft, Medicaid/Medicare and medication fraud, and financial exploitation. The demographics of an aging population and the sophistication of scammers are adding up to big losses – both financially and emotionally – for older adults. The annual financial loss by victims of elder financial abuse is estimated to be at least \$2.9 billion, a 12 percent increase since 2008*.

"Our CAREgiversSM are always on the lookout for potential scams that target senior clients, helping them screen phone calls and deal with questionable pieces of mail. We're pleased to provide the tools to help family caregivers as well as seniors ward off increasingly cunning con artists and their elaborate schemes to defraud local adults," DeLauter said.

What makes con artists difficult to capture is the lack of reporting of this crime, experts note. "A recent AARP study found that only 25 percent of victims over age 55 have reported to authorities that they've fallen for a scam," said Ed Hutchison, director of the National Association of Triads, Inc.

"These seniors may be afraid to be seen as vulnerable by the law and those in a position to tell them that, perhaps, they are not fit to continue living by themselves. It's a perceived threat of a loss of independence that drives many to keep quiet," said Hutchison, whose 820 state Triads – part of the National Sheriffs' Association – work with local seniors, law enforcement and community volunteers to help keep seniors safe.

For more information or to obtain a free Senior Fraud Protection Kit, contact the Home Instead Senior Care office serving the Central Susquehanna River Valley at 866-522-6533.

COMPLETE AUCTIONEERING SERVICE

ABSOLUTE REAL ESTATE AUCTION

Wednesday, September 26, 2012, 1:00 pm
 Selling Real Estate, Antiques, Collectibles, Guns, Household Goods, Tools, & More. At the Former Home of Charles & Frances Dreese. 5900 State Route 304, Limestone Twp., Union County, New Berlin PA

DIRECTIONS: From New Berlin, take Rt 304 East approx. 2 miles, auction on left sign posted.

Located along Rt 304, just south of New Berlin, this 3 Bedroom, 1.5 Bath Home overlooks the Penns Creek. The Home has a Large Living Room with Fireplace and Insert, Spacious Dining Room, & Open Kitchen with Oak Cabinets. Extras include: Sun Room, Large Game Room in Basement with Woodstove Hookup, Central Vac, 2 Car Garage, & a 24' x 32' Pole Building for Shop or Storage. The home is situated on the North Side of Rt. 304 on a 1+- Acre Lot. The Home overlooks the Penns Creek and the Property has 200+- ft of Frontage on the Penns Creek. A Great Recreational Spot. The seller has moved to assisted living and says "sell". Don't Miss this opportunity. Contact auctioneers for showing.

Attorney: Pete Matson, 570-523-3285

TERMS: No Buyer's Premium, 10% Down, Balance in 45 Days.

KENNETH E. HASSINGER 330 Hassinger Way McClure, PA 17841 (570) 658-3536 • AU-001532-L	 NEIL A. COURTNEY 3442 Heister Valley Road Richfield, PA 17086 (570) 539-8791 • AU-002651-L
---	--

www.hassinercourtney.com

COMPLETE AUCTIONEERING SERVICE

ABSOLUTE REAL ESTATE AUCTION

Saturday, October 13, 2012 at 9:00 a.m.
 For the Estate of Gary Hackenberg, 2200 Kissimmee Road, Middleburg, PA

HOME ON 4.17 ACRES
 Located on the Acreage is a Well Maintained, Like-New 2 Bedroom Ranch Home having New Oak Kitchen, Full Bath, Large Living Room, Dining Room, Breeze-Way with Laundry & Woodstove Hookup, Attached 1 Car Garage, & Both Front and Rear Porches. Extras include a 24' x 36' Garage with Overhead Door, 10' x 10' Utility Shed, & Small Pond for Recreation.

TERMS: 10% Down, Balance in 45 Days. No Buyer's Premium. Attorney: Charles Ax, 570-837-0086.

KENNETH E. HASSINGER 330 Hassinger Way McClure, PA 17841 (570) 658-3536 • AU-001532-L	 NEIL A. COURTNEY 3442 Heister Valley Road Richfield, PA 17086 (570) 539-8791 • AU-002651-L
---	--

www.hassinercourtney.com

COMPLETE AUCTIONEERING SERVICE

ABSOLUTE REAL ESTATE AUCTION

Saturday, October 6, 2012 at 1:00pm
SOLD TO THE HIGHEST BIDDER REGARDLESS OF PRICE !!!
 For the Estate of Jessie B. Sutton. 1340 Benfer Drive, Winfield, PA, Jackson Twp., Snyder County

157+- ACRE FARM
 The Acreage is approximately 111+- Cropland, 43+- Woodland & Wildliffe, & 3 +- Acres for the current Building Site, according to the Snyder County Soil Conservation District Plan. The Acreage is in a High State of Cultivation in Corn & Beans. With 1,000+ ft. of Creek Frontage on the Penns Creek and Class 1 & 2 Soil Types, this Property affords great opportunity for many types of farm operations. Located on the Property is a 2 Story Duplex Home with each unit having 2 Bedrooms, Bath, Living Room, and New Oak Kitchens as well as each having an Extra Room for Storage or Bedroom. This residence could easily be converted back to a single family, 2 story home. Also located on the property is a Large Bank Barn for Horses or Cattle. The Farm has 30/35+- Acres of Timber that has not been harvested in the last 50 years. This is a Beautiful Stand of Timber for Recreation or Additional Income. The property is located just East of New Berlin along Rt. 204 with easy access to the Buildings and Farmland from Rt. 204 or Benfer Drive. This is truly a rare opportunity to purchase this Fine Parcel of Real Estate.

TERMS: Property sold without Reserve to the Highest Bidder, Regardless of Price. NO BUYERS PREMIUM. 10% Down balance in 45 days. Broker participation invited at 3% to any Realtor who registers a successful buyer per terms of Hassinger/Courtney broker participation agreement. Attorney: Charles J. Ax, Middleburg, Pa. • 570-837-0086. For Property Tour or Informational Packet Contact auctioneers.

KENNETH E. HASSINGER 330 Hassinger Way McClure, PA 17841 (570) 658-3536 • AU-001532-L	 NEIL A. COURTNEY 3442 Heister Valley Road Richfield, PA 17086 (570) 539-8791 • AU-002651-L
---	--

www.hassinercourtney.com

On-Site Interventional Cardiologist Joins Cardiovascular Program

Evangelical Community Hospital is pleased to welcome Petra Lynch, MD, a Geisinger Interventional Cardiologist to its staff. Dr. Lynch will perform cardiovascular procedures at Evangelical Community Hospital while also providing care in an outpatient setting at Geisinger Cardiology-Lewisburg, 131 JPM Road, Lewisburg. Dr. Lynch specializes in minimally invasive cardiovascular procedures, including heart and peripheral vascular catheterizations, balloon angioplasty and stent placement.



Dr. Lynch received her medical degree from the Albert-Ludwig-University Freiburg School of Medicine, Freiburg, Germany, in 2002. She completed a residency in internal medicine and pediatrics in 2007 and a fellowship in cardiology in 2011 both at SUNY, Buffalo, NY. She also completed a fellowship in interventional cardiology in 2012 at the University of Rochester Medical Center.

"Evangelical Community Hospital answers the need for Cardiology services in Union, Snyder, Northumberland counties and their surrounding areas. The addition of Dr. Lynch to our cardiac care team brings new depth to our already strong program which utilizes the latest equipment and technology for interventional cardiovascular care, including emergency cases," said James Craven, Associate VP of Cardiovascular Services.

Lynch joins an exceptional staff of technologists and nurses who bring a combined 40 years of catheterization lab experience to every procedure performed.

For more information on Dr. Lynch and her services at Evangelical Community Hospital and outpatient treatment at Geisinger Cardiology - Lewisburg, call 570-524-4211. Since August 2010, more than 500 cardiac catheterization procedures have been performed at Evangelical.

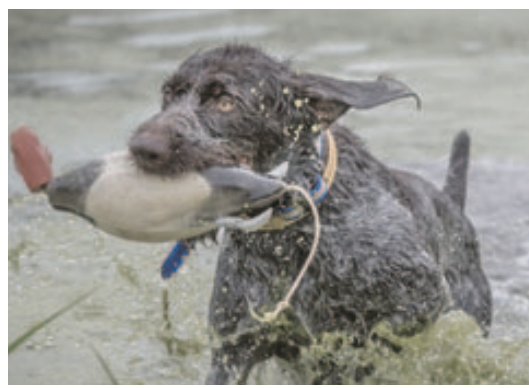
Buggy Museum Announces Capital Campaign



The Mifflinburg Buggy Museum announces a capital campaign, Forging Ahead II to raise funds for the restoration and preservation of collections, increasing the endowment and retirement of the mortgage on the Snyder Education and Visitor Center. Volunteer members of the Board of Directors, pictured here from left in the rear, Peter Gardner, Ron Marquette, Gary Coddington, Gordon Klingman, Len Manbeck and Sue Idings have already donated over \$30,000 towards the goal of \$300,000. The Mifflinburg Buggy Museum preserves the only intact 19th century carriage factory open to the public in the United States. The complex includes the modern Visitor Center built in 2000, as well as the original Heiss family home, carriage factory and buggy showroom. The Museum is open to the general public from April through October, Thursdays through Saturdays. For more information about helping or visiting the Museum, please log onto www.buggymuseum.org or call 570-966-1355.

Buffeltaler Earns Perfect Score in the North American Versatile Hunting Dog Utility Test

Louie vom Buffeltaler, a Deutsch Drahthaar from the vom Buffeltaler Kennels, which is owned by Dwight Runkle and located in Mifflinburg, recently ran in the North American Versatile Hunting dog Utility test and scored a perfect 204 points, prize one. The test consists of field and water work including two 200 meter on land blind retrieves of furred game and two blind retrieves of feathered game on the water. The dog also has to find and point three upland game birds and than hold point until the judges give the release command. Due to his performance and score, Louie has been invited to compete in the North American Versatile Hunting dog Invitational which will be held next year in Ohio.



WANTED
Your Unwanted Vehicle
Old • New • Wrecked
Instant Cash
Toll Free
1-866-748-7042

Mae Keefer Nursing Scholarship Recipients



On Wednesday, August 15, 2012, nursing students gathered at Evangelical Community Hospital where they were awarded the honor of being chosen as Mae Keefer Nursing Scholarship recipients. The scholarship was established to honor Mae F. Keefer, RN, a long-time Director of Nursing and current Evangelical Hospital volunteer who set and maintained high standards for herself and her staff in the nursing profession.

The scholarship provides support for nursing students from Northumberland, Snyder and Union counties.

During a luncheon in their honor, the students had the opportunity to meet Mrs. Keefer as well as network with Hospital staff and other friends of the Hospital. Wendy K. Smith served as the speaker of the event. Smith received the scholarship several times in the 90s as she pursued her nursing career.

For more information about the Mae Keefer Scholarship visit www.evanhospital.com.

Chilly Willy's Donates \$1500 To PACFI, Justin's Smile



(From left) Mandy Umbel, Bob Derr, Bill Kerstetter, Tish Kerstetter. Bill Kerstetter gives PACFI's Bob Derr a check for \$1500 as a donation from the Chilly Willy's Charity Golf Tournament. Chilly Willy's also donated \$1500 to Justin's Smile.

"It's our way of giving back to the community," said Tish Kerstetter who, with her husband, Bill, owns Chilly Willy's Restaurant in Hartleton. Chilly Willy's recently donated \$1500 each to Pennsylvania Cystic Fibrosis, Inc. (PACFI) and Justin's Smile. The funds were raised through the restaurant's annual golf tournament held at Shade Mountain Golf Club.

"We appreciate Chilly Willy's support," PACFI President Betty Hollenbach said, "and most of these funds will be used to help families affected by cystic fibrosis (CF) but some will go to research projects." PACFI was founded in 1985 as an independent, nonprofit, all volunteer 501(c)(3) organization that helps families and funds research.

Justin's Smile was formed by the family and friends of Mifflinburg's Justin Lloyd who died in a car accident in 2009. The nonprofit organization provides financial assistance for funeral and related expenses due to the death of a child. Chilly Willy's also sponsors an annual whiffleball tournament to benefit the organization and the restaurant named an ice cream flavor "Justincredible" after Lloyd.

More information about PACFI is on their website at www.pacfi.org. More information about Justin's Smile can be obtained by calling Tammy Davis at 966-0236 or 713-9721 or email tdavis@dejazzd.com.

MICKEY'S & OIL BURNER SERVICES HEATING
Cleanings, Maintenance, Repairs and Installations
35+ years of experience
570.522.9997
PROMPT PROFESSIONAL SERVICE
SERVING YOUR AREA

Advertising Specialty Products
GRG
Green Ridge Graphics
skilled screen printing
East of Mifflinburg Off of Route 45
we do 4-color process printing **570-966-2621** Full Art Department

RISHEL'S MEATS
701 Walnut Street, Mifflinburg, PA
Store Hours: Mon. - Thurs. 8-5;
Fri. 8-6; Sat. 8-4
Phone - 966-0611 Ken Rishel, Owner
STOP & SEE US AT THE MIDDLEBURG AUCTION ON TUESDAYS AND THE LEWISBURG MARKET ON WEDNESDAYS!
EVERYDAY LOW PRICES!!
Delmonico..... \$10.99 lb.
Boneless Pork Chops..... \$3.99 lb.
Minced Bologna..... \$3.59 lb.
Your Meat Specialists! Over 80 Years Combined Experience as Meat Cutters

Free Healthcare Lecture
Learn how to reduce healthcare cost by prevention.
Free 2 1/2 hr. Interactive Work Shop
Wed., Oct. 3rd, 2012
6:30-9:00 p.m.
Across the road from Zimmerman's Harness Shop
436 Kaiser Run Rd.
Millmont, Pa 17845
Dr. Joal Wallach has been involved in Bio-medical research for 40 years. He has written more than 70 scientific papers, as well as numerous books, including, "Dead Doctors Don't Lie." Dr. Wallach now dedicates his time lecturing on the benefits of Nutrition. (90 essential nutrients around the world.)
Speaker: **Marvin Ropp**
Lecturing with Wallach for 3 years
Topics: Cellac Disease, Arthritis, Diabetes, Birth Defects and more
Contact: **Ervin M. Martin 573-378-4447**

Grand Opening at **Esh's Variety**
FABRIC * SHOES * CLOTHING
Fabric • Footwear • Home Decor • Clothing
At the location In Mifflinburg (Mifflinburg Shopping Center)
307 East Chestnut Street
Enter Your Name For Door Prizes
(With A Purchase)
September 14 & 15
Open Friday, 9 a.m. - 8 p.m., Opening at 9 a.m.
Every \$100 You Spend You Can Enter Your Name For The GRAND PRIZE!
Grand Prize - \$200 Gift Certificate
OTHER PRIZES
1ST - \$75 Gift Certificate
2ND - \$50 Gift Certificate
3RD - \$25 Gift Certificate
Thank-You for your patience while we are going through this transition. We Look forward to serving 'our' community. God Bless You!

Keystone Housewares
Store Hours: Mon., Tues., Thurs. 8:30-6;
Wed. & Sat. 8:30-5; Fri. 8:30-8
325 East Chestnut Street, Mifflinburg • (570) 966-4100
Located at the Buffalo Valley Shopping Center, right Next to Subway.
15% off STOREWIDE ANNIVERSARY SALE
SEPTEMBER 20, 21, & 22, 2012
(15% off storewide, with one exception which is gifts cards)
This is our best sale of the year!!! DON'T MISS IT!!
15% off discount only apply to in stock items over the sale days of September 20, 21, & 22, 2012
YOUR KITCHEN SHOP!

Gold Above \$1700.00 Silver \$34 We need all your Gold and Silver, Coins and Jewelry!
REWARD OF \$2500.00
For the first banknote we purchase of the "First National Bank of Mifflinburg." *Price is for note in fine condition with no problems. Higher quality pays more, lower quality pays less. We need large size currency and are paying top prices for quality material. Regardless of the size of your collection. We can buy it all. Never clean your coins.
U.S. COLLECTORS ADVOCATES
25 N. 8th St. Lewisburg, Pa 17837
570-523-9579

Brubaker's Orchard
Apples - Red & Yellow
Delicious, Cortland, Empire
1 Bu. \$16.00
Mutsu 1 Bu. \$19.00
Apple Butter Now Available!
857 Scholl rd., Windfield, Pa 17889
837-3735
Hours: Mon.-Fri. 8-7 Sat. 8-3
ZIMMERMAN'S
We Do Deer Processing
Custom Butchering
Homemade Ring Bologna
Phone: 966-2441
Wed.-Fri. 9-5:30, Sat. 8:30-12
2 mi. East of New Berlin, On Rt. 304 & Corner of Little Mexico Rd.

Sharing God's Blessings
Customer Appreciate Sale
7 Year Anniversary
September 20, 21, & 22
Tuesday - Friday - Saturday
20% Off All In-Store Items
Daily Drawing - \$20 Gift Certificates
In-Store Surprises
Green Dot (50% Off) Bargains
Free Gift to Every Customer
Free Refreshments
Heavenly Surprises
Christian Outlet & Bookstore & More
"On the Square" Middleburg, PA • (570) 837-1837
Tuesday-Friday 10-5; Saturday Summer Hours 10-2
Parking in rear
♦ Special Ordering ♦ Church Supplies ♦ Curriculum
♦ Balloons ♦ Willow Tree ♦ Candles ♦ Country Fixins'
♦ Like Us On Facebook